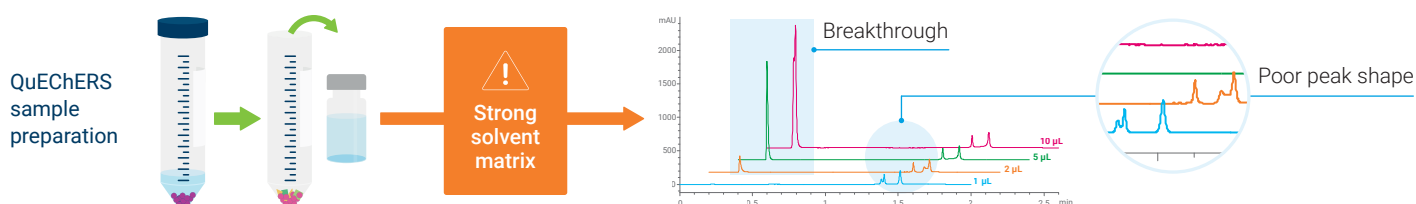


A Key Ingredient for Better Peaks

Agilent 1260 Infinity II Hybrid Multisampler

In food safety, QuEChERS simplifies sample preparation, but the strong solvents involved complicate LC and LC/MS analysis.

Agilent
InfinityLab



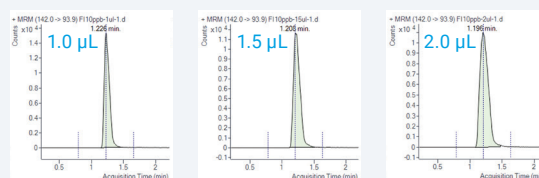
After QuEChERS sample preparation, the sample dissolved in strong solvent may cause solvent effects in HPLC, leading to peak breakthrough and poor peak shapes, especially when the injection volume increases.

Agilent 1260 Infinity II Hybrid Multisampler with Feed Injection mode

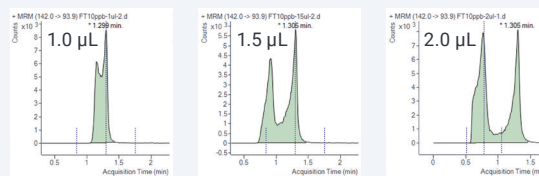
Agilent Feed Injection mediates strong solvent effects by infusing sample into the mobile phase stream—for perfect peak shapes and easy peak integration without extra sample preparation.



Agilent Feed Injection mode



Classic flow-through mode



Comparison of the polar, early-eluting pesticide methamidophos (10 ppb in acetonitrile) at different injection volumes.

Learn more about the multisampler:

www.agilent.com/chem/hybrid-multisampler

Download the application note:

Improved Peak Shape and Lower LOQs in Pesticide Analysis

www.agilent.com/chem/5994-6125EN

DE91579138

This information is subject to change without notice.

© Agilent Technologies, Inc. 2023
Published in the USA, May 17, 2023
5994-6099EN

 **Agilent**
Trusted Answers