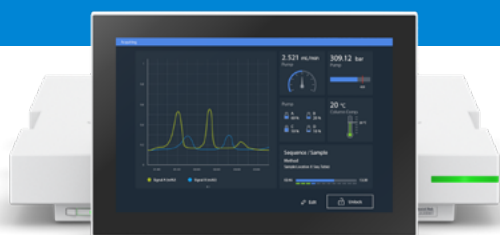


# InfinityLab Assist—Your Intelligent Lab Companion

## Agilent InfinityLab Assist upgrade G7178A



Agilent  
**InfinityLab**

### Streamline your workflow with smart automation

Save 30 minutes every day in every lab! The InfinityLab Assist takes the guesswork out of your day. From guided maintenance and real-time system insights to automated startup and purge tasks, it helps you spend less time troubleshooting and more time on science.



<b>Automated Startup and Shutdown</b>	Schedule tasks so your LC is ready when you enter the lab, and safely store columns after runs.
<b>Smart Purge</b>	Automate purge procedures for pumps and autosamplers, saving time and solvent.
<b>Guided Maintenance and Troubleshooting</b>	Step-by-step interactive guides reduce errors and minimize downtime.
<b>Real-Time System Insights</b>	Customizable dashboards and trending for data-informed decisions—accessible at the instrument, on a PC, or remotely.
<b>Remote Access</b>	Secure browser-based control from anywhere with no interference to CDS data.
<b>Enhanced Lab Productivity</b>	Save 30+ minutes daily on startup procedures. Reduce manual errors and improve confidence in analytical results.

## Compatibility and integration

- Compatible with Agilent 1260 and 1290 Infinity II and III LC systems or higher
- Full functionality of the Agilent InfinityLab Assist (G7180A) in OLCDS is supported with firmware D.07.40 or above. LC driver version 3.8 and Agilent OpenLab CDS, version 2.8 update 03 or higher
- InfinityLab Assist functions for local control, (e.g., startup and shutdown tasks, maintenance, troubleshooting, diagnostic, and instrument trends) require at least firmware D.07.40

## Installation and hardware setup

The installation can be done easily by the user. Simply stack and secure the instrument, and snap in the display. Following connection, let the Onboarding Guide walk you through the installation.

### More information

Brochure | 4.7 MB

[HPLC Made for Tomorrow](#)

User manual | 2.1 MB

[InfinityLab Assist](#)

Web

[Automate HPLC routines, Infinity III LC upgrades](#)

### Ordering information

Order center

[G7178A—InfinityLab Assist Upgrade](#)