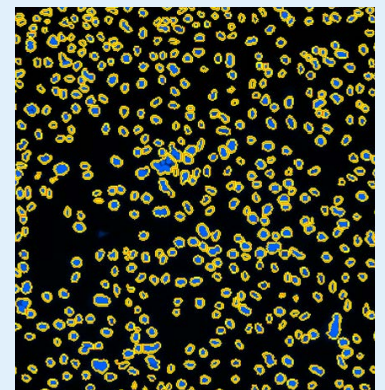


Get the best in usability and processing speed with the Agilent Seahorse XFe Controller upgrade



The Seahorse XFe Controller Upgrade is an IT-friendly system upgrade including a Windows 10 (64-bit) computer and 64-bit hardware that provides modern Windows and touchscreen technology with the same small benchtop footprint.

Benefit	NEW XFe Controller Model	Previous XFe Controller Model
Latest Windows OS	Windows 10 (64-bit) OS provides faster system responsiveness, improved file management and security.	Windows 7 (32-bit) OS, cannot be upgraded. Security & feature updates discontinued after Microsoft's "extended support" period (Jan 2020).
Power to run your longest assays	Robust computer performance via the Intel Core i5 processor and 16 GB RAM provides greater operational reliability.	XFe assays can be resource intensive; the Intel Core i3 processor and 4 GB RAM support basic assay performance. Refer to XFe Controller Best Practices to avoid performance issues.
Customizable system security	Enhanced default Windows security with Windows Defender. Supports installation of preferred anti-virus software, disk encryption and Windows Updates.	Default Windows security is Microsoft Security Essentials. Alternative antivirus software and disk encryption is not supported.
IT-friendly hardware	Built-in Wireless (802.11 b/g/n) & Ethernet Port simplify integrating the XFe Analyzer into your institutions network infrastructure.	Ethernet Port only, less flexibility for configuring network access, especially for more stringent network security requirements.



Additional Benefits:

- Better touchscreen performance
- Faster data processing and analysis in Wave
- Compatible with the Agilent Seahorse XF Imaging & Normalization system

Specifications	NEW XFe Controller	Previous XFe Controller
Operating System	Windows 10	Windows 7
Processor	Intel i5	Intel i3
Memory (RAM)	16 GB	4 GB
Hard Disk Drive	320 GB	125 GB
USB	USB 3.0 & 2.0	USB 2.0
Ethernet Port	LAN RJ45 (Gigabit)	LAN RJ45 (Gigabit)
Wireless LAN	802.11 b/g/n	None
Bluetooth	BT 4.0	None
Display Size	20-inch widescreen	18.5-inch diagonal
Resolution	1920 x 1080	1366 x 768
Touch Screen	Projected Capacitive	S.A.W.
Imaging & Normalization Ready	Yes	No
Part Number	S7807A (XFe96), S7807B (XFe24)	

Upgrade Includes: new controller computer, internal 64-bit hard drive, internal 64-bit barcode reader, installation and transfer of all instrument system data to the new controller.

Publications Database

www.agilent.com/publications-database/

Cell Reference Database

www.agilent.com/cell-reference-database/

Webinars

www.agilent.com/en-us/training-events/eseminars/seahorse-xf-technology-webinars

Find a local Agilent customer center
in your country

cellanalysis.support@agilent.com

Worldwide Technical Support

seahorse.support@agilent.com

USA and Canada

1-800-227-9770; select option 3 then 8

Europe

UK: 0500 096 7632

Germany: 0800 180 66 78

Other EU: +45 3236 9878

For Research Use Only. Not for use in diagnostic procedures.

This information is subject to change without notice.

© Agilent Technologies, Inc. 2019
Published in the USA, April 18, 2019
5994-0922EN