



SUREGUIDE™ CRISPR LIBRARIES

Catalog & Custom Libraries

Now Open for Early Access!

High Quality – Pre-Cloned Libraries

- Catalog GeCKOv2 exon targeting libraries for human and mouse
- More Guides represented (99.99%) with uniform representation

Custom Content – Any region, Any Sequence

- Fully custom content at catalog quality and prices
- Compatible with revolutionary NextGen cloning vector— SureVector™

Unleash Any CRISPR Screen

- Exome knock-out screens
- CRISPR a/i (activation and interference)
- Donor DNA libraries for knock-in screens
- Design a library for any organism, or any application

To inquire about or sign up for the Early Access Program, please go to:

www.agilent.com/genomics/CRISPREA

For Research Use Only. Not for use in diagnostic procedures.

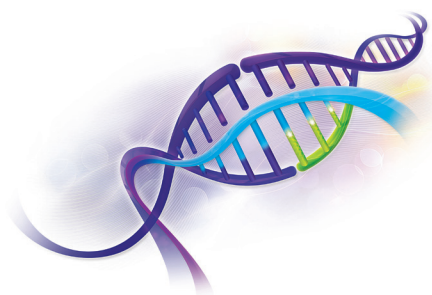


Agilent Technologies

SureGuide gRNA Libraries

	Catalog Human Exome	Custom Amplified libraries	Library Cloning Kit	Custom Libraries: Any Vector	HR Donor Libraries for Homologous Recombination
Your Input	None; pre-designed, validated set of guides	Sequences for all guides to be included in the pool, up to 65,000 guides.	Pre-amplified oligo library (intended for use with PN G7555P).	Sequences for all guide constructs to be included in the pool, up to 65,000 guides. Guide constructs should include sequences for cloning and any other features not included in the user supplied vector.	Sequences for all DNA donor constructs, up to 120,000 sequences, up to 200 nucleotides in length.
Product Configuration	Plasmid library cloned into a lentivirus vector containing a U6 promoter, GFP, and a puromycin selection marker.	50 ng of amplified DNA library, ready-to-clone. Fragments contain a U6 promoter and overlap regions compatible with Agilent's SureVector library cloning kit.	Lentivirus vector backbone (puromycin selection, GFP reporter, U6 promoter), all enzymes and buffers to generate a plasmid library.	10 pmol of unamplified oligo library. Sequences will be synthesized exactly as specified, no additional features will be added.	10 pmol of unamplified oligo library. Sequences will be synthesized exactly as specified, no additional features will be added.
Application	Guides designed by the Broad Institute to effectively target all human exons for knock-out.	Custom design of targets for use in human and mouse cells (or other cells that can use a U6 promoter). Can be used for custom knock-outs, CRISPR a/i or other CRISPR applications	Cloning of CRISPR libraries with up to 65,000 guides into the included pSGLenti vector.	Custom design for less common model organisms or for expression/delivery systems other than Agilent's lentivirus system. Can be designed for use in knock-out, knock-in or CRISPR a/i applications.	CRISPR-mediated replacement of genomic DNA sequences
Companion Products & Tools	Custom libraries containing subsets for follow-up studies	SureVector library cloning kit	Custom SureGuide CRISPR Library		Herculase II
Required/Not Provided	A Cas9 expression system (vector or virus) A viral particle packaging system	Library cloning system A Cas9 expression system (vector or virus) A viral particle packaging system	Oligo library Cloning to gRNA expression vector or adapting vector to Cas9 expressing vector Viral particle packaging system	Cloning to gRNA expression vector or adapting vector to Cas9 expressing vector Library design software	Oligo library amplification CRISPR library targeted for cutting Cas9 Method for delivering Cas9, CRISPR library and donor DNA into cells

Custom content - catalog quality
Any region, any sequence



LEARN MORE OR BUY ONLINE:

www.agilent.com/genomics/CRISPREA

or call your Agilent service representative
for a demo: **1-800-227-9770**

For Research Use Only. Not for use in diagnostic procedures.

PR7000-0175

© Agilent Technologies, Inc. 2016

Printed in USA, August 11, 2016

5991-6826EN



Agilent Technologies