

CAPTURE . ANALYZE . SHARE SEMINAR

Agilent
OpenLAB



Where can OpenLAB Take You?

COMING TO A CITY NEAR YOU!

Locations:

September 22, 2015

Manor House Banquet &
Conference Center
7440 Mason Montgomery Road
Mason, OH 45040

September 23, 2015

East Lansing Marriott at
University Place
300 M. A. C. Avenue
East Lansing, MI 48823

September 24, 2015

Hyatt House Atlanta/Cobb Galleria
3595 Cumberland Boulevard SE
Atlanta, GA 30339

Are you taking advantage of the most comprehensive end-to-end laboratory solution available?

Every analytical laboratory is powered by instrumentation but it is the software that enables you to make the most out of your instruments! Agilent's complete solution offers the manageability and control businesses demand, as well as the flexibility and technical functionality laboratories require today and in the future.

Join us for a Discussion where you will Learn:

- How a fully integrated suite can help you capture, analyze, and share data in ways that add business value
- An understanding of the importance of Data Quality and Data Management
- To discover the most comprehensive suite of solutions for your enterprise
- In a setting, comparing best practices with industry experts

All in an environment where you can network and collaborate with your peers. We will have Informatics Specialists available to answer your specific questions.

See next page for Agenda.



Register Here

[www.agilent.com/chem/
Capture_Analyze_Share_2015Tour](http://www.agilent.com/chem/Capture_Analyze_Share_2015Tour)



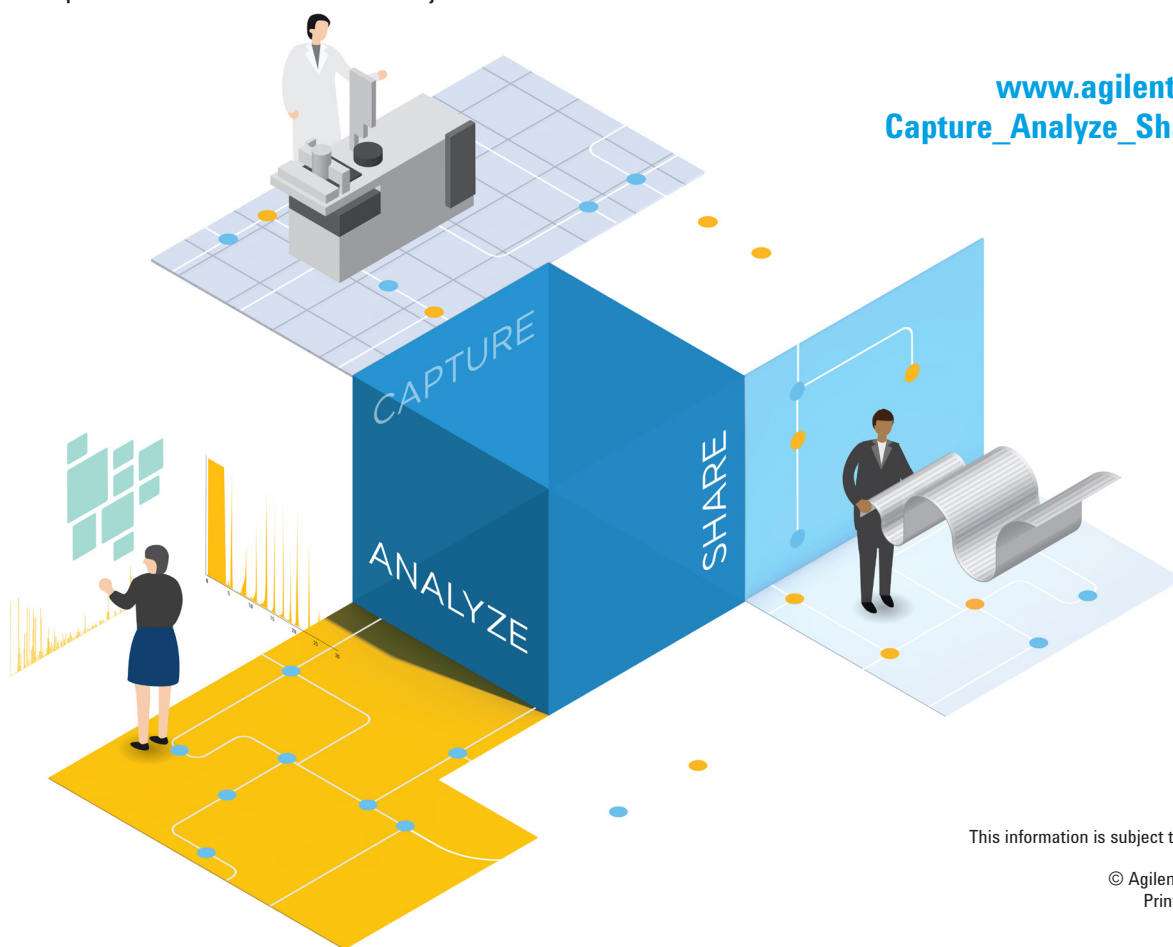
Agilent Technologies

COMPREHENSIVE AGENDA

8:30 a.m. – 9:00 a.m.	Registration and continental breakfast
9:00 a.m. – 9:45 a.m.	Why Now is the Time to Upgrade : The OpenLAB integrated suite can help you capture, analyze, and share data in ways that add business value.
9:45 a.m. – 10:30 a.m.	Data Quality and Data Management What should you be considering: Workflows for compliant and non-compliant data streams.
10:30 a.m. – 10:45 a.m.	Break
10:45 a.m. – 11:30 a.m.	Move away from Excell- Learn how others are utilizing Intelligent Report Writing
11:30 a.m. – 12 Noon	OpenLAB Managing your Critical Mass Spec Data
12 Noon – 1:00 p.m.	Lunch and Open Discussion
1:00 p.m. – 1:30 p.m.	Considering an Electronic Laboratory Notebook Solution? – The benefits of a mobile and scalable ELN Integrated in your data management environment.
1:30 p.m. – 2:00 p.m.	Final Thoughts and Discussions
2:00 p.m.	Adjourn

Register Here

[www.agilent.com/chem/
Capture_Analyze_Share_2015Tour](http://www.agilent.com/chem/Capture_Analyze_Share_2015Tour)



This information is subject to change without notice.

© Agilent Technologies, Inc. 2015
Printed in USA, August, 2015
PUB # 5991-6153ENUS
C-00057670



Agilent Technologies