

Agilent CrossLab Vial Identification Chart

with Recommended Fill Volumes

Wide Opening Screw Top Vials (9 mm)



Dimensions:	32 mm x 12 mm	32 mm x 12 mm	32 mm x 12 mm
Recommended Fill:	1.7 mL	1.3 mL	0.3 mL
Part Number:	8010-0014	8010-0018	8010-0008
Recommended Cap*:	8010-0086	8010-0086	8010-0086

Narrow Opening Screw Top Vials (8 mm)



Dimensions:	32 mm x 12 mm
Recommended Fill:	1.5 mL
Part Number:	8010-0010
Recommended Cap*:	8010-0061

Wide Opening Crimp Top Vials (11 mm)



Dimensions:	32 mm x 12 mm	32 mm x 12 mm	32 mm x 12 mm
Recommended Fill:	1.7 mL	1.3 mL	0.3 mL
Part Number:	8010-0001	8010-0004	8010-0006
Recommended Cap*:	8010-0050	8010-0050	8010-0050

Wide Opening Snap Top Vials



Dimensions:	32 mm x 12 mm
Recommended Fill:	1.5 mL
Part Number:	8010-0023
Recommended Cap*:	8010-0108

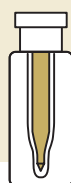


Dimensions:	32 mm x 12 mm
Recommended Fill:	1.3 mL
Part Number:	8010-0028
Recommended Cap*:	8010-0108

Micro Vials



Dimensions:	32 mm x 12 mm
Recommended Fill:	0.8 mL
Part Number:	8010-0153
Recommended Cap*:	8010-0050



Dimensions:	32 mm x 12 mm
Recommended Fill:	0.1 mL
Part Number:	8010-0154
Recommended Cap*:	8010-0050



Dimensions:	32 mm x 12 mm
Recommended Fill:	250 µL
Part Number:	8010-0155
Recommended Cap*:	8010-0050



Dimensions:	32 mm x 12 mm
Recommended Fill:	250 µL
Part Number:	8010-0158
Recommended Cap*:	8010-0050



Dimensions:	32 mm x 12 mm
Recommended Fill:	250 µL
Part Number:	8010-0160
Recommended Cap*:	8010-0050 Glass Insert



Dimensions:	32 mm x 12 mm
Recommended Fill:	250 µL
Part Number:	8010-0161
Recommended Cap*:	8010-0061



Dimensions:	32 mm x 12 mm
Recommended Fill:	250 µL
Part Number:	8010-0162
Recommended Cap*:	8010-0061 Glass Insert



Dimensions:	32 mm x 12 mm
Recommended Fill:	0.7 mL
Part Number:	8010-0159
Recommended Cap*:	8010-0050

Polypropylene Vials



Dimensions:	32 mm x 12 mm
Recommended Fill:	250 µL
Part Number:	8010-0158
Recommended Cap*:	8010-0050



Dimensions:	32 mm x 12 mm
Recommended Fill:	250 µL
Part Number:	8010-0160
Recommended Cap*:	8010-0050 Glass Insert



Dimensions:	32 mm x 12 mm
Recommended Fill:	250 µL
Part Number:	8010-0161
Recommended Cap*:	8010-0061



Dimensions:	32 mm x 12 mm
Recommended Fill:	250 µL
Part Number:	8010-0162
Recommended Cap*:	8010-0061 Glass Insert



Dimensions:	32 mm x 12 mm
Recommended Fill:	0.7 mL
Part Number:	8010-0159
Recommended Cap*:	8010-0050

Headspace Vials



Dimensions:	45 mm x 22 mm
Recommended Fill:	10 mL
Part Number:	8010-0029
Recommended Cap*:	8010-0116



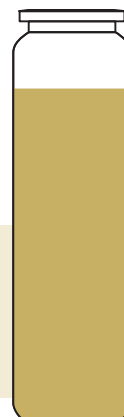
Dimensions:	45 mm x 22 mm
Recommended Fill:	10 mL
Part Number:	8010-0030
Recommended Cap*:	8010-0116



Dimensions:	75 mm x 22 mm
Recommended Fill:	20 mL
Part Number:	8010-0033
Recommended Cap*:	8010-0116



Dimensions:	75 mm x 22 mm
Recommended Fill:	20 mL
Part Number:	8010-0034
Recommended Cap*:	8010-0116



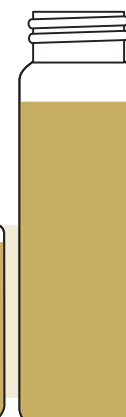
Dimensions:	75 mm x 22 mm
Recommended Fill:	20 mL
Part Number:	8010-0152
Recommended Cap*:	8010-0116



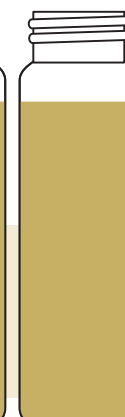
Dimensions:	45 mm x 22 mm
Recommended Fill:	10 mL
Part Number:	8010-0037
Recommended Cap*:	8010-0119



Dimensions:	45 mm x 22 mm
Recommended Fill:	10 mL
Part Number:	8010-0038
Recommended Cap*:	8010-0119



Dimensions:	75 mm x 22 mm
Recommended Fill:	20 mL
Part Number:	8010-0041
Recommended Cap*:	8010-0119

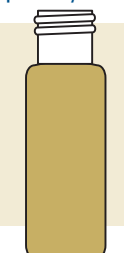


Dimensions:	75 mm x 22 mm
Recommended Fill:	20 mL
Part Number:	8010-0042
Recommended Cap*:	8010-0119

Specialty Vials



Dimensions:	37 mm x 22 mm
Recommended Fill:	6 mL
Part Number:	8010-0151
Recommended Cap*:	8010-0116



Dimensions:	45 mm x 15 mm
Recommended Fill:	4 mL
Part Number:	8010-0020
Recommended Cap*:	8010-0095



Dimensions:	37 mm x 22 mm
Recommended Fill:	6 mL
Part Number:	8010-0022
Recommended Cap*:	8010-0101

Inserts for Wide Opening Vials (11 mm & 9 mm)



Dimensions:	30 mm x 5.6 mm
Recommended Fill:	250 µL
Part Number:	8010-0131



Dimensions:	31 mm x 5.6 mm
Recommended Fill:	250 µL
Part Number:	8010-0132



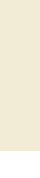
Dimensions:	31 mm x 5.6 mm
Recommended Fill:	200 µL
Part Number:	8010-0136



Dimensions:	28 mm x 4.8 mm
Recommended Fill:	150 µL
Part Number:	8010-0124



Dimensions:	31 mm x 4.8 mm
Recommended Fill:	150 µL
Part Number:	8010-0125



Dimensions:	31 mm x 4.8 mm
Recommended Fill:	150 µL
Part Number:	8010-0126

*Caps are available in a variety of colors

