



# Get on the Fast Track to Success

Agilent Pesticides & Environmental Pollutants  
MRM Database for Intuvo-GC/TQ

## Benefits

- Reliably analyze a wide array of pesticides and environmental pollutants with a Retention Time Locked MRM database with over 1,100 compounds developed specifically for the Intuvo flowpath.
- Save time, improve productivity, and halve required bench footprint using the novel Intuvo 9000 GC.
- Eliminate complex column trimming using Intuvo click and run, ferrule-free connections.
- Extend column life with the Intuvo Guard Chip and simple-to-configure backflush.

Analyzing pesticide residues in food can quickly become complex with increasing target compound and commodity lists and decreasing detection limit requirements. Having a robust method on an easy-to-use platform that integrates seamlessly to a large database is desired to facilitate this analysis. Sometimes, however, you do not have the time or capability to develop such tools—fortunately Agilent has done the work for you!

The Agilent Pesticides & Environmental Pollutants Intuvo MRM database and optimized analytical methods for the Intuvo-GC/TQ help laboratories get on the fast track to success. Start analyzing samples immediately using provided industry-standard methods and optimized MRM transitions.



For more information, visit:

[www.agilent.com/chem](http://www.agilent.com/chem)

## Intuvo-specific MRM database and RTL methods

### Optimized analytical approach, accessible to everyone

Quickly start your analysis with the P&EP Intuvo MRM Database and one of the two provided GC acquisition methods. Analysts can optimize their acquisition methods for their target compounds in a wide variety of matrices using the database, which includes up to 10 MRMs per compound.

The retention time locked GC acquisition methods precisely match retention times from column to column, instrument to instrument, and lab to lab for methods that have the same nominal parameters. The result: peaks are where you expect them. Retention time locking provides the basis for effective dynamic MRM methods.

### Intuvo—innovation with purpose

#### Designed for ease-of-use, ideal for mass spectrometry

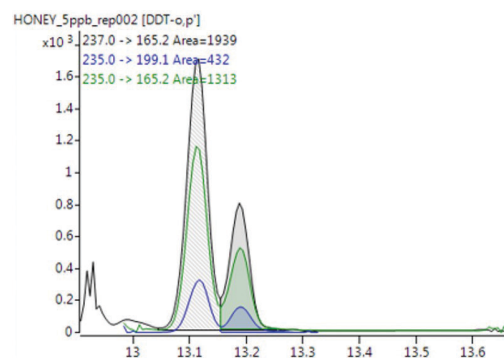
The Intuvo GC saves you time and money with technologies that make it easy to learn, simple to run, and easy to maintain.

- Simplify initial configuration, maintenance, and column changes using click and run connections.
- Protect downstream components from contamination and eliminate the need to trim the column, prolonging the lifetime of your Intuvo GC columns, with Guard Chip technology.
- Easily perform maintenance following at-instrument, graphic tutorials that walk you step-by-step through procedures.
- Increase column lifetime, reduce system cycle time, minimize MS ion source cleaning, and achieve stable baselines and retention times for target analytes using simple-to-configure backflush-based chromatography.

### Ordering information

The Pesticides & Environmental Pollutants Intuvo MRM database is included in the Pesticides Workflow kit for Intuvo/7000D:

Name	Part number
Pesticides Workflow Kit for Intuvo/7000D	G9223AA



Have confidence in your results with RTL and matrix optimized MRMs.



#### Agilent Technologies MRM Database Control Panel

Target Compound List
MRM Table
View Methods
Help
Exit

Build MRM acquisition methods with the most comprehensive MRM database.

[www.agilent.com/chem](http://www.agilent.com/chem)

This information is subject to change without notice.

© Agilent Technologies, Inc. 2018  
Published in the USA, May 4, 2018  
5991-9352EN