

# From samples to results. On time and error free.

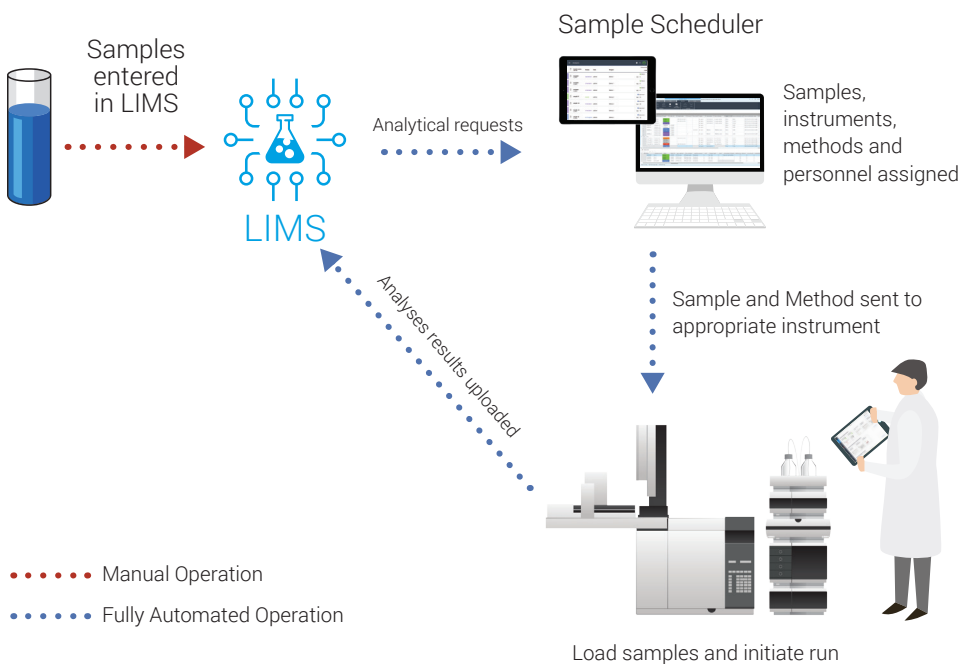
## Sample Scheduler for OpenLab

Run your entire lab using one easy to use application that integrates with your LIMS to automate common error-prone and time-consuming tasks.

- Create a faster foolproof operation with automated sample worklist assignment and scheduling
- Ensure that results contain no transcription mistakes for reliable results attribution in the LIMS.
- Produce reliable results suitable for review-free automated upload by the LIMS.
- Achieve greater accuracy with optional supervisor review using the Review & Submit function.
- Optimize your operation using both OpenLab CDS and OpenLab CDS EZChrom Edition in one lab.

Agilent  
**OpenLab**

Sample information is entered into the LIMS. Analytical requests are created by LIMS and sent to Sample Scheduler. Sample Scheduler assigns sample to a specific technician and instrument with the appropriate method. Sample information and methods are sent to the appropriate instrument. The analyst reviews assignments in Sample Scheduler loads samples and initiates run. Results can be either automatically entered in the LIMS or a manager can review the results before submitting to LIMS.



Sample Scheduler for OpenLab automates the inefficient error-prone steps in your operation, ensuring that the right sample is run on the right instrument using the right methods. Senior staff will appreciate the full lab overview from a desktop or mobile device. Analysts will love the elimination of tedious, redundant data-entry steps and the complete view of their daily workload.

## Benefits for lab managers and analysts

- Optimize lab operations from anywhere.
  - Review your entire lab's sample queue and investigate the status of every instrument from a mobile device or desktop PC.
  - Get the fastest possible turnaround time by scheduling priority samples on the next available instrument.
  - Quickly identify and correct instrument issues using clear visual notifications.
  - Onboard new operators and technicians quickly.
- Improve quality.
  - Eliminate errors due to mistakes in manual data entry.
  - Ensure that results are reliably assigned to the correct sample in your LIMS by automating result entry.
  - Be confident that high quality results are transferred to your LIMS by using the optional Review & Submit function.

## Benefits for operators and technicians

- View personal workload at a glance.
- Manage and submit samples from a simple interface on a desktop or mobile device.
- Review instrument and sample tray assignments from a mobile device and initiate the run from the same mobile device, all while standing in front of the instrument.
- Quickly identify and fix errors using clear visual notifications.

Learn more

[www.agilent.com/chem/sample-scheduler-for-openlab](http://www.agilent.com/chem/sample-scheduler-for-openlab)

This information is subject to change without notice.

© Agilent Technologies, Inc. 2018  
Published in the USA, April 25, 2018  
5991-8028EN

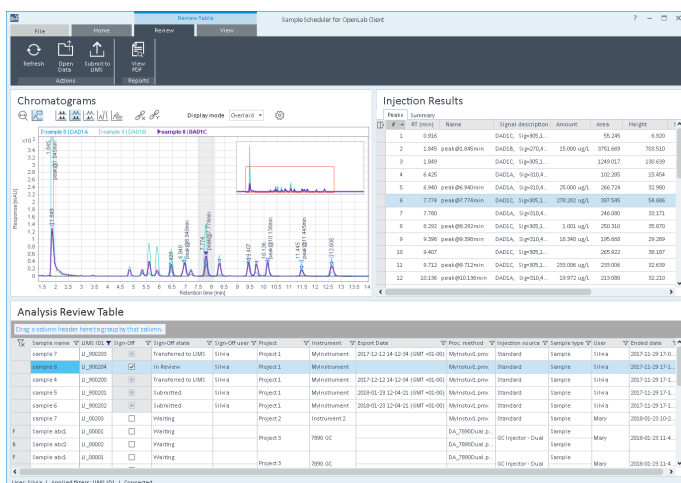


Figure 2. Review results of completed analyses and submit to LIMS if appropriate. Or if needed, open a full interactive OpenLab data analysis session to address processing mistakes (only available on Desktop PC).

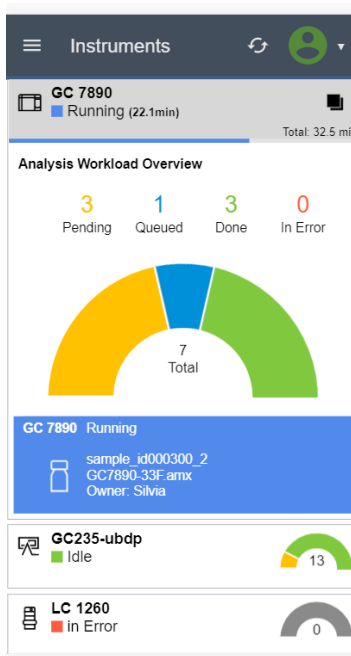


Figure 3. Using a mobile device, review the instrument state and details on how many samples are assigned to each. Click an instrument tile to reveal more, such as name of the running sample, the acquisition method, and the current user in charge of the analysis.