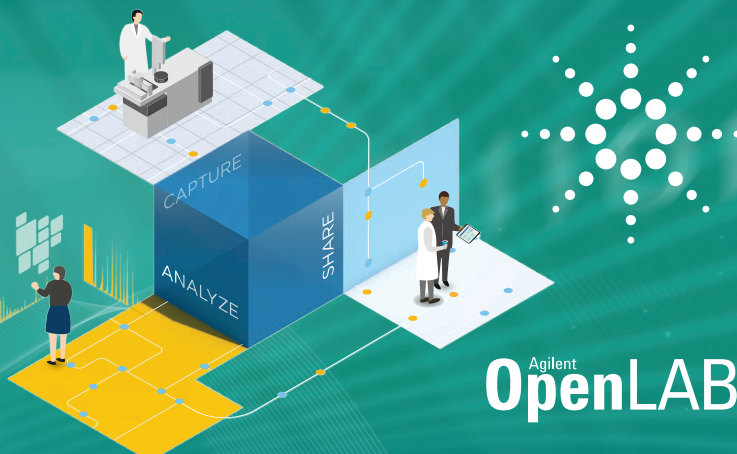


# START BUILDING A MORE SECURE AND CONNECTED LAB



## Agilent OpenLAB Enterprise Content Manager (ECM)

Take control of your data—and your success—with OpenLAB ECM. Simply put, OpenLAB ECM allows you to collect data from any location, maintain data integrity, and manage your data without disrupting your lab workflow. So you can meet today's data traceability requirements, and present your results in the best possible light.

### Data integrity: the reliable lab

Benefit	Features
The right information to the right people	<ul style="list-style-type: none"><li>• Full access control at the system and content structure levels</li></ul>
Adapts to any data management deployment strategy	<ul style="list-style-type: none"><li>• Supports local and distributed repository configurations</li><li>• Flexible user management (locally or via AD) with configurable access control settings</li></ul>
Full lifecycle event tracking	<ul style="list-style-type: none"><li>• Archived data is accessible via the central repository</li><li>• Full traceability between metadata and stored files</li><li>• Revision control and activity log history at record and system levels</li></ul>

## Data management: the connected lab

Benefit	Features
Easy collaboration with internal/external partners	<ul style="list-style-type: none"><li>• Flexible, logical organization of information</li><li>• Global access</li><li>• Automated notifications</li><li>• Hyperlinks to related files</li><li>• Review/approval workflow</li></ul>
Information at your fingertips	<ul style="list-style-type: none"><li>• Robust metadata management with filter library</li><li>• Simple, intuitive content organization/navigation</li></ul>
Quickly review files from common chromatographic data systems	<ul style="list-style-type: none"><li>• Central location</li><li>• Technology-neutral file viewer: no dedicated software needed</li></ul>
Regain full access to data details in the software of origin even when files have been converted or compressed for long term storage.	<ul style="list-style-type: none"><li>• On-demand restoration of data files to native format for common data sources</li></ul>
Robust search results	<ul style="list-style-type: none"><li>• Scalable metadata and content search</li></ul>
Store/manage data from any source in any format	<ul style="list-style-type: none"><li>• Multiple content upload mechanisms:<ul style="list-style-type: none"><li>– Direct API connections</li><li>– Scheduler</li><li>– Print service</li><li>– Send-to</li><li>– Desktop integration</li></ul></li><li>• View scientific data via the ECM user interface (technology-neutral viewer)</li></ul>
Efficient, reliable management (or processing) of work assignments and data	<ul style="list-style-type: none"><li>• Automated, conditional work assignment using the optional Business Process Manager</li></ul>
Automatically secure and centralize your data	<ul style="list-style-type: none"><li>• OpenLAB ECM Scheduler fully automates content upload in the background</li><li>• Built-in configuration enables automated content archiving</li></ul>

Learn more at [www.agilent.com/chem/openlab](http://www.agilent.com/chem/openlab)

Research Use Only. Not for use in diagnostic procedures.  
Information, descriptions and specifications in this publication are subject to change without notice.

© Agilent Technologies, Inc. 2016  
Published in USA, December 16, 2016  
5991-7727EN

