

FOCUSED DATA

THE END OF TRIAL-AND-ERROR ELECTROPHORESIS

Agilent 2100 Bioanalyzer System for Genome Editing Analysis

The Agilent 2100 Bioanalyzer system provides:

High resolution and quality data

Get more accurate and precise data than from traditional slab gels. Distinct separation of bands brings your data into better focus, giving you ultimate confidence in your results.

More time to focus on your analysis

Automated electrophoresis, with predefined assays and standardized kits, provides objective digital data for convenient analysis, archiving, and storage.

Extreme versatility

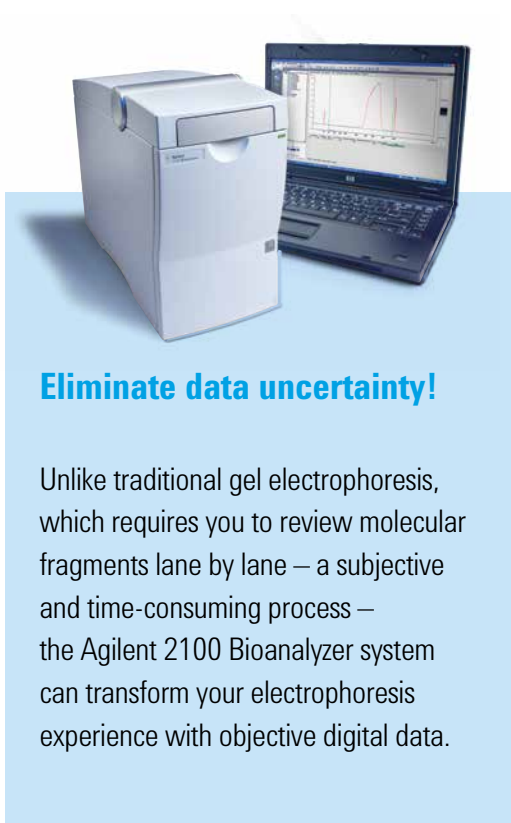
Use the system appropriate for multiple synthetic biology steps and downstream experiments, including genome editing, vector assembly, and functional studies.

An established track record

Cited over 33,000 times in peer-reviewed articles, the 2100 Bioanalyzer system has proved itself in numerous applications, including—including next-generation sequencing, gene expression, and biopharmaceutical research.

Learn more at www.agilent.com/chem/focused-data

Or contact your Agilent sales representative at agilent.com/genomics/contactus



Eliminate data uncertainty!

Unlike traditional gel electrophoresis, which requires you to review molecular fragments lane by lane — a subjective and time-consuming process — the Agilent 2100 Bioanalyzer system can transform your electrophoresis experience with objective digital data.

For Research Use Only.
Not for use in diagnostic procedures.

© Agilent Technologies, Inc. 2016
Published in USA, September 1, 2016
5991-7068EN



Agilent Technologies