

**THE FUTURE IS HERE,
AND WE DESIGNED IT
FOR YOUR LAB.**



Agilent OpenLAB Chromatography Data System

CAPTURE, ANALYZE, AND SHARE DATA QUICKLY AND CONFIDENTLY

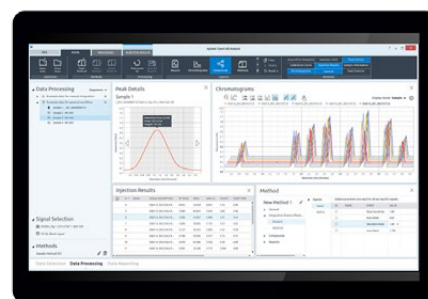
As the manufacturer of best-in-class LC instruments, and the leading provider of GC instruments for more than 30 years, we understand what it takes to maintain successful operations in chemical and petrochemical labs. And we recognize the challenges you face: Staffing. Budget management. The pressure to deliver more (and more accurate) results in less time.

When the time is right, think OpenLAB CDS

With all that in mind, we've created the newest edition of our chromatography data system (CDS)—software you can count on to get the most out of your Agilent analytical instruments, and foster productive operations for years to come.

One lab, one software system—with access to and control of the instruments most commonly used in a production environment, including Agilent and third-party chromatographs as well as Agilent single-quadrupole mass spectrometers.

Eliminate errors. Improve speed-to-results. OpenLAB CDS provides results directly in data analysis without the need to generate a full report. Key data stays within the system—eliminating errors caused by data export. OpenLAB CDS quickly captures artifacts such as missing or additional peaks, and our Peak Explorer tool presents a simple, visual view of outliers—all so you can garner insights from your results faster than ever.



Easy to learn, easy to use

Our software's intuitive, groundbreaking interface shows you only the controls you need, while our on-demand learning tools minimize training time and costs.

Learn more:

[www.agilent.com/chem/
openlabcds-the-future-is-here](http://www.agilent.com/chem/openlabcds-the-future-is-here)

Advanced software, designed with your lab in mind

Save time by centralizing operations in a client/server environment—you will be able to quickly check instrument status, see what samples are being run, and share information throughout the lab and around the world.

Simplify integration and increase certainty with our patented manual integration wheel, which presents only the most appropriate functions.

Focus on the science, not the I.T., and view your work in the context of the sample, instead of the instrument—confident that data backup and security are handled properly and automatically.

Streamline migration

Minimal downtime. Lower costs. We can make your transition from ChemStation or EZChrom easier than you ever imagined. Our experienced team will work with you to implement this enhanced workflow with as little downtime or disruption as possible, and uphold customer service levels during any transition.

Three powerful elements that set Agilent OpenLAB CDS apart

1	PEAK EXPLORER Accelerate data processing	State-of-the-art data analysis accelerates processing and review of large data sets so you can identify artifacts instantly within thousands of peaks and compounds, and quickly integrate peaks with a single click.
2	REPORTING Focus on what's important	Now you can gather and present key data in an easy-to-read package. Templates, intuitive drag-and-drop report creation, and extensive custom calculation capabilities make generating even complex reports faster and easier.
3	USER EXPERIENCE Improve the learning curve	An innovative and consistent user interface makes it easy for new users to get up to speed quickly and learn as they go. Interactive on-demand tutorials guide them through each step of a specific task or process.

Learn more:

www.agilent.com/chem/openlabcds-the-future-is-here

Find an Agilent customer center in your country:

www.agilent.com/chem/contactus

Information, descriptions and specifications in this publication are subject to change without notice.

© Agilent Technologies, Inc. 2016
Published in USA, April 20, 2016
5991-6800EN

