

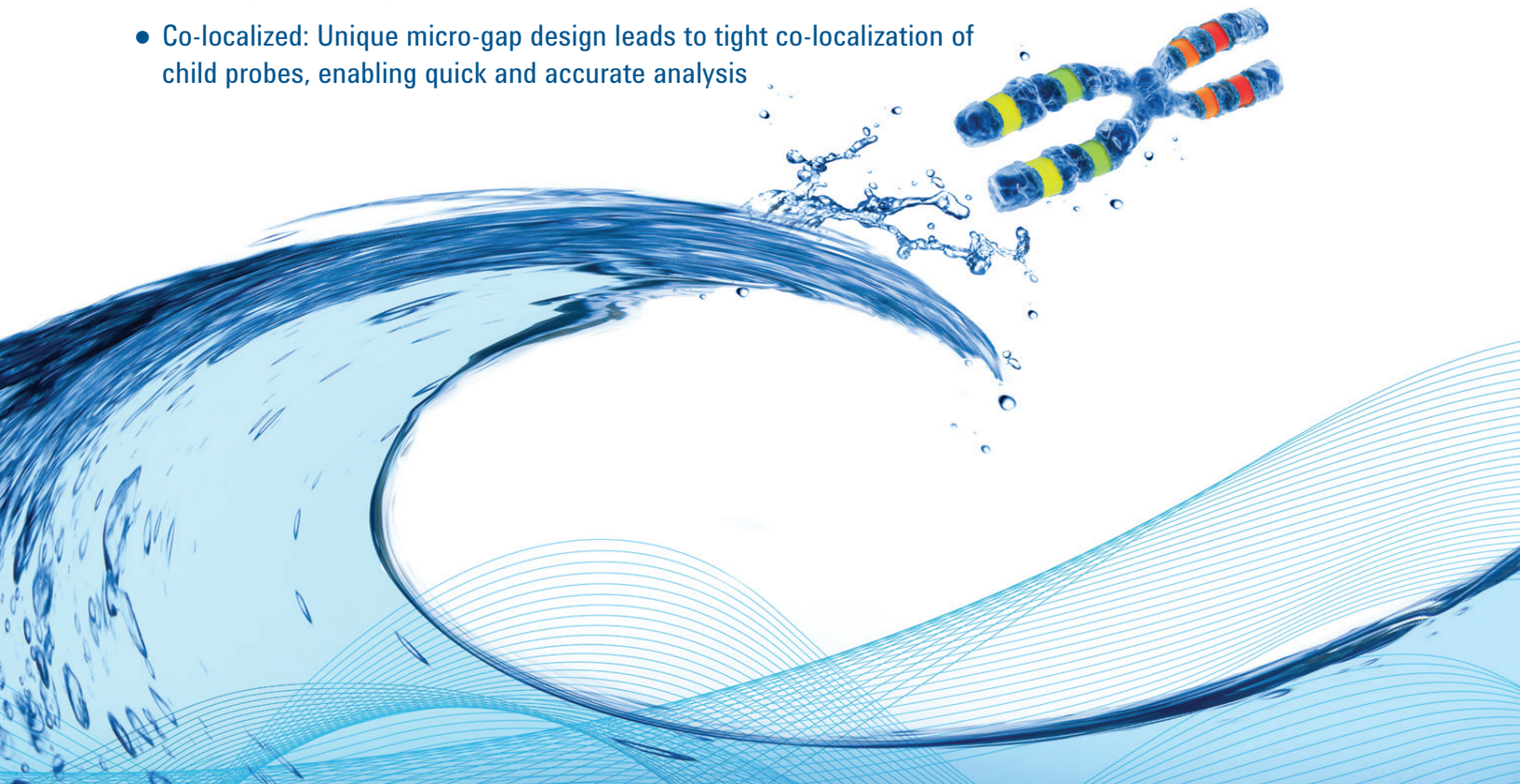


SureFISH

ALK, ROS1 and RET Break-Apart Probes

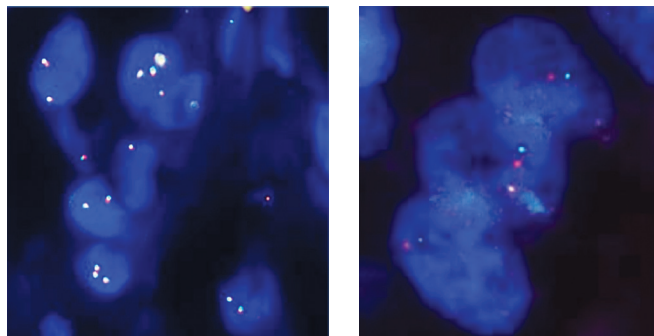
Powered by Agilent's oligo synthesis technology, these translocation FISH probes offer brighter, more balanced, co-localized signals with lower background compared to BAC FISH probes.

- **Brightness:** New oligo design algorithm and labeling chemistry enable brighter probes – compared to competing BAC FISH probes
- **Background:** Oligo FISH probes target regions that are repeat free, enabling low background and minimal cross hybridization
- **Balance:** Oligo FISH technology provides total flexibility on size of targeted region and number of oligos, enabling optimal signal balance between child probes
- **Co-localized:** Unique micro-gap design leads to tight co-localization of child probes, enabling quick and accurate analysis



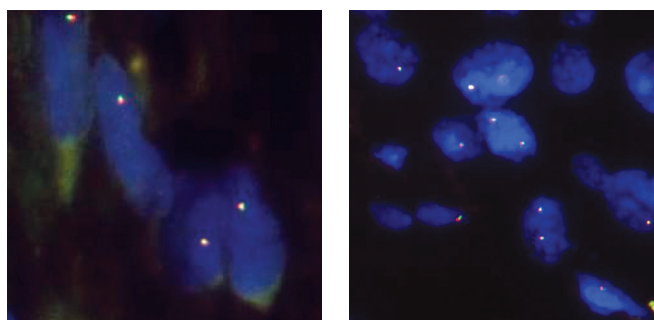
Analysis of Samples*

SureFISH ALK probe signal in two samples



ALK probe for both samples visualized on an epi-fluorescent microscope. (Left) Image of an FFPE sample showing co-localization of the red and green signals, consistent with an intact ALK gene (no rearrangement). (Right) Image of an FFPE sample showing a distinct green and a distinct red foci, indicating a rearrangement involving the ALK gene.

SureFISH ROS1 and RET probe signal on FFPE samples



FFPE samples showing co-localization of the red and green signals. The bright signal and low background allow for the easy evaluation of the probe signal pattern. (Left) ROS1 translocation probe. Image showing co-localization of the red and green signals consistent with an intact ROS1 gene. (Right) RET translocation probe. Image showing co-localization of the red and green signals consistent with an intact RET gene.

* Custom probe, not commercially available

Ordering Information

SureFISH Probes

Description	Kit Size	Catalog ID
SureFISH ALK BA	5µL	G111200-08
	20µL	G111400-08
	20µL; 6 vials	G211400-08
SureFISH ROS1 BA	5µL	G111201-08
	20µL	G111401-08
	20µL; 6 vials	G211401-08
SureFISH RET BA	5µL	G111202-08
	20µL	G111402-08
	20µL; 6 vials	G211402-08

Ancillary Reagents

Description	Kit Size	Catalog ID
IQFISH FFPE Hybridization Buffer	200µL	G9415A
	200µL; 6 vials	G9416A
DAKO Histology FISH Accessory Kit	20 reactions	K5799

For Additional Information on SureFISH Probes:

Contact your Agilent Sales Representative
Or go to www.agilent.com/genomics/surefish



For Research Use Only. Not for use in diagnostic procedures.

This information is subject to change without notice.
Part Number 5991-3574ENN
December 19, 2013

