

Now available in more than TEN phases – plus HILIC!

Achieve true **high-definition** separations without sacrificing stability



ZORBAX RRHD Column Specifications

Bonded Phase	Pore Size	Surface Area	pH Range	End-capped
ZORBAX Eclipse Plus C18	95Å	160 m ² /g	2.0-9.0	Yes
ZORBAX Eclipse Plus C8	95Å	160 m ² /g	2.0-9.0	Yes
ZORBAX Eclipse Plus Phenyl-Hexyl	95Å	160 m ² /g	2.0-9.0	Yes
ZORBAX Eclipse XDB-C18	80Å	180 m ² /g	2.0-9.0	Yes
ZORBAX Extend-C18	80Å	180 m ² /g	2.0-11.5* [†]	Yes
ZORBAX StableBond SB-C18	80Å	180 m ² /g	1.0-8.0*	No
ZORBAX StableBond SB-C8	80Å	180 m ² /g	1.0-8.0*	No
ZORBAX StableBond SB-Phenyl	80Å	180 m ² /g	1.0-8.0*	No
ZORBAX StableBond SB-CN	80Å	180 m ² /g	1.0-8.0*	No
ZORBAX StableBond SB-Aq	80Å	180 m ² /g	1.0-8.0*	No
ZORBAX Eclipse PAH	95Å	160 m ² /g	2.0-8.0	No
ZORBAX HILIC Plus	95Å	160 m ² /g	0.0-8.0	No
ZORBAX StableBond 300SB-C18	300Å	45 m²/g	1.0-8.0*	No

*StableBond columns are designed for optimal use at low pH. At pH >6, highest column stability for all silica based columns is obtained by operating at temperatures <40° C and using lower buffer concentrations – 10-20 mM or organic buffers. 300SB-C18 may be used up to 90° C. For pH 6-8, select the Eclipse Plus C18 column.

[†]Temperature limits are 60° C up to pH 8, 40° C from pH 8-11.5.

Agilent ZORBAX Rapid Resolution High Definition (RRHD) Columns

Agilent's ZORBAX Rapid Resolution High Definition (RRHD) columns take our popular ZORBAX 1.8 µm column line to the next level with a superior packing process, making them ideal for fast or high-resolution separations.

What's more, ZORBAX RRHD columns increase your productivity with:

- **Infinitely greater flexibility** that allows you to push flow rates to the limit without compromising the efficiency or quality of your separations.
- **1.8 µm particles** that deliver maximum resolution, ensuring the most defined separations and scalability to 3.5 µm or 5 µm particles for easy method transfer.
- **Stability up to 1200 bar**, for ultimate compatibility with UHPLC instruments – including the Agilent 1290 Infinity LC.
- **Superior Peak Shape.** Use ZORBAX Eclipse Plus with a wide range of analytes to achieve the exceptionally symmetrical peaks that deliver truly reliable results.
- **Enhanced stability at low pH.** Use ZORBAX SB-C18 for different selectivity and enhanced stability at pH 1-2.
- **More reliable compound identification** due to high definition chromatograms and 2.1 mm ID columns that enhance MS.
- **A large family of bonded phases** – aligned with Agilent's popular ZORBAX and Poroshell 120 families, for ensured scalability and method transfer. **Check out ZORBAX RRHD 300Å SB-C18 for intact proteins and peptides!**

Analyze more complex separations faster.

Learn more at www.agilent.com/chem/RRHD



Agilent 1290 Infinity LC

The Measure of Confidence



Agilent Technologies

Infinitely better compatibility with any LC

ZORBAX RRHD columns are now available in more than ten bonded phases, plus HILIC, for the ultimate flexibility in fine-tuning your selectivity to meet the needs of your analysis. Eclipse Plus C18 is a good place to start for most applications, offering high performance and excellent peak shapes with acids, bases and neutrals over the pH range 2-9. Many separations are optimized with bonded phase choices other than C18; the ZORBAX RRHD columns include Phenyl, PAH and Cyano options for these separations. The HILIC column is ideal for small, polar analytes by LC/MS. In addition to these choices, we have a range of popular ZORBAX phases. You will achieve the same selectivity using ZORBAX RRHD columns as you would on ZORBAX Rapid Resolution High Throughput (RRHT, 1.8 μ m), Rapid Resolution 3.5 μ m and 5 μ m columns with the same bonded phase, so you are assured of method scalability.

To learn more, go to:

www.agilent.com/chem/RRHD

Contact your local Agilent Representative or Agilent Authorized Distributor at

www.agilent.com/chem/wheretobuy

ZORBAX Rapid Resolution High Definition (RRHD) Columns for High Pressure Use (Maximum Pressure: 1200 bar)

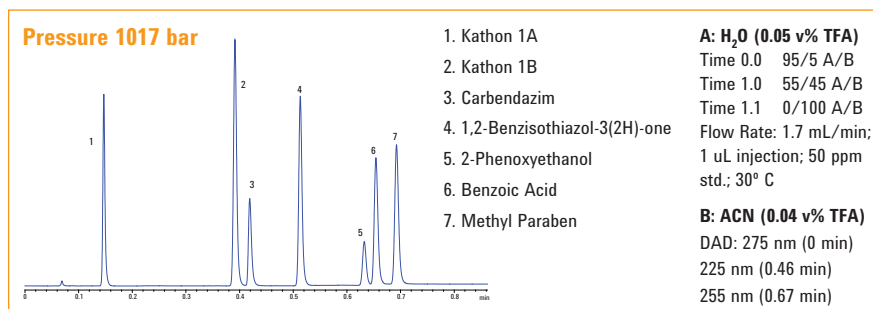
	Eclipse Plus C18 (USP L1)	Eclipse Plus C8 (USP L7)	Eclipse XDB-C18 (USP L1)	Extend-C18 (USP L1)
RRHD 2.1 x 150 mm, 1.8 μ m	959759-902	959759-906	981759-902	759700-902
RRHD 2.1 x 100 mm, 1.8 μ m	959758-902	959758-906	981758-902	758700-902
RRHD 2.1 x 50 mm, 1.8 μ m	959757-902	959757-906	981757-902	757700-902
RRHD 3.0 x 150 mm, 1.8 μ m	959759-302	959759-306	981759-302	
RRHD 3.0 x 100 mm, 1.8 μ m	959758-302	959758-306	981758-302	758700-302
RRHD 3.0 x 50 mm, 1.8 μ m	959757-302	959757-306	981757-302	757700-302

	StableBond SB-C18 (USP L1)	StableBond SB-C8 (USP L7)	StableBond SB-Phenyl (USP L11)	StableBond SB-CN (USP L10)
RRHD 2.1 x 150 mm, 1.8 μ m	859700-902	859700-906	859700-912	859700-905
RRHD 2.1 x 100 mm, 1.8 μ m	858700-902	858700-906	858700-912	858700-905
RRHD 2.1 x 50 mm, 1.8 μ m	857700-902	857700-906	857700-912	857700-905
RRHD 3.0 x 150 mm, 1.8 μ m	859700-302	859700-306		
RRHD 3.0 x 100 mm, 1.8 μ m	858700-302	858700-306	858700-312	858700-305
RRHD 3.0 x 50 mm, 1.8 μ m	857700-302	857700-306	857700-312	857700-305

	Eclipse PAH (USP L1)	StableBond SB-Aq	HILIC Plus	Eclipse Plus Phenyl-Hexyl
RRHD 2.1 x 150 mm, 1.8 μ m	959759-918	859700-914	959759-901	959759-912
RRHD 2.1 x 100 mm, 1.8 μ m	959758-918	858700-914	959758-901	959758-912
RRHD 2.1 x 50 mm, 1.8 μ m	959757-918	857700-914	959757-901	959757-912
RRHD 3.0 x 100 mm, 1.8 μ m	959758-318	858700-314	959758-301	959758-312
RRHD 3.0 x 50 mm, 1.8 μ m	959757-318	857700-314	959757-301	959757-312

	StableBond 300SB-C18
RRHD 2.1 x 100 mm, 1.8 μ m	858750-902
RRHD 2.1 x 50 mm, 1.8 μ m	857750-902

Separation of Seven Biocides in 0.7 min on a ZORBAX RRHD Eclipse Plus C18 2.1 x 50 mm, 1.8 μ m Column



This information is subject to change without notice.

© Agilent Technologies, Inc. 2011
 Printed in U.S.A., June 23, 2011
 5990-4553EN



Agilent Technologies