

# Mismatch Repair FLEX RTUs Now Available for Dako Omnis

Run MMR on Dako Omnis for significant workflow benefits and proven quality



## Agilent's high-performing mismatch repair antibodies (MMR) available as Dako Omnis FLEX RTUs

Agilent  
**Dako**

The Dako MMR FLEX RTUs for Autostainer Link 48 are well accepted in the market and show strong performance in EQA schemes. The new Dako Omnis MMR FLEX RTUs are based on the same clones and are developed for optimal performance on Dako Omnis.

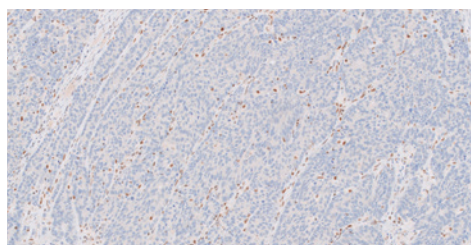
## Dako antibodies demonstrate high pass rates in EQA scheme

NordiQC performance: Dako FLEX Ready-to-Use (RTU) antibodies*			
		Pass rate using vendor recommended protocol	Number of labs using Dako RTU
MSH2, clone FE11	Run 57, 2019	100%	66
MLH1, clone ES05	Run 56, 2019	100%	35
PMS2, clone EP51	Run 53, 2018	100%	41
MSH6, clone EP49	Run 52, 2018	100%	43

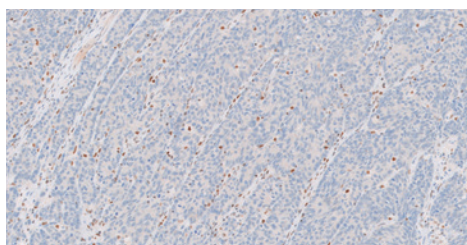
\* EQA data based on Autostainer RTU data.

### Dako Omnis MMR FLEX RTUs use double linker protocol

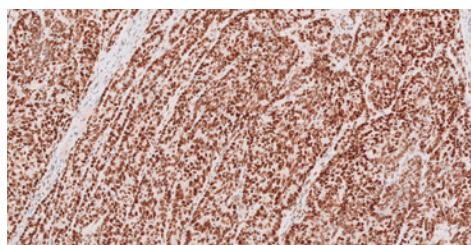
The double linker protocol uses a sequential application of rabbit linker and mouse linker, in order to secure the needed sensitivity of the assay.



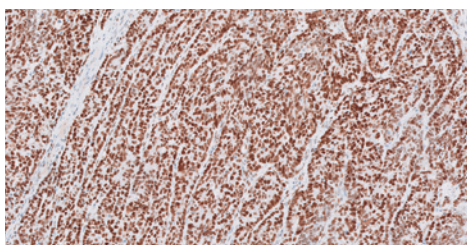
MLH1-negative colorectal cancer stained with FLEX Anti-MLH1 (Dako Omnis).



PMS2-negative colorectal cancer stained with FLEX Anti-PMS2 (Dako Omnis).



MSH2-positive colorectal cancer stained with FLEX Anti-MSH2 (Dako Omnis).



MSH6-positive colorectal cancer stained with FLEX Anti-MSH6 (Dako Omnis).

## Incorporate the MMR antibodies into your Dako Omnis workflow

The accurate and reliable FLEX RTUs enable your lab to run the required tests together as patient cases on Dako Omnis, minimizing waiting time and the need to reassemble the case, and accelerating time to diagnosis.



## Workflow benefits

The FLEX RTU concept provides a simple, efficient workflow:

- Fully calibrated antibodies that ensure easy and straightforward implementation
- Appropriate plug-and-play protocols to ensure that the antigen is correctly demonstrated in both high and low tissue expression structures
- Precise control recommendations support monitoring of staining results and efficient QC

This supports your lab in achieving reliable and reproducible diagnostic results.

## Integrated quality control

Dako Omnis is designed with a host of integrated quality control features to ensure accurate staining results:

- A double check of reagent vials helps avoid dispensing problems and ensures that the necessary volumes are dispensed onto the slides
- The Dynamic Gap Staining process provides full and even reagent coverage of the slide to deliver consistent staining slide after slide
- A temperature-controlled reagent environment maintains reagent integrity, and a stable temperature (32 °C) throughout the staining process to ensure correct performance
- Full traceability of patient cases

Ordering details			
Target	Product	Package size	Part no.
MLH1	FLEX Monoclonal Mouse Anti-Human MLH1, Clone ES05, Ready-to-Use (Dako Omnis)	12 mL, 60 tests	GA07961-2
MSH2	FLEX Monoclonal Mouse Anti-Human MSH2, Clone FE11, Ready-to-Use (Dako Omnis)	12 mL, 60 tests	GA08561-2
MSH6	FLEX Monoclonal Rabbit Anti-Human MSH6, Clone EP49, Ready-to-Use (Dako Omnis)	12 mL, 60 tests	GA08661-2
PMS2	FLEX Monoclonal Rabbit Anti-Human PMS2, Clone EP51, Ready-to-Use (Dako Omnis)	12 mL, 60 tests	GA08761-2

This information is subject to change without notice.