

Announcing Agilent OpenLAB CDS

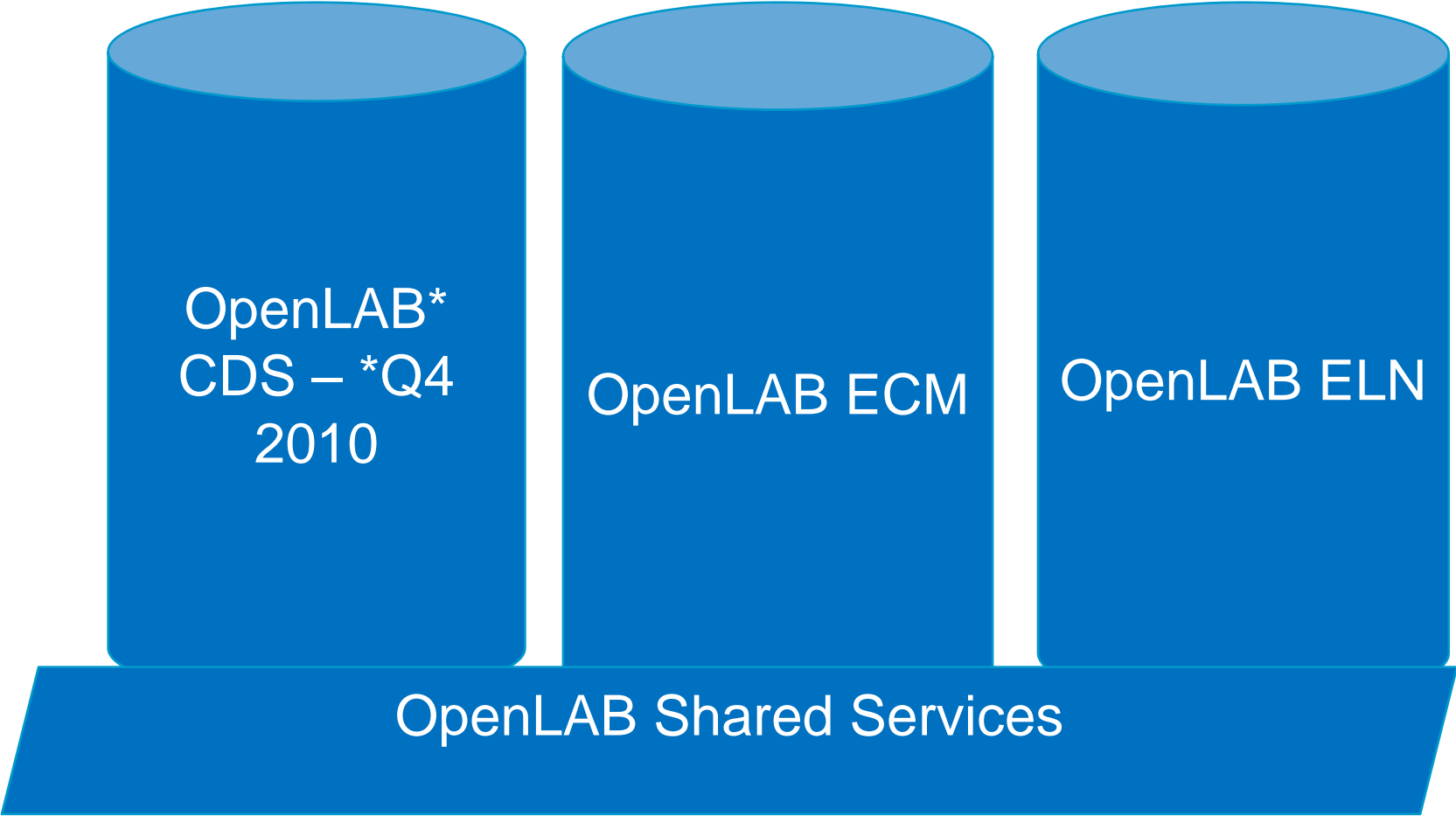
Christoph Nickel
Marketing Manager CDS
Software & Informatics Division
Agilent Technologies

April 2010

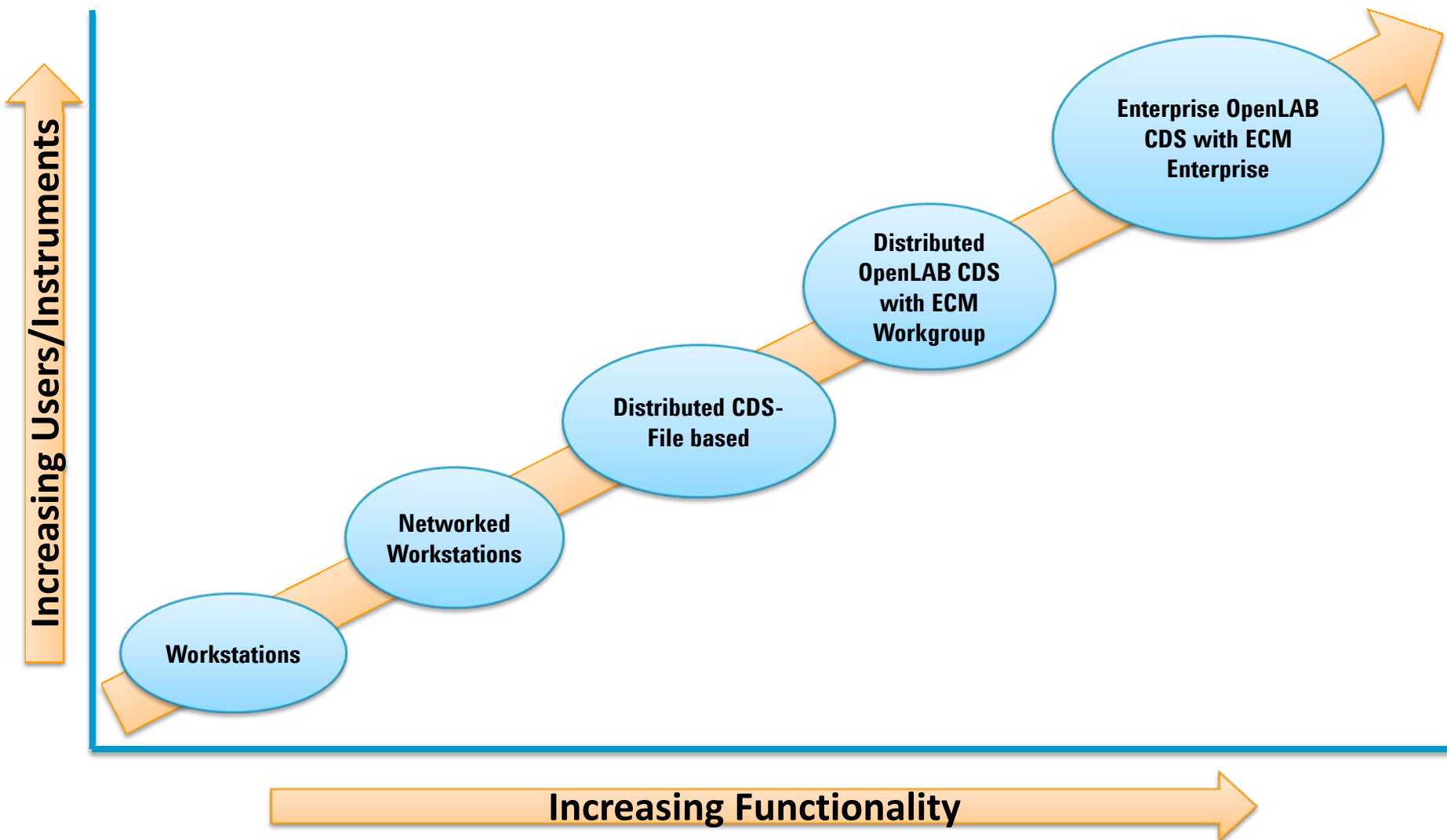


The Agilent OpenLAB Portfolio

Integrating Laboratory Informatics



OpenLAB CDS Scalability



Consolidation to single CDS – Agilent OpenLAB CDS

- At least identical features with enhanced functionality (“legacy Views”)
- Investment protection (clear future path for all platforms)
- Easy transition/non-disruptive change (simple upgrade with easy migration)
- Productivity enhancements (new: Reporting, Data Analysis, Administration)
- Compliance (ECM backend) or low-maintenance option (file based)

Agilent Roadmap

ChemStation

- Common navigation
- Common drivers
- Common infrastructure with ECM integration

Cerity-P

- Common data format (ACAML)
- Common reporting

Converged
scalable
OpenLAB
CDS

- Common data analysis

- Common automation engine

Next
generation
OpenLAB
CDS

Note: Path to OpenLAB CDS as Standard Upgrades for EZChrom/ChemStation customers, major Upgrade for Cerity customers

EZChrom/OpenLAB ICM

OpenLAB
CAPTURE • ANALYZE • SHARE

OpenLAB CDS EZChrom Edition: Benefits to EZChrom users

Merging of OpenLAB ICM and EZChrom Elite:

- Additional permissions and security for EZChrom customers
- Option to use data container file based or ECM based SSIZIP
 - Can contain data, sequence results, acq. Method, acq seq and templates

New Lab-at-a-glance view for all instruments in the lab

Easy connectivity with OpenLAB ECM as data storage and data organizer:

- Database searching and (cross-sequence) reporting
- Lab Asset management and reporting
- Additional security and versioning of container

Internal communication changes

- New Windows Communication Foundation as protocol (TCP/IP)
- No DCOM needed for Agilent Instruments
- Very Fast

Can be combined with ChemStation applications in a single system

OpenLAB CDS: Benefits to ChemStation users

Scalability and new architecture for ChemStation:

- Networked workstations (fat client – network-independent)
- Thin clients (data buffered on AICs over the network)

Central administration, central deployment

All the benefits from OpenLAB Control panel:

- User groups and roles, user administration
- Windows password authentication

New Lab-at-a-glance view for all instruments in the lab

Improved software diagnostics and troubleshooting

Improved workflow with OpenLAB ECM integration

Can be combined with EZChrom applications in a single system

OpenLAB CDS in a nutshell

OpenLAB CDS (Q4/2010): One CDS from Agilent

- New Look and feel – designed with usability in mind!
- Consolidates current CDS platforms (OpenLAB ICM/EZChrom, ChemStation, Cerity) into OpenLAB CDS
- Will be available in two flavors:
 - OpenLAB CDS EZChrom Edition and
 - OpenLAB CDS ChemStation Edition
- Uses New Shared Services Architectural Concept
- Is the next major revision of EZChrom, OpenLAB ICM and ChemStation
- Adds scalability for ChemStation (NEW!) and improves EZChrom architecture
- Designed for easy installation and easy administration
- Uses industry standards
- Is modular and fully scalable
- Will connect with OpenLAB ECM and OpenLAB ECM Intelligent Reporter

SNEAK PREVIEW

OpenLAB CDS Sneak Preview: OpenLAB Control Panel

Central point for:

Lab-at-a-glance view

Administration of users,
storage and instruments

Launching ChemStation and
EZChrom instruments

New look and feel:

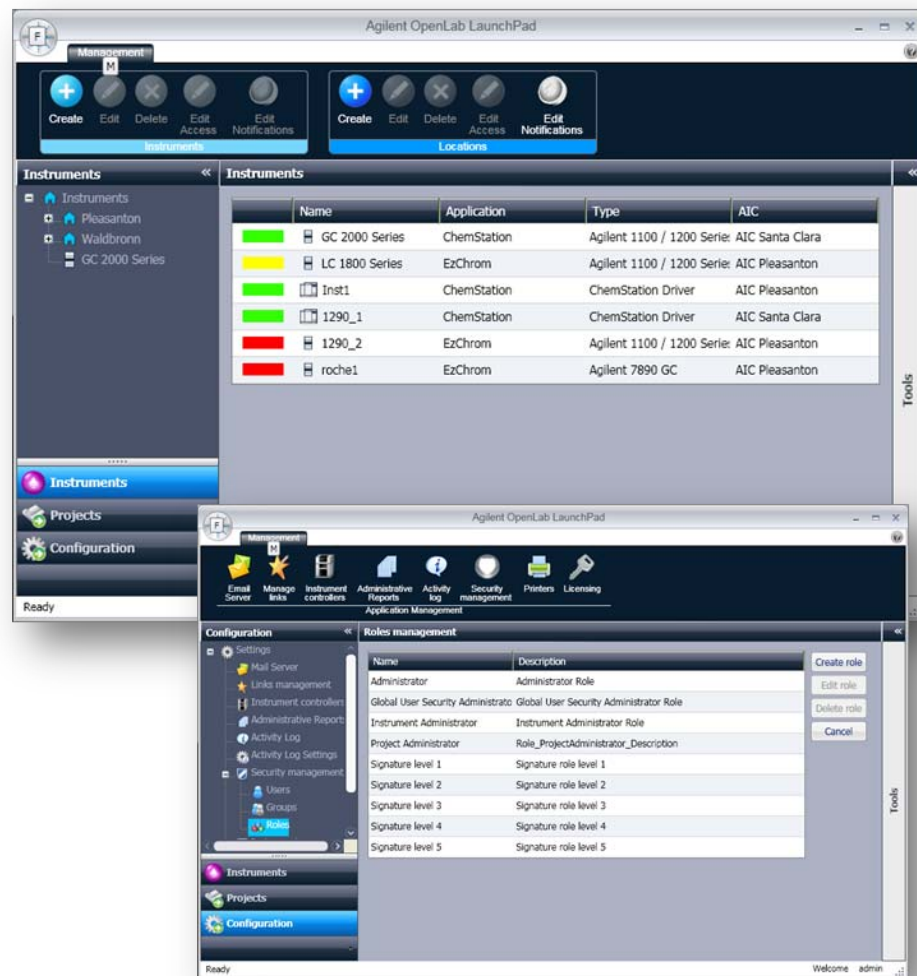
Intuitive

Easy-to-use

Distinct/differentiating

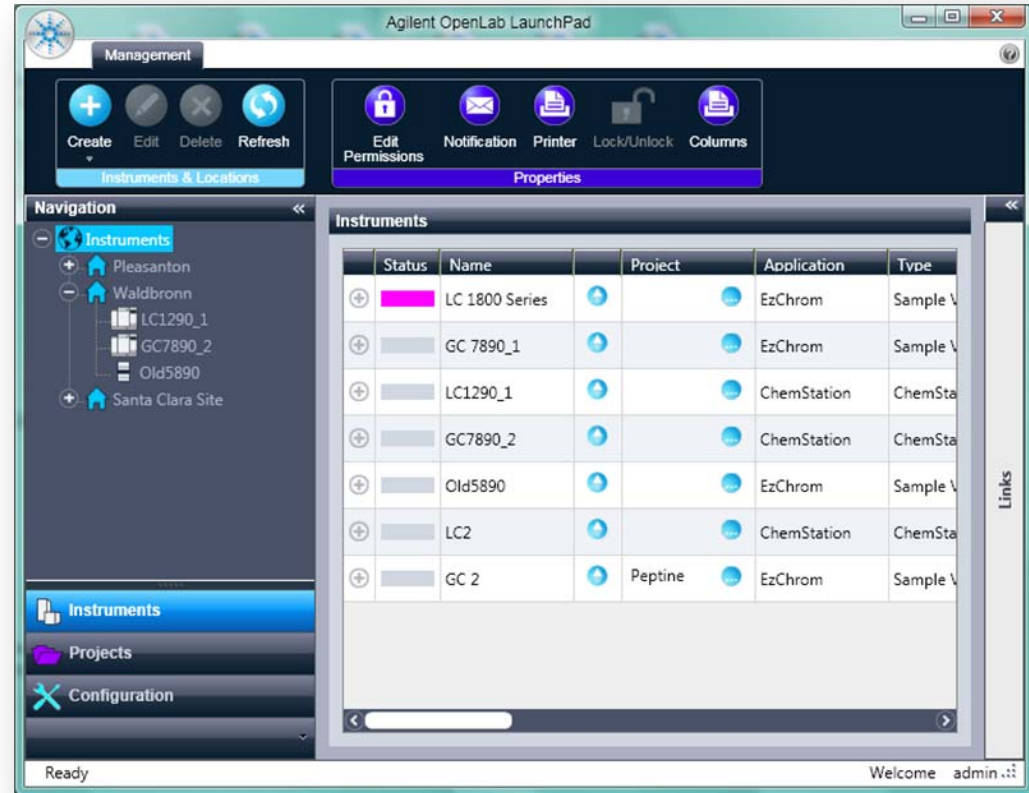
OpenLAB

CAPTURE • ANALYZE • SHARE



OpenLAB Control Panel - The New UI

- Focus on Ease of Use
- Standardized UI layout
- Using latest Microsoft Technology (.NET / WPF / WCF)
 - Will allow to go to web based applications in the future
 - WPF/CAL will allow to add other applications via plug-ins
- Same technology will be used by other Agilent products
 - Same look & feel
 - Common components reduce learning curve



OpenLAB CDS Architecture

OpenLAB CDS will be available in two configurations:

- OpenLAB CDS “ChemStation Edition”
- OpenLAB CDS “EZChrom Edition”
- Both can be mixed in a single OpenLAB CDS C/S installation e.g. for customers running both applications today separately

New ChemStation architecture based on application sharing

New EZChrom/OpenLAB ICM architecture

- Will merge EZChrom and OpenLAB ICM into one codestream
- Will use Windows communication framework to replace DCOM

OpenLAB CDS – Using (Industry) Standards

Microsoft dot.NET for Instrument Control and UI design

Microsoft CAL for easy connectivity

Microsoft Windows Presentation format for web-ready thin client applications

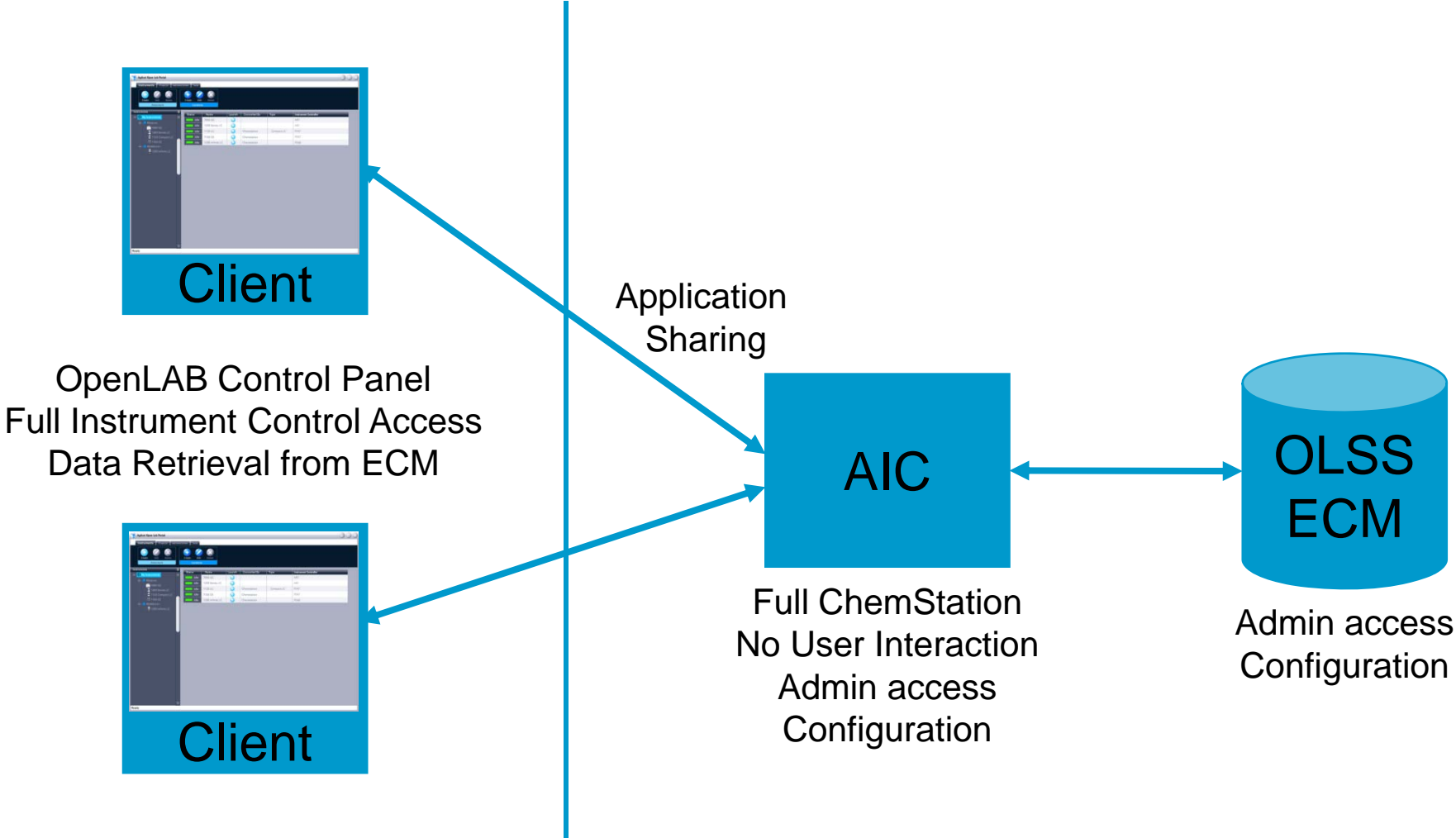
Microsoft Business Intelligence Studio for reporting

Microsoft Windows 2008 Terminal Services for app. Sharing

Citrix for central, server-based thin-client operation

Agilent Unified XML data format (ACAML) for easy data exchange

OpenLAB CDS ChemStation Edition – New architecture



OpenLAB CDS configurations - summary

Product Configuration	EZChrom Elite	ChemStation	Recommended for
CDS w/ ECM	X	X	Pharma, Chemical R&D with IT
CDS (File-based)	X	-- (will be added with next major revision)	Chemical / HPI QA with IT
Networked WS w/ ECM	X	X	Regulated Pharma
Networked WS (File-based)	X	X	Chemical/ HPI R&D needing lab-at-a-glance
Workstation w/ ECM	X	X	Regulated Pharma
Workstation	X	X	Small QA and R&D groups with no IT

Agilent OpenLAB Portfolio

Integrating Laboratory Informatics

OpenLAB, a rich integrated software portfolio, that enables you to easily capture, analyze, and share scientific data throughout the lab and across the enterprise

OpenLAB software:

- Accelerates research and development efforts
- Optimizes laboratory processes to facilitate problem solving
- Protects existing investments in laboratory software
- Provides the means to integrate disparate information systems
- Enhances existing workflows
- Secures intellectual property
- Reduces regulatory risk

OpenLAB
CAPTURE • ANALYZE • SHARE

OpenLAB CDS – integrated with Agilent OpenLAB Portfolio - Integrating Laboratory Informatics

- OpenLAB Enterprise Content Manager (ECM)
 - Is a central repository for all laboratory data with accessibility across the Enterprise
 - Interfaces to Agilent and non-Agilent data systems
 - Enables searching, management, archiving and reporting of business critical information independent of its source
- OpenLAB Electronic Lab Notebook (ELN)
 - Helps scientists to capture and manage the details from each days' experiments,
 - Secures intellectual property and improves collaboration throughout the lab or across a global enterprise
- OpenLAB Chromatography Data System (CDS)*
 - Is a highly scalable distributed data system
 - Supports ChemStation and EZChrom CDS workflows
 - Provides multi-technique, multi-vendor instrument control
- Plus: OpenLAB Shared Services to integrate the Agilent and non-Agilent applications

*Available late 2010

OpenLAB
CAPTURE • ANALYZE • SHARE

Three things to remember

Agilent CDS will converge to one data system in an evolutionary approach - embedded into the OpenLAB Informatics portfolio

CDS components will be modernized step-by-step (Instrument Control- Reporting-Administration -Data Analysis – Automation)

OpenLAB ECM will expand to scientific data management with reporting, ELN and workflow additions

OpenLAB

CAPTURE • ANALYZE • SHARE