

Agilent Firmware Update Tool, Revision - A.01.05

Download

GC Firmware Update Tool	Setup.exe 35,917 Kbytes
Help file	Update.chm 387 Kbytes

Contents

1. [Supported configurations.](#)
2. [List of firmware available with this revision.](#)
3. [Future firmware updates.](#)
4. [Common cables.](#)
5. [Enhancements](#)
6. [Defects in A.01.01 fixed in this release](#)
7. [Work-a-rounds](#)

Supported configurations

This tool uses Microsoft's .NET framework. The installer loads the framework if your PC does not already have it installed. This tool should run on the following operating systems: Windows 2000, Windows 98, Windows ME, Windows NT, and Windows XP. It is tested and supported on the following:



- Windows XP Professional, service pack 1.
- Windows 2000 Professional, service pack 4.
- Windows NT 4, service pack 6a.

The minimum version of Microsoft's Internet Explorer is version 5.01. If you need to upgrade, install version 6.0, service pack 1.

Important: Make sure you have the latest service pack and critical updates for the version of Windows that you are running. To find recent security updates, visit [Windows Update on the Microsoft website](#).

The minimum hardware requirements include:

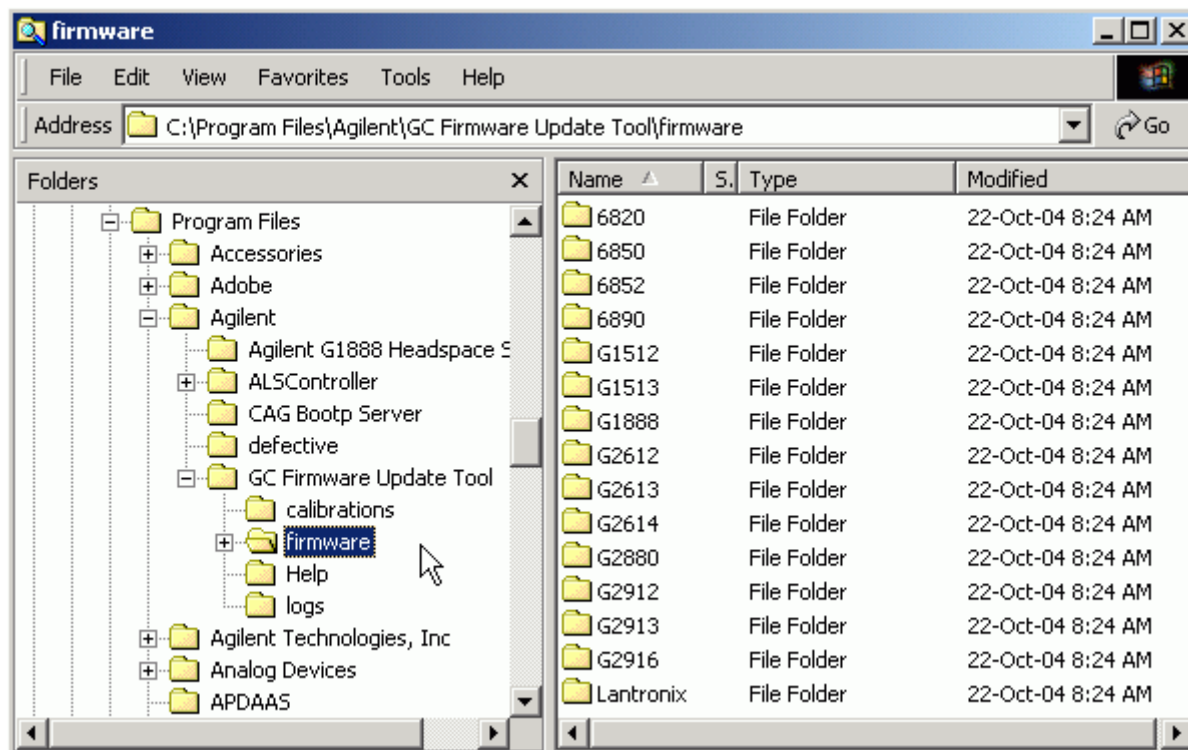
- CD-ROM drive for installation.
- LAN, USB, or RS-232 port.
- 90mhz+ Pentium and 32MB of available RAM.
- Hard drive space requirements shown in this table.

Program	Revision	Size	Last Used On
Update Utility	 Firmware Update Utility Click here for support information . To change this program or remove it from your computer, click Change or Remove.	11.5MB	2/1/2005
.NET framework	 Microsoft .NET Framework 1.1 Click here for support information . To change this program or remove it from your computer, click Change or Remove.	38.8MB	

[Back to top](#)

List of firmware available with this version

This utility installs a set of software and firmware files. The following image shows one possible location and the subdirectories for the firmware.



This version includes the following firmware.

Instrument name	Revision
6820 GC	A.01.02, A.01.03
6850 GC	A.03.02, A.03.03 A.05.03, A.05.04
6852 GC	A.02.06
6890N GC	N.05.04, N.05.05 S.01.17, S.01.18 - enables legacy mode for PE software
G1512A Controller	A.01.12
G1513A Injector	A.09.15
G1888A Headspace	A.01.01, A.01.03
G2612A Control PCA	A.02.00, A.02.01
G2613A Injector	A.10.07
G2614A Tray	A.02.01
G2880A Sampler	A.10.05
G2912A Controller	A.02.00, A.02.01
G2913A Injector	A.11.01, A.11.02
G2916A Tray	A.02.01
LAN assembly	04.7b3

[Back to top](#)

Future firmware updates

Future revisions of this update tool and future firmware updates are available from the Agilent website. Click the following link and scroll down to the firmware topic. NOTE: You must be a registered user of the Agilent site. That means you must login before you are allowed to download the firmware.

http://www.chem.agilent.com/Scripts/cag_techsupport.asp

Downloads and Utilities

Software patches, updates, and latest revision information

[Status Bulletins and Patches](#) ▪ [Firmware](#) ▪ [User Contributed Software](#) ▪ [Software Revision Tables](#)



[Back to top](#)

Common cables

This table lists some of the common cables that you might use to connect your PC to the device.

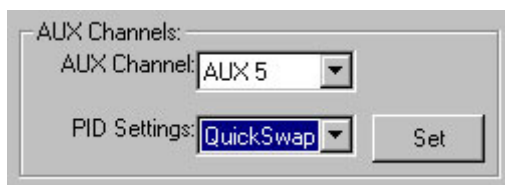
Connection type	Device	Cable
LAN	6850, 6890A, 6890Plus, 6890N	Indirectly through network 8121-0940 Directly from PC 5183-4649
RS-232	G1512A, G2912A, 6820, 6850, 6890N	Serial port: G1530-60600 USB port: 8121-1013 and G1530-60600

[Back to top](#)

Enhancements

Enhancements added in A.01.05 include:

- Ability to reinstall the factory calibration settings for G2614A and G2916A Auto-sampler trays which have a particular set of serial numbers. This feature prevents downtime caused by a critical defect in units shipped with A.02.00 firmware or units repaired and updated with A.02.00 firmware. The utility will read the serial number of the tray and prompt you for the correct action.
- Ability to optimize the way that AUX EPC modules control pressure for special devices including the Quick Swap accessory used with our Mass Selective Detector. From the device settings screen, you can select the channel of AUX EPC control and select the quick swap application.



There were no functional changes to A.01.03 or A.01.04 versions. With the A.01.02 release, we have added the following features:

- Ability to update the firmware of G1888A Network headspace sampler. Also a firmware update recovery mode.
- Date picker interface for manufacturing date.
- Oven type descriptions instead of numbers in selection list.
- Reboots GC automatically after firmware download.
- Ability to print and save a list of the setpoints of a gas chromatograph that includes model numbers, serial numbers, and the active method parameters.

--	--

Settings List		
Model: 6890		

Serial Number: US10140121		

Current Firmware: 6890N.05.04		

Attached Devices:	Model	Serial
Sampler:	G1530N.05.04	
Injectors:	G2613A.10.07	US91606820
	G2913A.11.00	0000000000
Tray:	G2614A.02.00	US14012963

Date of Manufacture:		
Day: 01		

Settings list

- Ability to update or reflash the LAN assembly in 6890N or 6850.

<p>LAN:</p> <p>Hardware Version: 04.7B3 (030204)</p> <p><input type="checkbox"/> DHCP</p> <p>IP Address:</p> <p>130 30 248 107</p> <p>Gateway:</p> <p>130 30 248 1</p> <p>Subnet Mask:</p> <p>255 255 248 0</p> <p>Update Firmware Set</p>	LAN assembly firmware update
-----------------------------------------------------------------------------------------------------------------------------------------------------------------------------------------------------------------------------------------------	------------------------------

- Ability to reset the cyro configuration of a 6850 without using the G2629A Hand-held controller.

<p>Inlet Cryo:</p> <p><input type="checkbox"/> Cryo Enabled <input type="checkbox"/> Quick Cool <input type="checkbox"/> Cryo Timeout <input type="checkbox"/> Cryo Fault</p> <p>Ambient Temp: 25 °C</p> <p>Timeout: 120.00 min</p> <p>Cryo Type: No Cryo</p> <p>Set</p>	PTV inlet cyro configuration
-----------------------------------------------------------------------------------------------------------------------------------------------------------------------------------------------------------------------------------------------------------------------------------	------------------------------

[Back to top](#)

Defects in A.01.01 fixed in the A.01.02 version

We have fixed the following defects which were present in the A.01.01 version:

- Unable to connect to 6890A or 6890Plus using RS-232.
- Unable to update 6852 due to the missing ".asc" file extension.
- Unable to update a 6890N with S.01.XX firmware.

[Back to top](#)

Work-a-rounds

- For Cambion support representatives: To make a 6852 main PCA out of a 6850 PCA, copy the 6852A.02.06.asc located in the 6852 subdirectory into the 6850 subdirectory.
- For FRCs: To make a G2912A ALS controller PCA out of a G2612A ALS controller PCA, copy the G2912A.02.00.txt located in the G2912 subfolder into the G2612 subfolder and rename the file to G2612A.02.00.txt.

[Back to top](#)