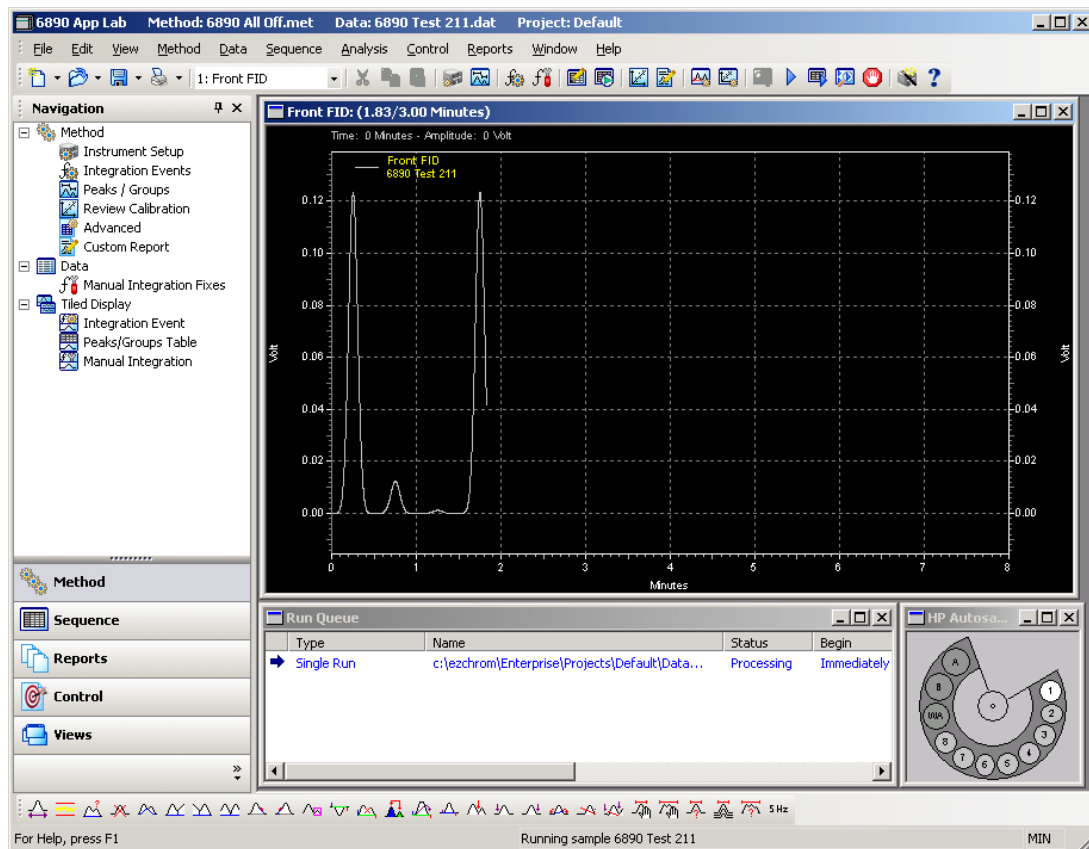


Working Smarter – How EZChrom Elite Can Help

Frank Tontala
CDS Product Manager
Software and Informatics Division
June 2007

EZChrom Elite – An Enterprise Wide Chromatography Data Solution

- Integrated Instrument Control of LCs and GCs from Dozens of Vendors
- Scalable from Single Workstation to Multi-site Client / Server
- Configurable Compliance Tools
- Highly Flexible Report Generation
- Integration with Other Lab Software

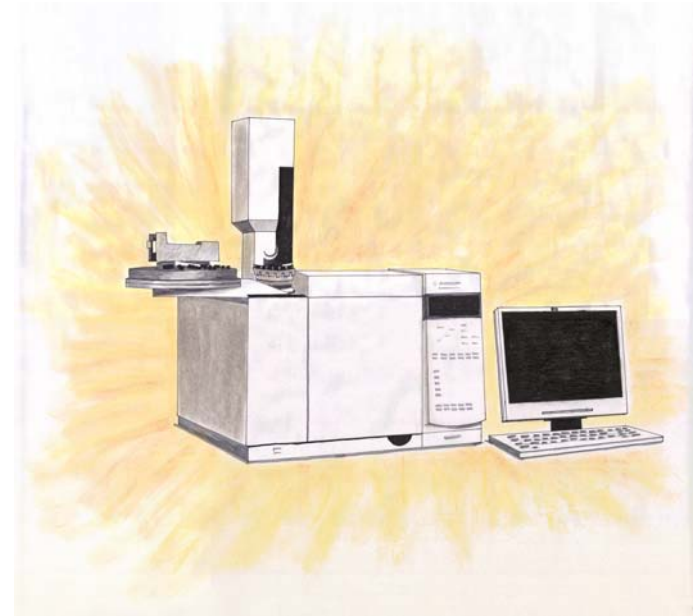


Why Should I Upgrade?



EZChrom Elite 3.2.1

- Features Full Support for the 7890 GC **using the same driver as ChemStation**
- So that means, it includes...
 - Sample Overlap
 - Microfluidics Support
 - Backflush
 - 6890 Method Translation
 - Retention Time Locking



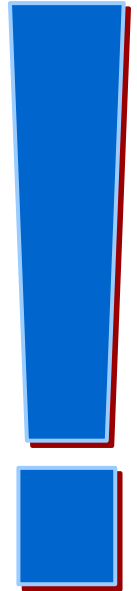
ALL the Same Functionality

EZChrom Elite 3.2.1 – HIGHLY Recommended

EZChrom Elite 3.2.1 includes support for the new Rapid Control .NET interface, which will be the architecture for all future Agilent hardware driver projects.

EZChrom Elite 3.2.1 or higher will be required for:

- 1100/1200 LC Refresh Project
- 68xx GC Refresh Project

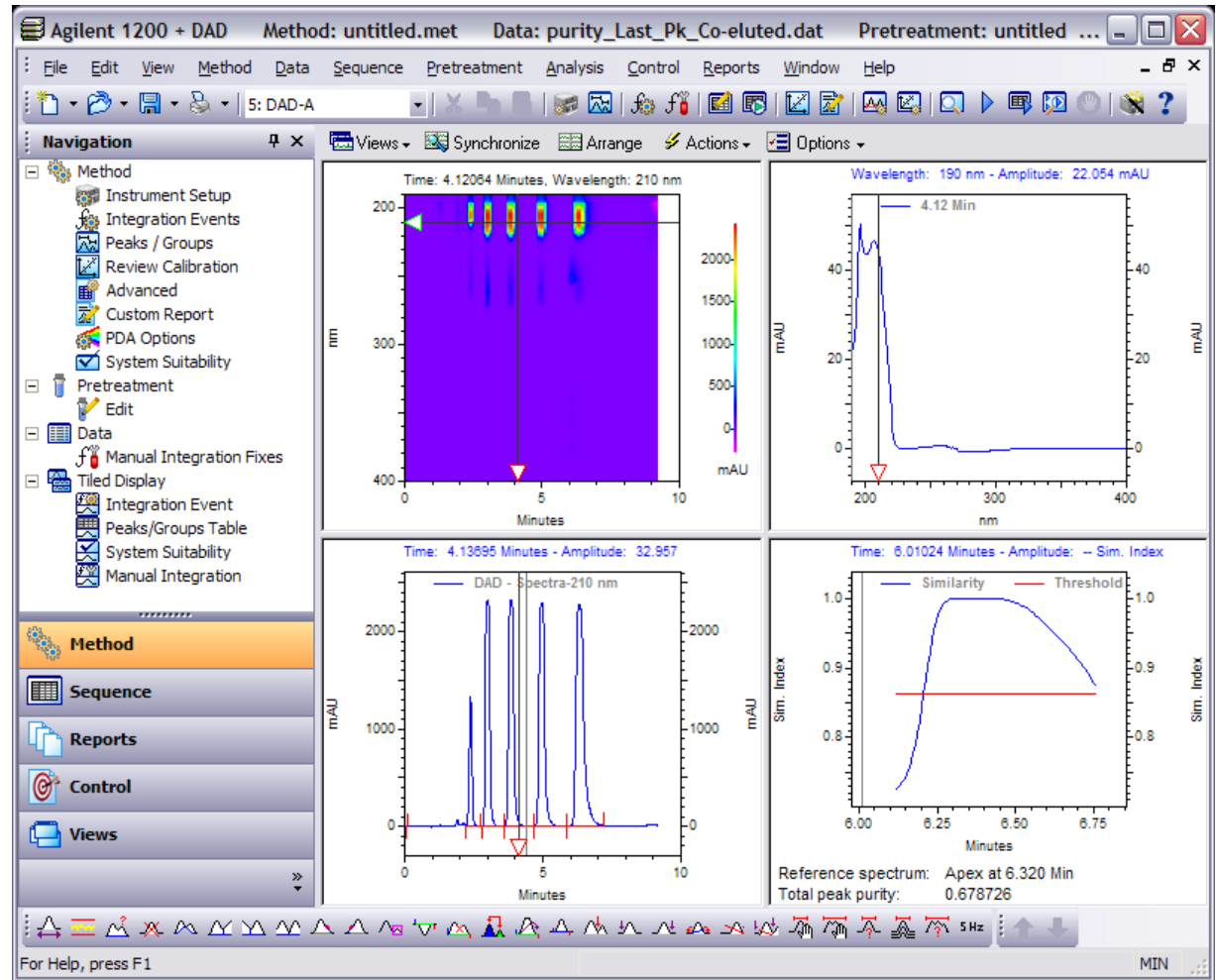


EZChrom Elite 3.2.1

GUI Enhancements

- Re-designed MS Outlook-style User Interface
- Navigation Pane

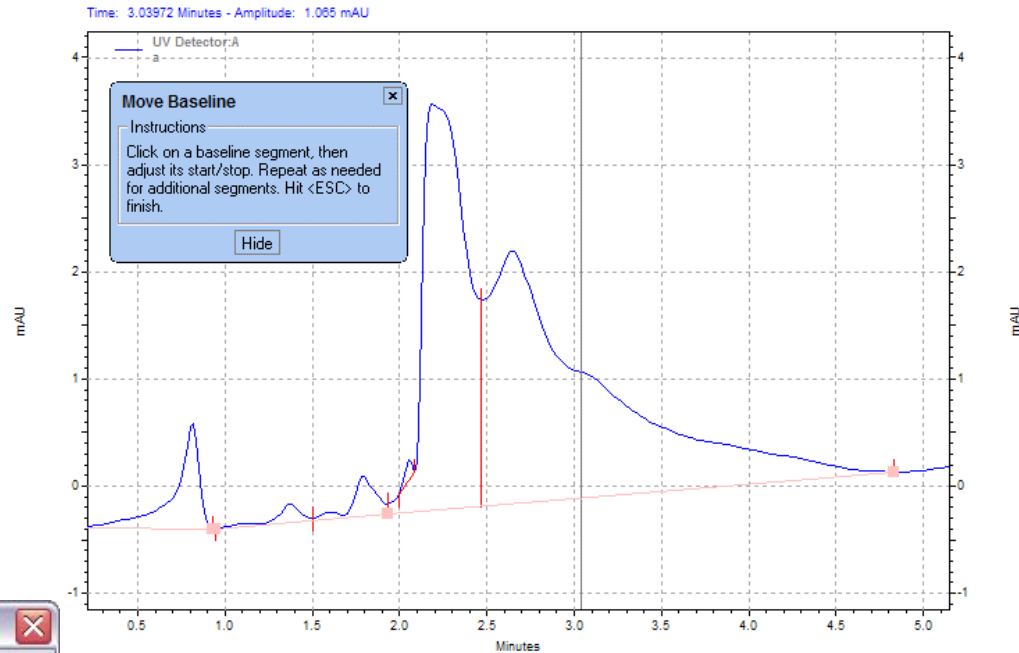
Faster, easier access to commonly used functions



EZChrom Elite 3.2.1

Ease of Use Enhancements

- Enhanced Tip Window for Graphical Programming of Integration Events
- Better *Move Baseline* Event



Move Baseline

	Select	Old BL Start	New BL Start	Old BL Stop	New BL Stop
1	<input checked="" type="checkbox"/>	0.950	0.950	1.933	1.922
2	<input checked="" type="checkbox"/>	0.950	0.950	1.933	1.933
3	<input checked="" type="checkbox"/>	1.933	1.933	4.833	4.833
4	<input checked="" type="checkbox"/>	2.000	2.000	2.083	2.083

Add to Table

Cancel

Help

Analyze Now

Add event to Method (all data)

Add event to this data file only

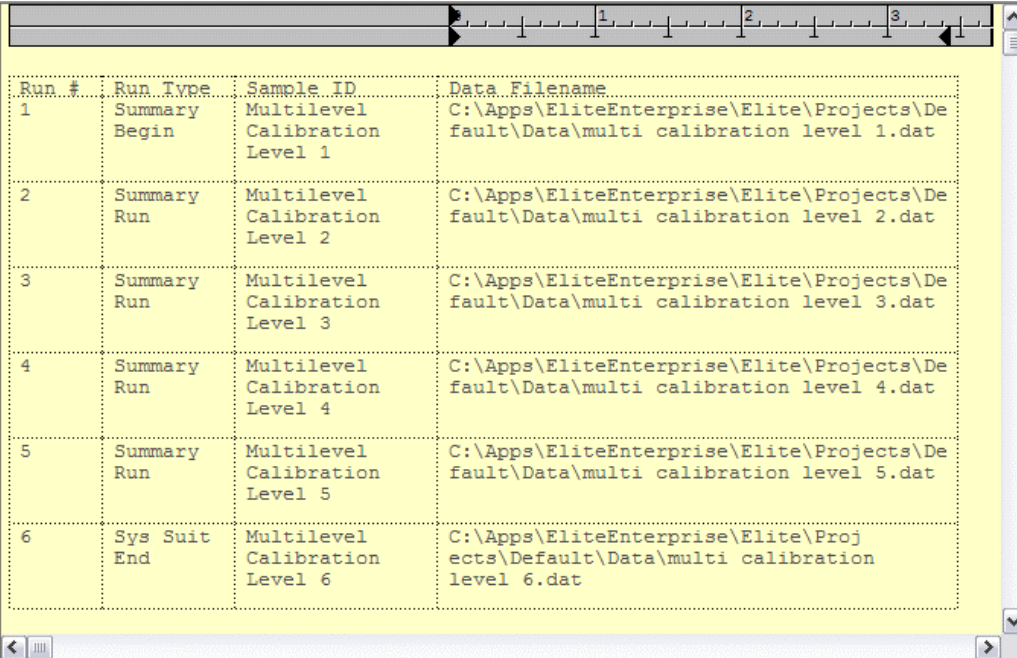
Easy to read, step-by-step, instructions

EZChrom Elite 3.2.1

Reporting Enhancements

- New Sequence Print Object – Choose Columns and Formatting
- Group Annotations on Graph
- Additional Report Fields
 - Run Type
 - Acquired By

Sequence table printouts contain only the information you want to see, in a clean grid layout



Run #	Run Type	Sample ID	Data Filename
1	Summary Begin	Multilevel Calibration Level 1	C:\Apps\EliteEnterprise\Elite\Projects\Default\Data\multi calibration level 1.dat
2	Summary Run	Multilevel Calibration Level 2	C:\Apps\EliteEnterprise\Elite\Projects\Default\Data\multi calibration level 2.dat
3	Summary Run	Multilevel Calibration Level 3	C:\Apps\EliteEnterprise\Elite\Projects\Default\Data\multi calibration level 3.dat
4	Summary Run	Multilevel Calibration Level 4	C:\Apps\EliteEnterprise\Elite\Projects\Default\Data\multi calibration level 4.dat
5	Summary Run	Multilevel Calibration Level 5	C:\Apps\EliteEnterprise\Elite\Projects\Default\Data\multi calibration level 5.dat
6	Sys Suit End	Multilevel Calibration Level 6	C:\Apps\EliteEnterprise\Elite\Projects\Default\Data\multi calibration level 6.dat

EZChrom *Elite* 3.2.1

Analysis Enhancements

- Peak Table Custom Parameters
- Multi-level Bracketing Calibration

Per-peak and per-sample custom values can be used in calculations and reports

Custom Parameters - Sequence Line 1

Method : C:\EliteEnterprise\Elite\Projects\Default\Methods\multilevel.met
Channel :

Per-Peak Values

	Peak Name	Formulation Amt.	Moisture Content
1	Peak 1	.065	.065
2	Peak 2	.12	.12
3	Peak 3	.543	.543
4	Peak 4	.065	.065
5	Peak 5	.12	.12
6	Peak 6	.12	.12
7	Peak 7	.543	.543
8	Peak 8	.065	.065

System Wide Values

	Parameter	Value
1	OEM Lot #	223-FT
2		
3		
4		

Prev Next

OK Cancel Help

EZChrom *Elite* 3.2.1

Audit Trail Enhancements

- Selection from a predefined list of reasons when modifying an audited file

***Better
documentation of
controlled files in a
GLP environment***

General Project Settings

What are the audit trail settings for this project ?

Method Audit Trail

Predefined Audit Trail Reasons

Reason to be added:

Add

List of Reasons:

Delete

Move Up

Move Down

Allow users to type their own reason

Automatically enable audit trail

Prompt for reason at every change

Prompt for reason when saving method

Do not prompt for reason

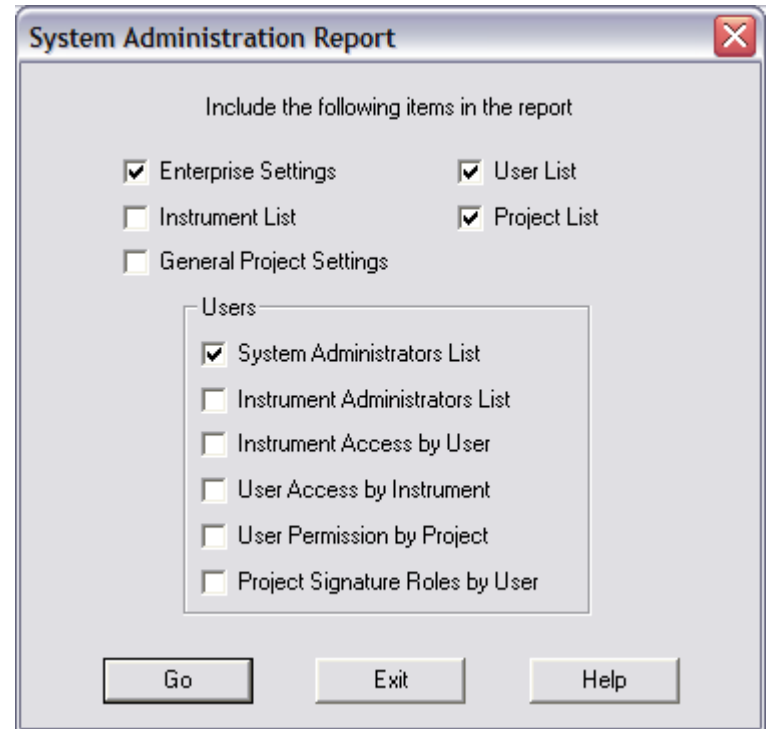
? Cancel < Back Next > Finish

EZChrom *Elite* 3.2.1

System Administration Reports

- Full Documentation of Elite Settings and Permissions

Allows review and documentation of all EZChrom Elite system settings



EZChrom *Elite* 3.2.1

Export Graphics Files

- Scalable Vector Images of Data Graphs
- Export Automatically After Analysis

Customized data graphs can be included in Microsoft Word and other applications.

Graphics Export

#	Export	Export Name
1	<input checked="" type="checkbox"/>	Current Data
2	<input checked="" type="checkbox"/>	Pressure Profile
3	<input checked="" type="checkbox"/>	Overlaid Reference
4	<input type="checkbox"/>	

For each export graphic:

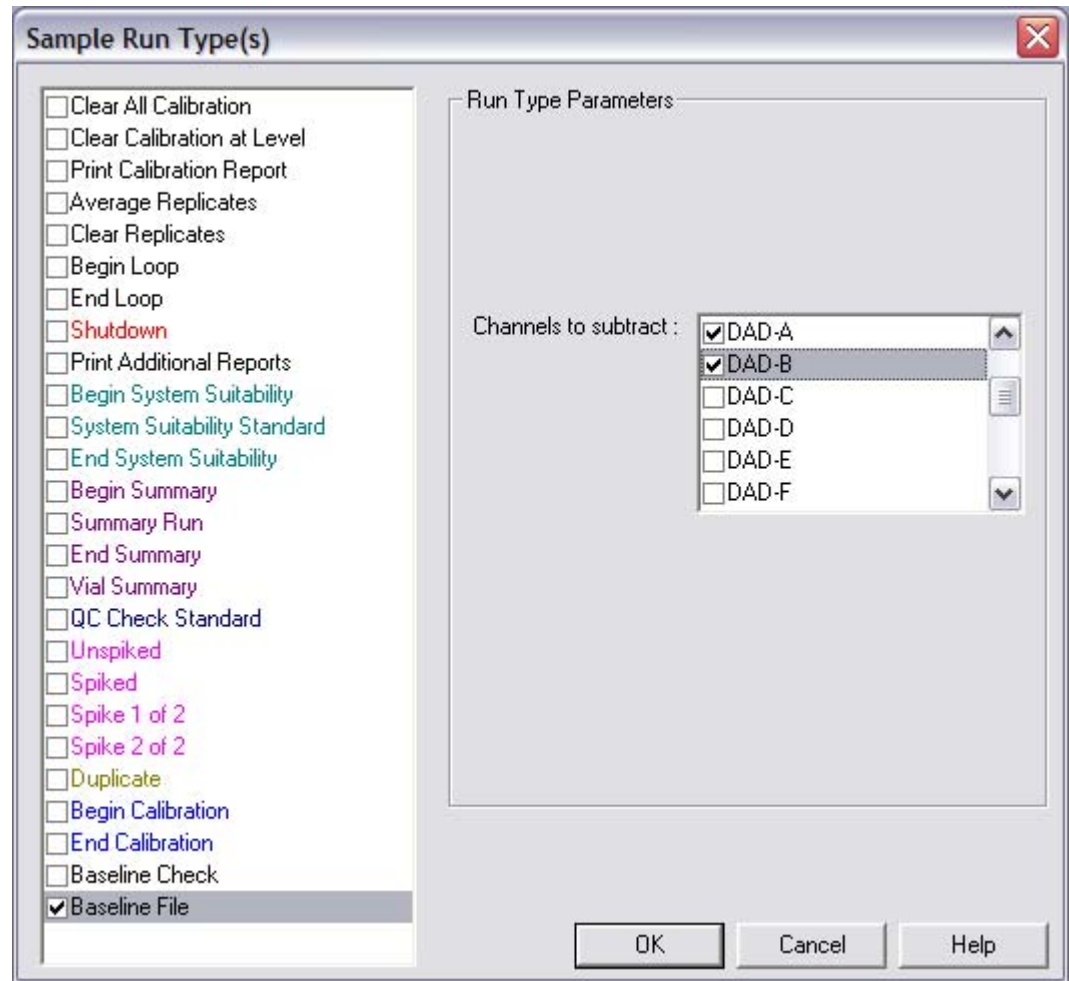
1. Define an Export Name in the spreadsheet above
2. Right Click on the graph below and select 'Add Trace' to add traces
3. Right Click on the graph below to set formatting and annotation options
4. Specify the target export path.

Export Name: Current Data
Time: 9.93958 Minutes - Amplitude: -- mAU

Path for export files:

Specify Baseline Files As Part of A Sequence

No need to run a separate baseline file before a sequence



EZChrom *Elite* 3.2.1

Other Enhancements

- Better Support for Large Active Directory Domains
- Better Client/Server License Management
- Improvements to Installation of Instrument Control Add-ons
- Additional Developer Tools for Automation Toolbox and Rapid Control SDKs

Summary – Why upgrade to EZChrom *Elite* 3.2.1?

- Agilent 7890 GC Support
- Re-designed GUI
- Ease of Use Enhancements
- New Report Objects
- Peak Table Custom Parameters
- Multi-level Sequence Bracketing
- Graphics Export
- Predefined Audit Trail Reasons
- System Administration Reports
- New Baseline Correction Options



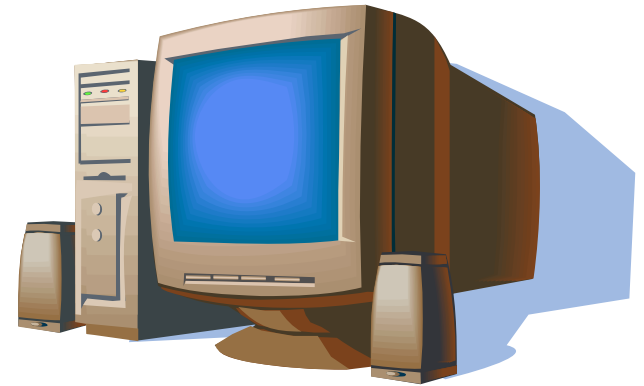
System Requirements

Hardware

- 1 GHz Pentium 4
- 512 MB RAM + 128 MB per Instrument + 64 MB per PDA

Supported Operating Systems

- Windows 2000 SP 4
- Windows XP SP 2
- Windows 2003 SP 1
- Windows 2003 Release 2



EZChrom *Elite* 3.2.1

No Longer Supported

Hardware

- ISA based communications cards
 - SS420 Interface Board (SS420X is supported)
 - ChromNet Board (for Varian CP900x GC)
 - ISA based CIO/DIO Cards (PCI versions are supported)
 - Analog Frequency Pump Control Board

Operating Systems

- Windows NT is NOT supported



How About a Demo?



Questions?

- Features and Benefits
- How To Upgrade

