

Ensure quick detection and identification in your Forensics testing with Agilent Technologies, Inc.

[View this message from Agilent in your browser.](#)

[View this message from Agilent as plain text.](#)



Forensics

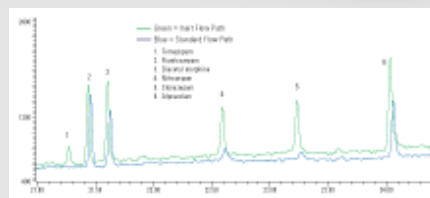
SCREEN WITH CONFIDENCE

Increase Your Forensics Trace-Level Accuracy and Reproducibility

Ensure lower limits of detection in challenging matrices – such as toxicology and forensics testing – with the industry's *only* GC flow path designed to be completely inert.

Agilent Inert Flow Path solutions provide reliable, consistent inertness for your GC flow path, allowing you to:

- Analyze compounds at trace levels in drugs of abuse, blood alcohol, explosives, and doping control applications
- Identify and quantify legal and illegal drugs in biological fluids and other challenging matrices
- Avoid false negatives by making sure your flow path does not adsorb analytes of interest



The Results: Compared to a standard flow path, an Agilent Inert Flow Path delivers increased S/N response, resulting in more accurate peak identification for greater precision analysis.

GET THE FULL STORY



COMPLETE YOUR FORENSICS ANALYSIS WORKFLOW

Agilent Bond
Elut SPE

>> Accuracy
starts here

Agilent
7890B GC

>> Boost
productivity

Agilent
5977A Series
GC/MSD

>> Improve
performance

Agilent
CrossLab
Enterprise
Services

>> Maximize
instrument uptime

Agilent
GC/MSD
ChemStation
Software

>> Integrate data
management

The Measure of Confidence

For more information visit
www.agilent.com/chem/forensics-inert

[Agilent Home](#) | [About Agilent](#) | [Legal](#) | [Subscriptions](#)

5301 Stevens Creek Blvd, Santa Clara CA 95051, USA



Agilent is committed to respecting and protecting your privacy. To view the promises that we make to you regarding your personal information, please view [Agilent's privacy statement](#). For questions related to privacy, please send your inquiry to privacy_advocate@agilent.com. If you prefer not to receive promotional e-mails from Agilent in the future, you can [unsubscribe](#) at

any time. You can also [update](#) your e-mail address, contact information, or interest profile to ensure you receive the most relevant information.

© Copyright 2013 Agilent Technologies. All rights reserved.