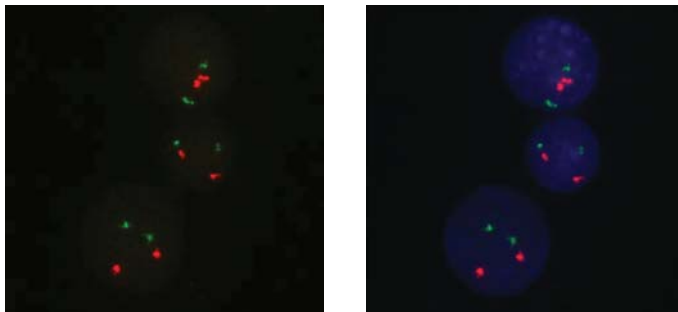




SUREFISH PML-RARA

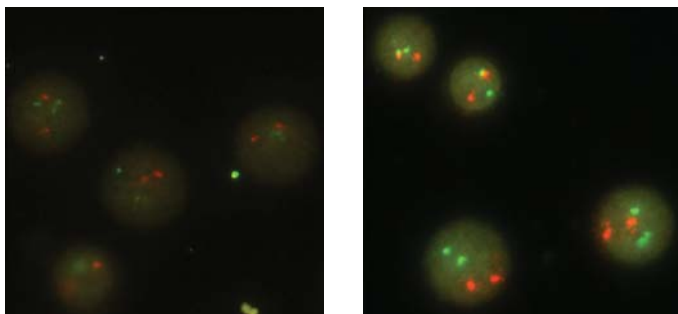
**Agilent's new PML-RARA probes:
bright signals with less background**



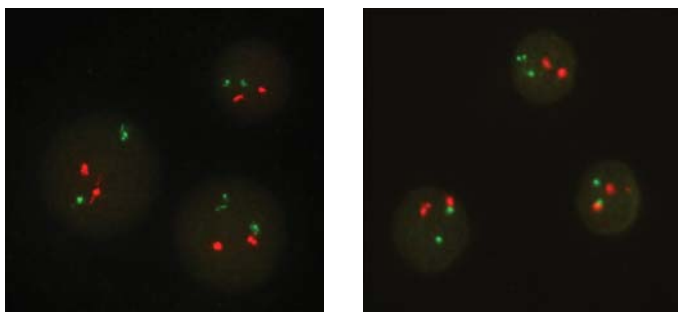
2 hr hyb

16 hr hyb

Competitor



Agilent



1.5 hr hyb

16 hr hyb

Comparison to competitor probes

Competitor probes were hybridized using competitor reagents. Agilent PML-RARA probes were hybridized with IQFISH Fast hybridization buffer.



Agilent PML-RARA probe map

Agilent PML-RARA probes follow standard dual-fusion designs. The length of each child probe is optimized to give bright, balanced signal with low background.

SureFISH PML-RARA

| Part Number | Product Description | Volume |
|-------------|---------------------|--------|
| G101053R | SureFISH PML DF RD | 5ul |
| G101052G | SureFISH RARA DF GR | 5ul |

Ancillary Reagents

| Part Number | Product Description |
|-------------|--|
| G9415A | IQFISH Fast Hybridization Buffer, 20 reactions |

Check Agilent's catalog for a complete menu of hematology probes!



LEARN MORE OR BUY ONLINE:

www.agilent.com/genomics/surefish

Information, descriptions, and specifications in this publication are subject to change without notice. Agilent Technologies shall not be liable for errors contained herein or for incidental or consequential damages in connection with the furnishing, performance, or use of this material.

Analyte Specific Reagents. Analytical and performance characteristics are not established

© Agilent Technologies, Inc. 2014, 2016
Printed in USA, April 7, 2016
5991-4711EN
PR7000-0413

See Deeper. Reach Further.



Agilent Technologies | Genomics