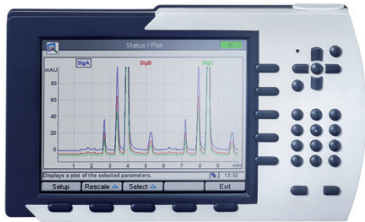


# Agilent 1200 Infinity Series Instant Pilot

## Features, Specifications and Ordering Details



### Bigger, Brighter and in Color

The Agilent 1200 Infinity Series Instant Pilot controller gives you complete control, system monitoring, signal plotting and diagnostic capabilities for a virtually unlimited number of LC system modules. Based on the successful implementation of the industry-standard control area network (CAN) and cabling, used in the first Agilent control module, the Agilent 1200 Infinity Series Instant Pilot is even more powerful.

### Features

- Complete local control and monitoring of an Agilent 1200 Series, 1260 Infinity and 1290 Infinity system or a single module from a single point. However, not for Agilent 1220 Compact LC.
- Mixed system configurations supported, e.g. 1200 Series, 1200 Series SL- and 1100 Series.
- Excellent readability and usability by large colored display with background light, high resolution and contrast.
- Convenient, ergonomic operation either handheld or at the stack with newly developed, secure attachment.
- Handheld or attached to a module in a stack to facilitate operator preferences.
- Easy automation – recalibration intervals and multi-method sequences satisfy the most stringent automation routines.
- Transfer and archiving of methods, sequences and logbooks via standard USB memory sticks.
- Factory installed software – flat dialog structure, user configurable interface, enhanced sequence engine, for example with wait for baseline stabilization, diagnosis with passed/failed.
- GLP – System logbook and module log-books record errors, unusual events and maintenance activities for GLP traceability.



**Agilent Technologies**

## Specifications – Agilent 1200 Infinity Series Instant Pilot

Specifications Agilent 1200 Infinity Series Instant Pilot	
<b>Control</b>	<p><b>For Agilent 1290 Infinity (from firmware B.02.09)</b> All Agilent 1290 Infinity modules, 1200 Series, 1200 SL Series (except fraction collectors with 1st revision) and 1100 Series modules. Mixed 1290 Infinity /1200 Series/1200 SL Series and 1100 Series systems are also supported.</p> <p><b>For Agilent 1260 Infinity (from firmware B.02.11):</b> All Agilent 1260/1290 Infinity modules, 1200 Series, 1200 SL Series (except fraction collectors with 1st revision) and 1100 Series modules. Mixed 1260 /1290 Infinity/1200 Series/1200 SL Series and 1100 Series systems are also supported.</p> <p>Agilent 1120 and 1220 systems are not supported.</p>
<b>Attachment</b>	With additional holder secure attachment to the system or a single module. Attachment modules and with varying angles for ergonomic operation.
<b>Power supply and communication</b>	Through industry-standard controller-area network (CAN) communication and cabling
<b>Display</b>	Large colored display with with background light, high resolution and contrast. All detector signals and available instrument parameters can be plotted with different colors for easier differentiation. Dimensions: 13.1 x 9.9 cm (5.0 x 3.8 inch), 640 x 480 dpi.
<b>Operation</b>	Either handheld or attached to a module in stack allowing for easy adaptation to changing operator preferences
<b>Software</b>	Developed for unmatched usability and productivity: with dynamic adoption of user interface to system configuration, user configurable displays, flat dialog structure with easy to understand icons, wizards, on-line help, methods on- and offline editable, diagnosis with passed/failed, enhanced sequence engine and others
<b>Storage</b>	Data transfer and archiving of methods, sequences, logbooks, diagnosis results) via USB memory sticks. Since memory sticks vary from vendor to vendor, or from type to type, incompatibilities can occur. It is therefore recommended to order the tested stick from Agilent with kit number G4208-68700.

## Ordering Details – Agilent 1200 Infinity Series Instant Pilot

Description	Product Number
<p><b>Agilent 1200 Infinity Series Instant Pilot</b> Includes CAN cable, holder for secure attachment at system stack or single module. USB port and factory loaded software included.</p>	G4208A
<p><b>USB memory stick kit for Instant Pilot (256 MB)</b> <i>We recommend use of this memory stick since it has been tested. You can also use other USB-memory sticks with USB 1.1 support that are FAT-16 formatted and without encryption, maximum size is 2 GB. A further requirement is that the stick can be physically inserted while the instant pilot is attached to the Agilent system. Since USB-memory sticks may vary from vendor to vendor or even from type to type, incompatibilities can occur. In general, USB-memory sticks from Sandisk and Kingston should work.</i></p>	G4208-68700

[www.agilent.com/chem/1200](http://www.agilent.com/chem/1200)

© Agilent Technologies, Inc., 2010  
Published in USA, July 1, 2010  
Publication Number 5990-6128EN



**Agilent Technologies**