



EZChrom SI (Single Instrument) Overview

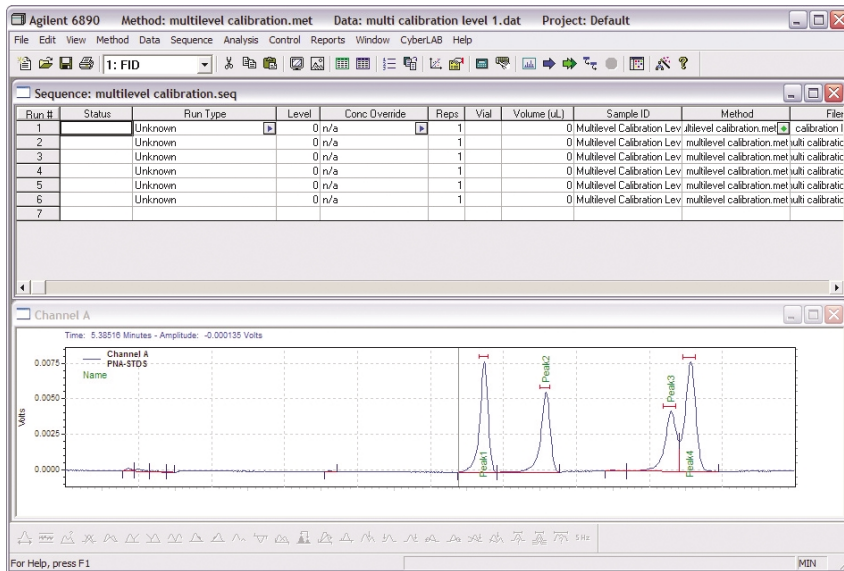


Figure 1. EZChrom SI is a complete data acquisition, processing, and control package for 1 instrument.

What is EZChrom SI?

Based on the outstanding EZChrom *Elite*™ software platform, EZChrom SI (Single Instrument) is the ideal solution for laboratories wanting an inexpensive, simple to use chromatography data system with basic software features and instrument control. It is intended to provide the basic requirements for data acquisition, data reduction and instrument control for a single instrument without many of the extended software capabilities of standard EZChrom. With EZChrom SI, instrument control and analysis is reduced to just 3 steps: *Configure, Run and Report*.

EZChrom SI's Instrument Control Capability

In addition to providing basic chromatography data handling capability, each EZChrom SI system includes integrated instrument control for one of a wide variety of instruments.

Key Benefits

- Takes you from instrument configuration to data analysis in just 3 steps.
- An affordable cost-effective solution with integrated instrument control of numerous vendors for the single instrument/single user.
- Facilitate productivity further with Method and Sequence wizards.
- Respond automatically and intelligently to real-world conditions with SmartSequence™ technology.
- Export capability provides connectivity to LIMS, databases, or Enterprise Content Manager post-run data handling.

EZChrom SI variants provide instrument control for a wide range of GC or HPLC instruments (2D data acquisition) from the world's leading instrumentation manufacturers. A broad selection of EZChrom SI variants is available for GC and HPLCs from Agilent Technologies, Shimadzu, Varian, Thermo Electron, Waters and many others.

EZChrom SI variants are also available for instruments that provide analog signal output from their detectors. This solution is ideal for laboratories that have legacy equipment.

Run in One Window

Once the instrument is configured, any user can launch EZChrom SI, immediately choose a method and submit samples for acquisition. All of these operations can be done in EZChrom SI's Single Window Access environment - a design that greatly simplifies tasks for the casual or novice user. Both single runs and sequence runs can be performed.

Extensive Chromatography Data Reduction through EZChrom SI

EZChrom SI provides the standard chromatography data reduction capability in regular EZChrom *Elite*. Peak detection, integration, graphic displays and reporting are available to accommodate GC and HPLC data. Quantitation options ranging from internal and external standard, area percent and normalized percent reporting can be used. Users can take advantage of the intelligent features in SmartSequence™, a powerful tool that automates much of the decision making process based on user defined criteria. Software wizards help users easily construct methods and sequences. If methods or sequences need to be created from scratch, our easy-to-use wizards will guide you through a stepwise process. Built-in software features for exporting results to external applications such as a third party LIMS or external database are provided as well.

Scale-Up When You're Ready

EZChrom SI is part of the EZChrom *Elite* platform and can be easily scaled up to standard EZChrom *Elite*. When you are ready to upgrade to the full features of EZChrom *Elite*, including multi-instrument control in a networked enterprise, PDA (3D data handling capability), extensive user and project administration, electronic signature, advanced reporting and audit trail functionality of the standard EZChrom *Elite* CDS, your methods, data files and instrument configurations from EZChrom SI will be forward compatible. Hardware devices and cards used in EZChrom SI are compatible with EZChrom *Elite* so that those investments are retained.

Agilent Technologies provides EZChrom SI to EZChrom *Elite* migrations to make these scale ups easy and affordable.

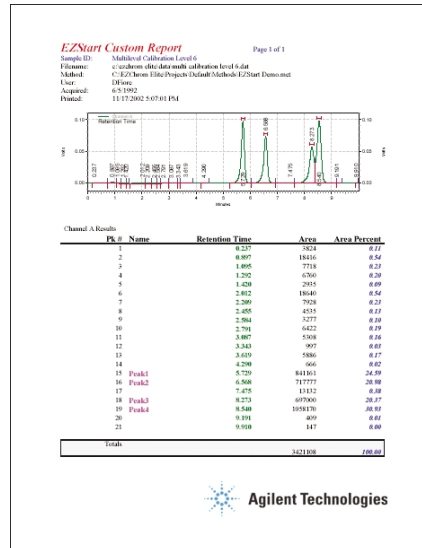


Figure 2. Typical report generated from EZChrom SI.

Wide Range of Data Reports

Every EZChrom SI method includes a report template. Users simply select from standard templates and can produce the reports they require. EZChrom SI's custom report editor may be used to modify existing templates or to create new report templates.

Computer Requirements

EZChrom SI software requires Windows XP (SP1) or Windows 2000 (SP3). Microsoft Internet Explorer version 5.0 or greater is also required. Some EZChrom SI packages require, but do not include, GPIB card from Agilent Technologies. RS232 ports on the computer or a RS232 communications board may be required for some instruments. Minimum specifications: Pentium IV (800MHz or greater), minimum 256 MB RAM, minimum 10 GB hard disk space.

	EZChrom SI	EZChrom Stand-Alone	EZChrom Client/Server
Embedded instrument settings stored with all results	Y	Y	Y
Method / Sequence Wizards	Y	Y	Y
Multi-Level Calibrations Internal/External Quantitation	Y	Y	Y
Graphic Editing / Review of Data	Y	Y	Y
SmartSequence Capability	Y	Y	Y
Postrun Analysis Capability	Y	Y	Y
Method / Sequence Audit Trails	N	Y	Y
21 CFR Part 11 Electronic Signatures	N	Y	Y
PDA Analysis Capability	N	Y	Y
Advanced Reports	N	Y	Y
Method / Sequence Custom Reports	Y	Y	Y
Multi-User Administration / Accounts	N	Y	Y
Controlled by Automation SDK	N	Y	Y
Configuration of >1 Instrument	N	Y	Y

Visit www.agilent.com/chem/scisw
or call toll free **1-800-227-9770**
(U.S. and Canada).

In other countries, please call your local
Agilent Technologies analytical sales office or
Authorized Agilent Technologies Distributor.

This information is subject to change without notice.
© Agilent Technologies, Inc. 2005
Printed in U.S.A. November 2005
5989-4294EN