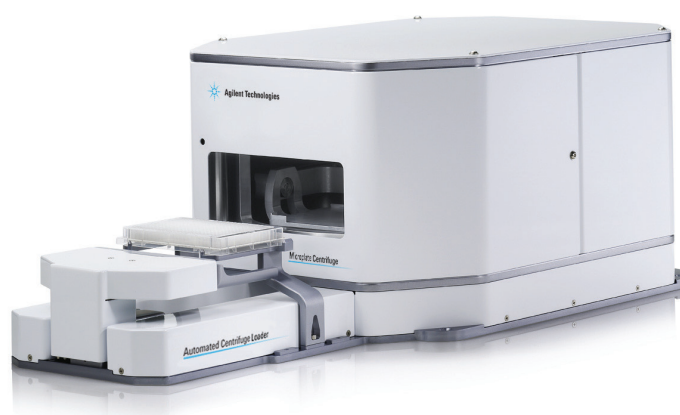


Agilent Microplate Centrifuge



Applications

- Filtration protocols for PCR purification
- Cell harvesting for plasmid preps
- Condensate spin-down for post-PCR processes
- Removal of air bubbles in high-density plates

Introduction

The Agilent Microplate Centrifuge is a small robot-accessible automated centrifuge. It also provides both vibration and noise control in a small, low-maintenance package. Ideal for high or medium-throughput applications. The Microplate Centrifuge is capable of rapid acceleration and deceleration (a customizable setting), minimizing the required cycle time. It is excellent for filtration protocols, air bubble removal in high-density microplates and spin-downs including cells and cellular debris. A solid and efficient design allows Microplate Centrifuge units to be stacked to save space. The door design allows for access to the buckets by a range of articulated robots, for high throughput applications. For robots that cannot reach through the door, the Automated Centrifuge Loader allows unobstructed accessibility. With a three-second loading time and robust motion control, the Automated Centrifuge Loader can be accessed by most laboratory microplate handlers/robots.

Features and Benefits

- Compact Footprint: The Agilent Microplate Centrifuge takes up very little bench space, and fits easily in integrated systems.
- Accessibility: With the Automated Centrifuge Loader, the Microplate Centrifuge can be integrated with many robotic systems.
- Stackable Design: Multiple Microplate Centrifuge units can be stacked on each other, increasing the system throughput without adding to the footprint.

Additional Information

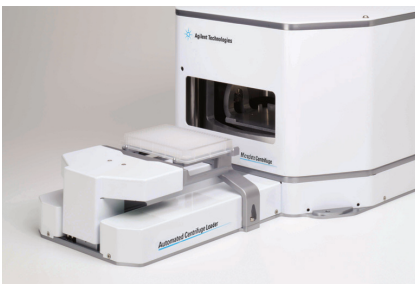
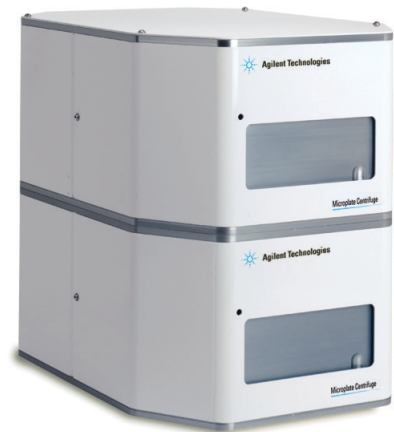
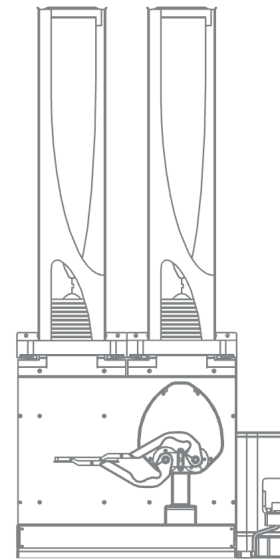
Workstations

- Automated Spin-down Station
- BenchCel Microplate Handling System with Microplate Centrifuge and Automated Centrifuge Loader

When batches of microplates need to be spun down at one time, this spin-down station is a good choice. The Microplate Centrifuge integrates easily with the BenchCel Microplate Handler providing walkaway convenience. A simple software interface allows users to specify the centrifugation settings and with the click of the mouse, the BenchCel Platform and Microplate Centrifuge take care of the rest.

Optional Microplate Loader

Automated Centrifuge Loader load sequence begins with automated door opening, microplate lifted by the Automated Centrifuge Loader to facilitate robotic microplate hand-off, and placement into one of two internal centrifuge microplate carriers.



Specifications

Table 1. Specifications

Top Speed/g	3,000 RPM/1,000 g
Maximum Payload (per bucket)	250 g [8.8 oz]
Acceleration/Deceleration	7.5 sec 0–3,000 RPM
Maximum Imbalance	10 g [0.35 oz]
Capacity	Two microplates or tube racks
Labware Compatibility Microplates	All ANSI-compliant standard microplates including deep well microplates, PCR microplates, and tube racks
Maximum Microplate Height	4.83 cm [1.90 in]

Operating Requirements

Table 2. Operating requirements

Electrical	100–240 VAC, 50/60 Hz, Operating AC Current 7A/120V or 3.5A/240V (typical), Inrush Current 20A/120V or 40A/240V (typical)
Air	28 Lpm at 5.5 bar [<1 cfm at 80 psi]
Environment	4–40 °C
Controller	PC with Windows 2000, XP or other VWorks Compatible Operating System
Interface	RS-232 serial port with a DB9 pin connector
Certification	CE certified

Table 3. Dimensions

Microplate Centrifuge	
Height	20.6 cm [8.1 in]
Width	32.8 cm [12.9 in]
Depth	45.7 cm [18 in]
Weight	26 kg [58 lb]
Agilent Microplate Centrifuge with Automated Centrifuge Loader	
Height	24.8 cm [9.8 in]
Width	32.8 cm [12.9 in]
Depth	71.4 cm [28.1 in]
Weight	35 kg [76 lb]

Part No.	Description
G5582AA/GA	Agilent Microplate Centrifuge

www.agilent.com/chem

This information is subject to change without notice.

DE.3608564815

© Agilent Technologies, Inc. 2020
Printed in the USA, July 28, 2020
5990-3484EN

