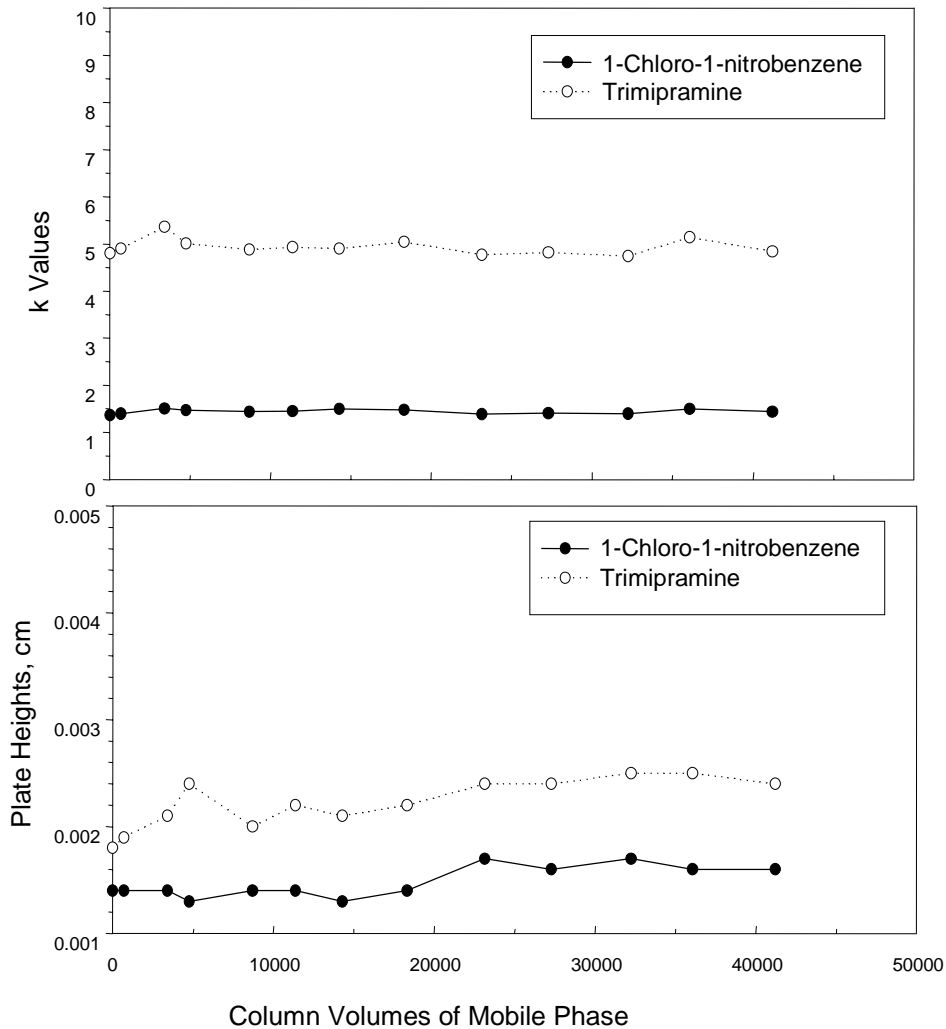


Extend-C18 is Very Stable at High pH

Aging of Extend-C18 column in NH₄OH at pH 10.5



Column: ZORBAX Extend-C18
4.6 x 150 mm, 5 μ m
Mobile phase: 80% Methanol
20% 20 mM NH₄OH, pH 10.5
Flow Rate: 1.5 mL/min;
Aging at 24°C, tests at 40°C

- **Consistent retention and plate heights over time indicate stable column at high pH.**
- **Long column lifetime achieved.**