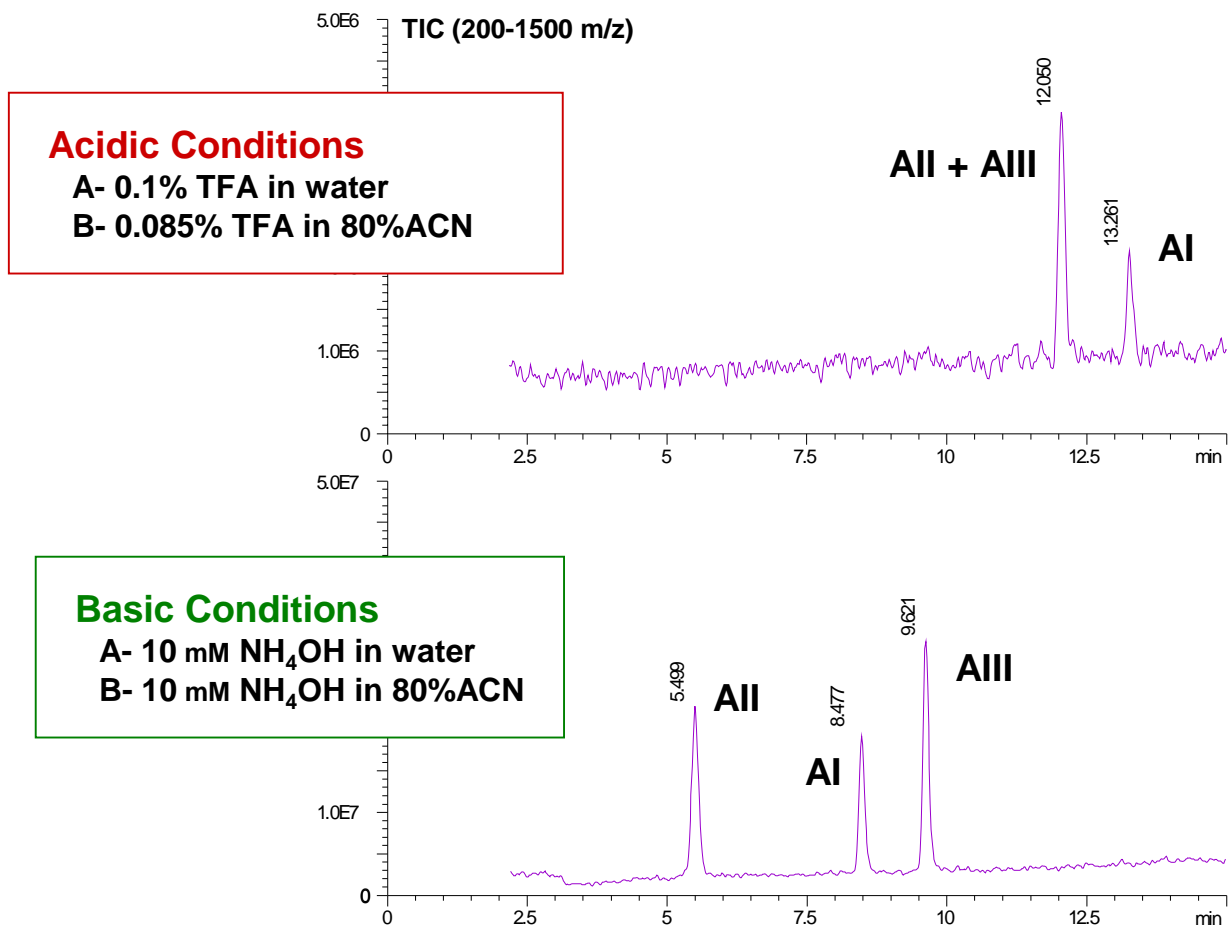


Angiotensins Separation at High and Low pH on Extend-C18



**Column: ZORBAX Extend-C18,
2.1 x 150 mm, 5 μm**

Agilent 1100
MSD: Pos. Ion ESI
Vf 70V, Vcap 4.5 Kv
N₂=35psi, 12L/min.
325°C

Gradient: 15-50%B / 15 min.
0.2 mL/min

Temp: 35°C
Sample: 2.5 μL
(50 pmol each)