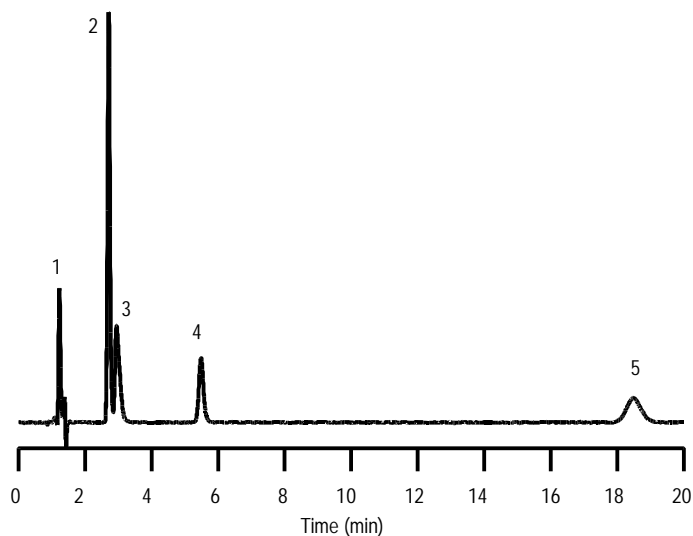


Comparison Separation of Catecholamines Reversed-Phase and Ion-Pair HPLC

Reversed Phase HPLC

A: 97.5% H₂O with 0.1%TFA

B: 2.5% Acetonitrile

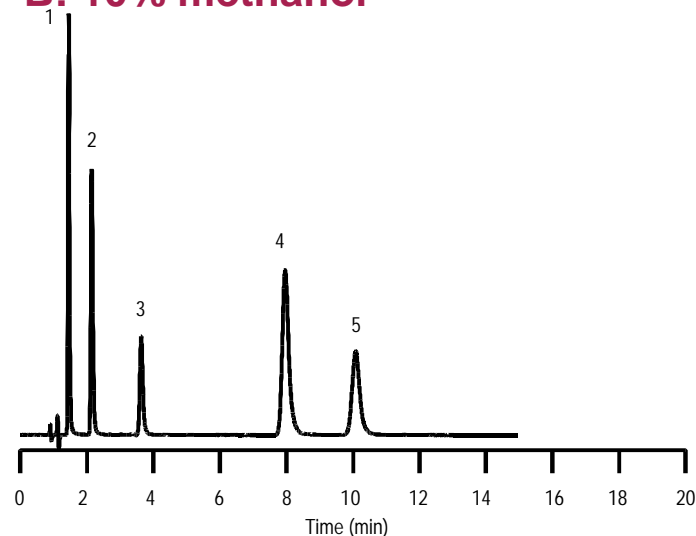


Column: ZORBAX SB-C18, 4.6 x 150 mm, 5 μ m
3. Tyramine 4. DOPAC 5. Homovanillic acid

Ion-Pair HPLC

A: 90% 70 mM sodium phosphate, pH 3
10 mM hexane sulfonate

B: 10% methanol



Sample: 1. Norepinephrine 2. Vanillyl Mandelic Acid

