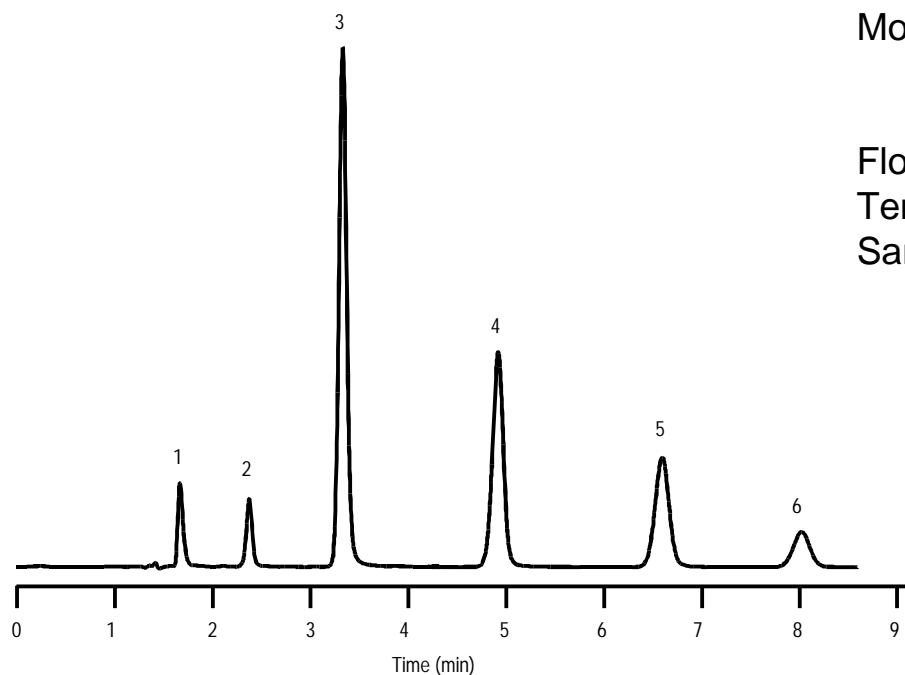


# Isocratic Elution

Separation occurs using a constant composition mobile phase

## Substituted Anilines



Column: ZORBAX SB-C18  
4.6 x 150 mm, 5  $\mu$ m  
Mobile Phase: 42% Methanol  
58% 25 mM phosphate buffer  
pH 2.5  
Flow Rate: 1 mL/min  
Temperature: 22°C  
Sample: 1. p-anisidine  
2. m-toluidine  
3. 3-aminobenzonitrile  
4. p-chloroaniline  
5. m-chloroaniline  
6. o-chloroaniline

