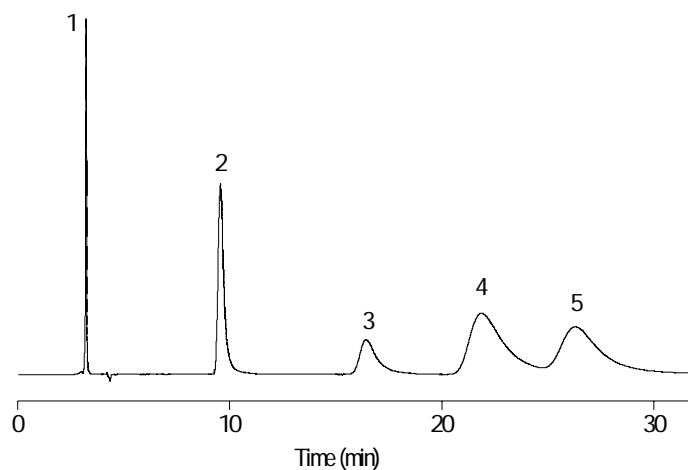


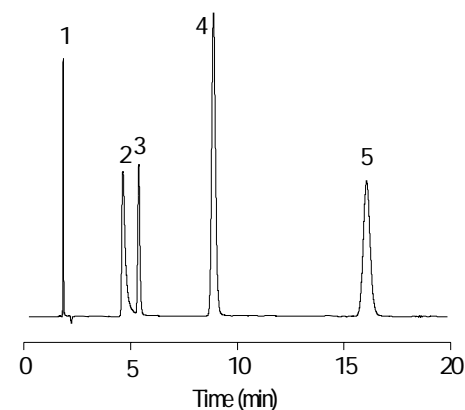
Extend-C18 Provides High Efficiency and Good Peak Shape

Mobile Phase: 65% 20 mM TEA, pH 11: 35% MeOH Temperature: RT Detection: UV 254 nm
Sample: 1. Pyridoxine 2. Pyridine 3. n-Methylbenzylamine 4. Procainamide 5. n-Acetylprocainamide

Polymeric-Based Column
4.0 x 250 mm, 5 µm
Flow Rate: 0.5 mL/min



Extend-C18
4.6 x 250 mm, 5 µm
Flow Rate: 1.0 mL/min



- In comparison to polymeric columns, the Extend-C18 has superior efficiency and peak shape

