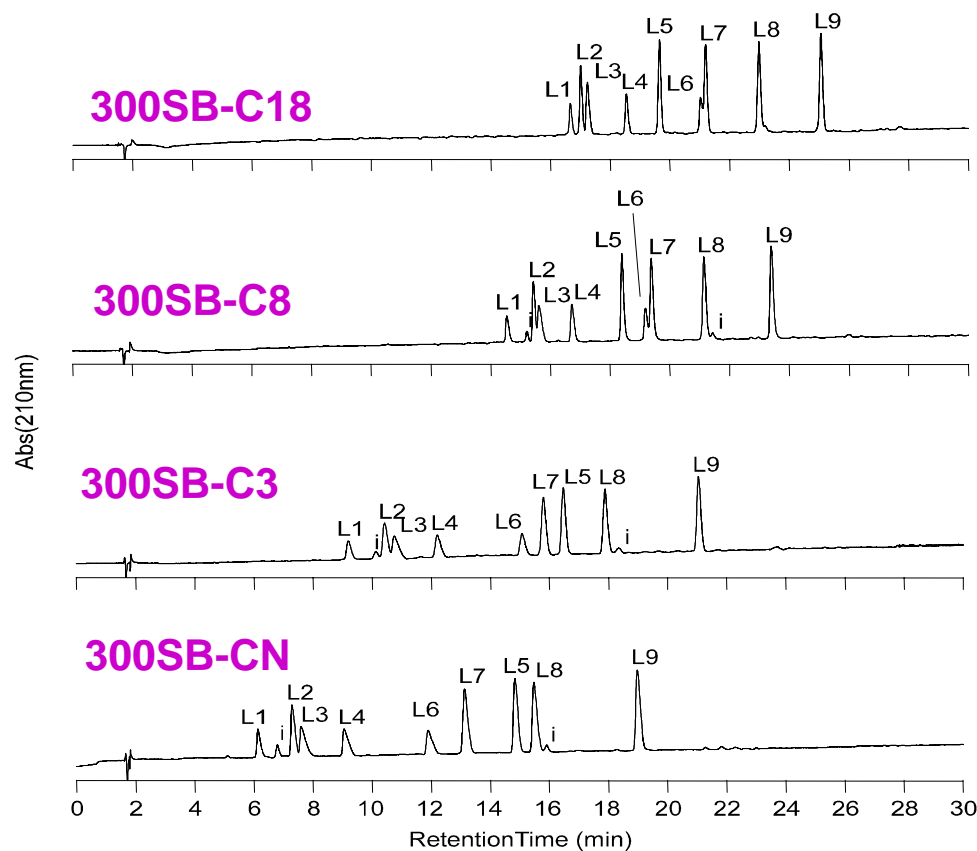


# Comparison of Bonded-Phase Options – Affect on Selectivity and Retention of Polypeptides



Columns: **ZORBAX 300SB, 4.6 x 150 mm, 5  $\mu$ m**

Mobile Phase: Gradient, 0 - 26% B in 30 min.

A = 0.1% TFA in Water

B = 0.1% TFA in Acetonitrile

Temperature: 40°C

Sample: 2  $\mu$ g of each peptide

Flow Rate: 1.0 mL/min

Detection: UV 210nm

