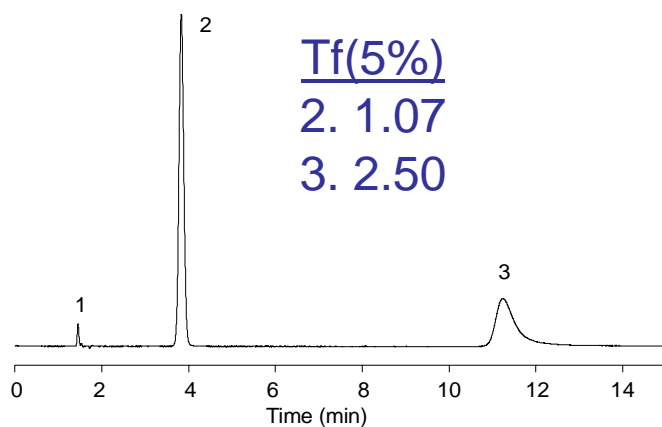


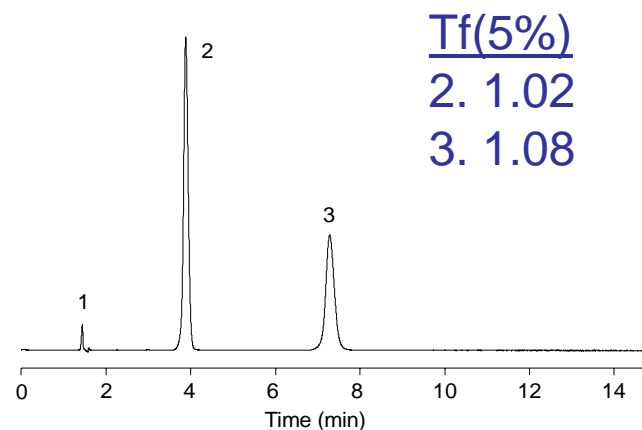
Double Endcapping Provides Superior Peak Shape Eclipse XDB-C18 vs. Luna C18

Columns: 4.6 x 150 mm, 5 mm Mobile Phase: 50% 25 mM Na₂HPO₄, pH 7.12: 50% MeOH
Detection: UV 254 nm Flow Rate: 1.0 mL/min Temperature: 25°C Sample: 1. Uracil 2. Amlodipine 3. Benazepril

Phenomenex Luna C18



Eclipse XDB-C18



- Eclipse XDB shows superior peak shape for the basic compound, benazepril.

