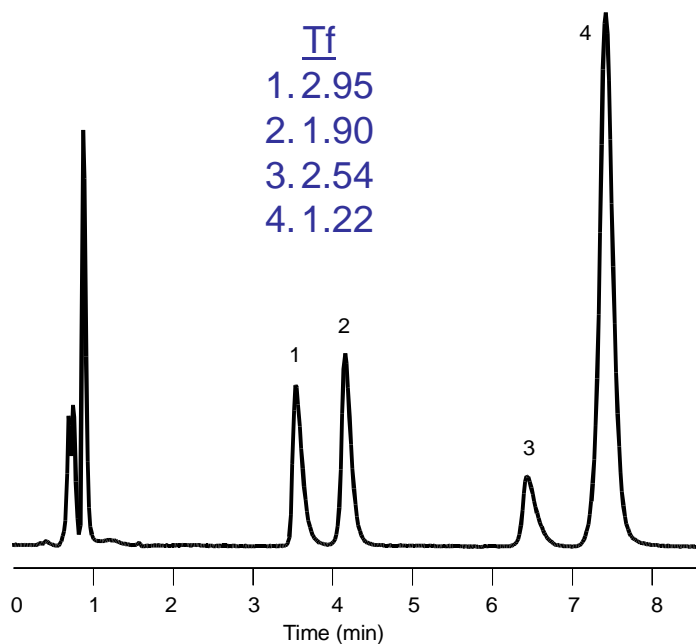


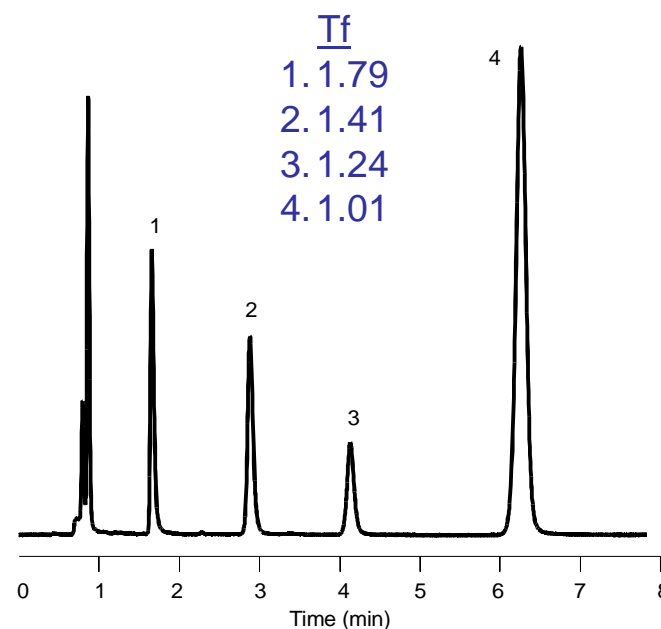
# Double Endcapping Improves Peak Shape – pH 7

Columns: 4.6 x150 mm, 5 mm    Mobile Phase: 60% ACN : 40% 10 mM phosphate buffer pH 7.0    Flow Rate: 1.5 mL/min.  
Temperature: 40°C    Sample: 1. Nortriptyline pKa 9.7 2. Doxepin pKa 9.0 3. Amitriptyline pKa 9.4 4. Trimipramine

## Single Endcapped Waters Symmetry C18



## Double Endcapped Eclipse XDB-C8



- Each column is made from high purity silica
- Fewer silanol interactions on the double endcapped column reduce tailing and retention

