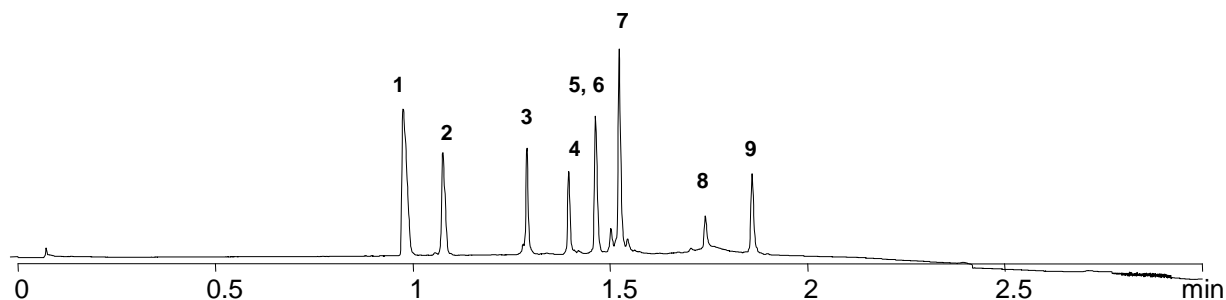


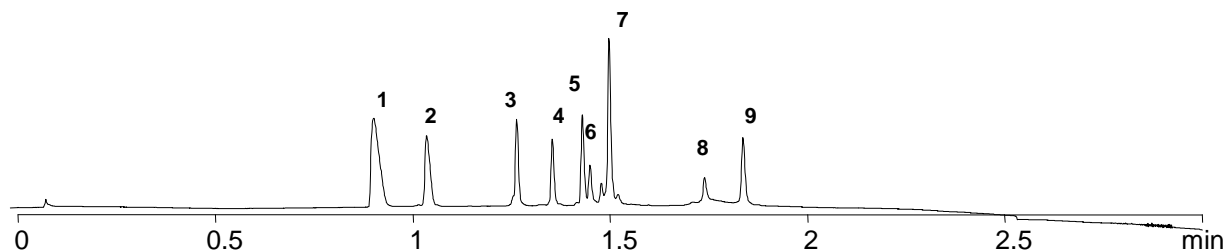
More Poroshell Bonded Phases Provide Selectivity Options to Enhance Resolution

Conditions: columns – as listed Mobile Phase: A 0.1% TFA/H₂O, B 0.07% TFA/ACN; Gradient: 5-100% B in 3.0 min Temperature: 70 °C; Flow rate: 0.5 ml/min;
Detector: UV 215 nm; Samples: 1. Angiotensin II 2. Neurotensin 3. RNase A 4. Insulin B Chain 5. Insulin 6. Cytochrome C 7. Lysozyme 8. Myoglobin
9. Carbonic Anhydrase

Poroshell 300SB-C18, 2.1 x 75 mm, 5 μm



Poroshell 300SB-C3, 2.1 x 75 mm, 5 μm



• Poroshell 300SB-C3 provides complete resolution of Insulin and Cytochrome C, where as the 300SB-C18 does not.

Agilent Technologies

Slide 25

