

## Halothane

**Column:** GS-GasPro  
15 m x 0.32 mm

**J&W P/N:** 113-4312

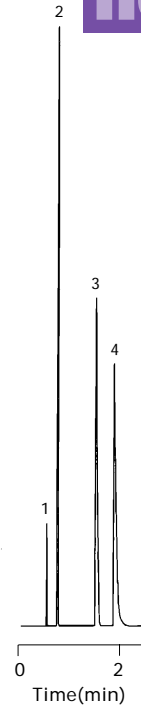
**Carrier:** Helium at 45 cm/sec

**Oven:** 240°C, isothermal

**Injector:** Split 1:100, 0.2 µL, 200°C

**Detector:** FID, 200°C

1. Nitrogen
2. Halothane
3. Diethyl ether
4. Acetone



C591