

Ethylene

Column: GS-Alumina

50 m x 0.53 mm I.D.

J&W P/N: 115-3552

Carrier: Helium at 11 mL/min, measured at 35°C

Oven: 35°C for 2 min

35-190°C at 6°/min

190°C for 3 min

Injector: Split 1:30, 200°C

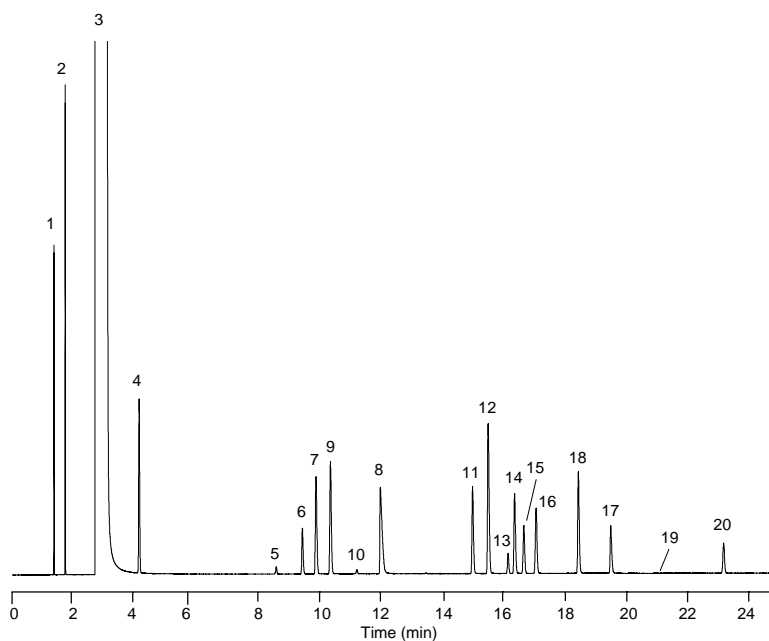
0.2 mL of trace hydrocarbons in ethylene

Detector: FID, 200°C

Nitrogen makeup gas at 20 mL/min



1. Methane
2. Ethane
3. Ethylene
4. Propane
5. Cyclopropane
6. Propylene
7. Isobutane
8. Acetylene
9. *n*-Butane
10. Propadiene
11. *trans*-2-Butene
12. 1-Butene
13. Isobutylene
14. *cis*-2-Butene
15. Isopentane
16. *n*-Pentane
17. Propyne
18. 1,3-Butadiene
19. 1-Pentene
20. *n*-Hexane



C585