

## FAME Standard

**Column:** DB-225

20 m x 0.10 mm I.D., 0.10 µm

**J&W P/N:** 127-2222 (cut to 10 m)

**Carrier:** Hydrogen at 59.3 cm/sec,  
measured at 35°C

**Oven:** 35° for 0.5 min  
35-195°C at 25°/min  
195-205°C at 3°/min  
205-230°C at 8°/min  
230°C for 1 min

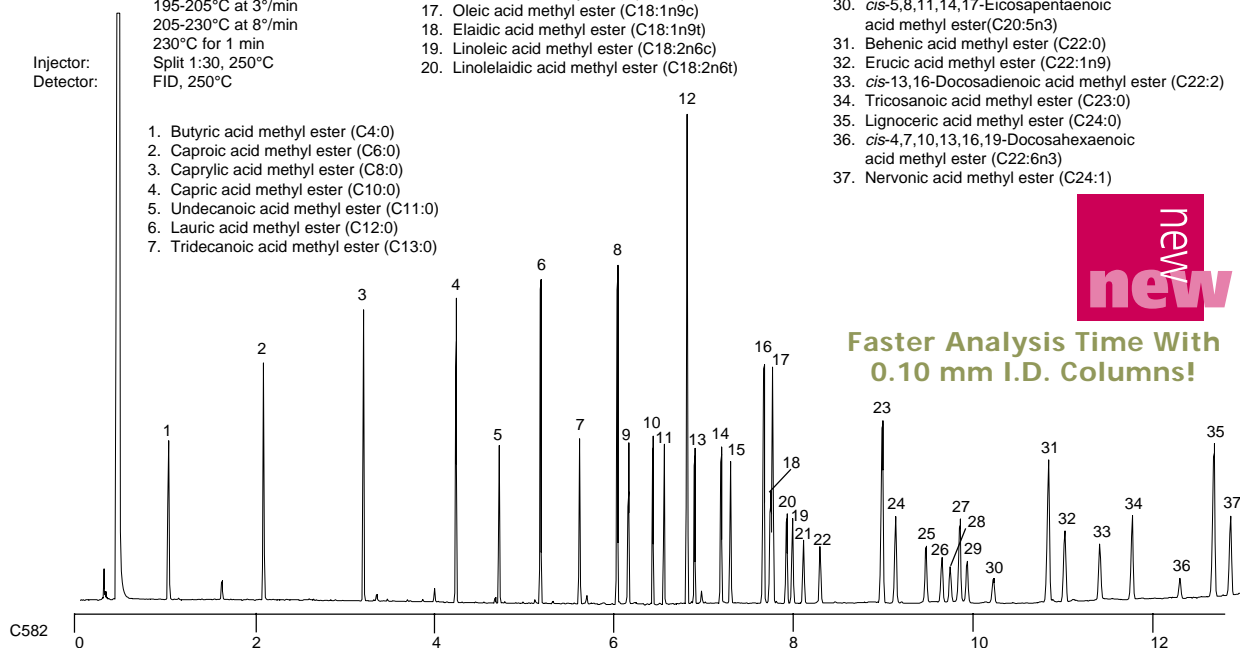
**Injector:** Split 1:30, 250°C

**Detector:** FID, 250°C

1. Butyric acid methyl ester (C4:0)
2. Caproic acid methyl ester (C6:0)
3. Caprylic acid methyl ester (C8:0)
4. Capric acid methyl ester (C10:0)
5. Undecanoic acid methyl ester (C11:0)
6. Lauric acid methyl ester (C12:0)
7. Tridecanoic acid methyl ester (C13:0)

8. Myristic acid methyl ester (C14:0)
9. Myristoleic acid methyl ester (C14:1)
10. Pentadecanoic acid methyl ester (C15:0)
11. *cis*-10-Pentadecenoic acid methyl ester (C15:1)
12. Palmitic acid methyl ester (C16:0)
13. Palmitoleic acid methyl ester (C16:1)
14. Heptadecanoic acid methyl ester (C17:0)
15. *cis*-10-Heptadecenoic acid methyl ester (C17:1)
16. Stearic acid methyl ester (C18:0)
17. Oleic acid methyl ester (C18:1n9c)
18. Elaidic acid methyl ester (C18:1n9t)
19. Linoleic acid methyl ester (C18:2n6c)
20. Linolelaidic acid methyl ester (C18:2n6t)

21.  $\gamma$ -Linolenic acid methyl ester (C18:3n6)
22. Linolenic acid methyl ester (C18:3n3)
23. Arachidic acid methyl ester (C20:0)
24. *cis*-11-Eicosenoic acid methyl ester (C20:1)
25. *cis*-11,14-Eicosadienoic acid methyl ester (C20:2)
26. *cis*-8,11,14-Eicosatrienoic acid methyl ester (C20:3n6)
27. Heneicosanoic acid methyl ester (C21:0)
28. *cis*-11,14,17-Eicosatrienoic acid methyl ester (C20:3n3)
29. Arachidonic acid methyl ester (C20:4n6)
30. *cis*-5,8,11,14,17-Eicosapentaenoic acid methyl ester (C20:5n3)
31. Behenic acid methyl ester (C22:0)
32. Erucic acid methyl ester (C22:1n9)
33. *cis*-13,16-Docosadienoic acid methyl ester (C22:2)
34. Tricosanoic acid methyl ester (C23:0)
35. Lignoceric acid methyl ester (C24:0)
36. *cis*-4,7,10,13,16,19-Docosahexaenoic acid methyl ester (C22:6n3)
37. Nervonic acid methyl ester (C24:1)



**Faster Analysis Time With  
0.10 mm I.D. Columns!**