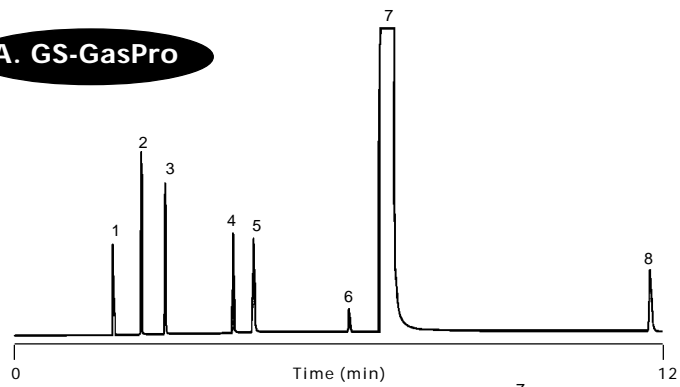


**Column:** GS-GasPro  
30 m x 0.32 mm I.D.  
**J&W P/N:** 113-4332  
**Carrier:** Nitrogen at 29 cm/sec  
**Oven:** 40°C for 2 min  
40 - 200°C at 10°/min  
**Injector:** 200 µL  
**Detector:** FID

1. Methane
2. Ethane
3. Ethylene
4. Acetylene
5. Propane
6. Cyclopropane
7. Propylene
8. *cis*-2-Butene

**A. GS-GasPro**



**Column:** Al<sub>2</sub>O<sub>3</sub>/KCl  
50 m x 0.53 mm I.D.  
**Carrier:** Nitrogen at 29 cm/sec  
**Oven:** 40°C for 3 min  
40 - 200°C at 10°/min  
**Injector:** 25 µL  
**Detector:** FID

**B. Al<sub>2</sub>O<sub>3</sub>/KCl**

