

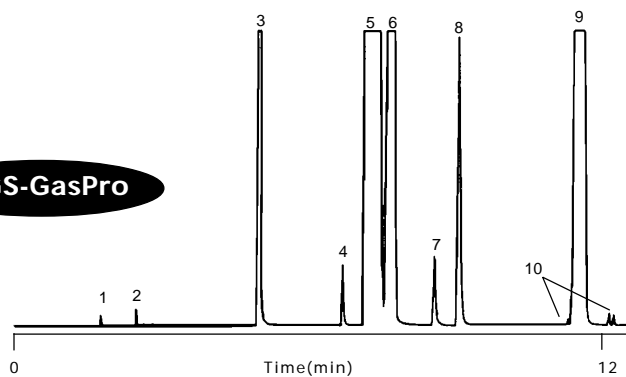
## MAPP® Gas. Comparison of GS-GasPro and Al<sub>2</sub>O<sub>3</sub>/KCl PLOT Columns



**Column:** GS-GasPro  
30 m x 0.32 mm I.D.  
**J&W P/N:** 113-4332  
**Carrier:** Nitrogen at 29 cm/sec  
**Oven:** 40°C for 2 min  
40 - 200°C at 10°/min  
**Injector:** 100 µL  
**Detector:** FID

1. Methane
2. Ethane
3. Propane
4. Cyclopropane
5. Propylene
6. Propadiene
7. Isobutane
8. Butane
9. Methyl acetylene
10. C<sub>4</sub> Isomers

### A. GS-GasPro



**Column:** Al<sub>2</sub>O<sub>3</sub>/KCl  
50 m x 0.53 mm I.D.  
**Carrier:** Nitrogen at 29 cm/sec  
**Oven:** 40°C for 3 min  
40 - 200°C at 10°/min  
**Injector:** 50 µL  
**Detector:** FID

### B. Al<sub>2</sub>O<sub>3</sub>/KCl

