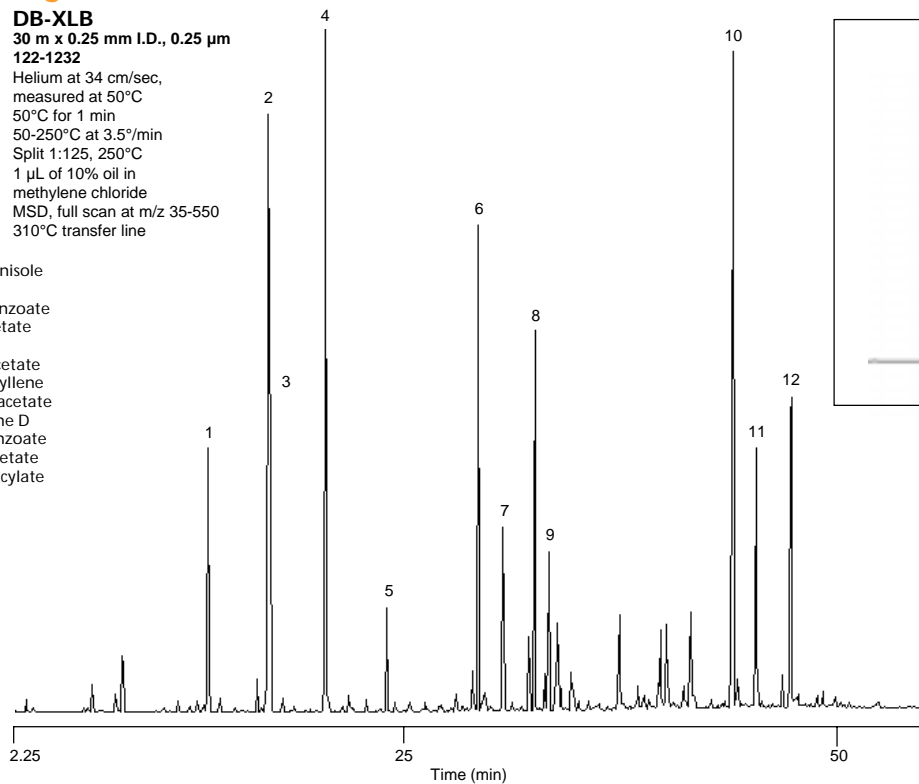


Ylang Ylang Oil

Column: DB-XLB
30 m x 0.25 mm I.D., 0.25 μ m
J&W P/N: 122-1232
Carrier: Helium at 34 cm/sec,
measured at 50°C
Oven: 50°C for 1 min
50-250°C at 3.5°/min
Injector: Split 1:125, 250°C
1 μ L of 10% oil in
methylene chloride
Detector: MSD, full scan at m/z 35-550
310°C transfer line

1. *p*-Methylanisole
2. Linalool
3. Methyl benzoate
4. Benzyl acetate
5. Geraniol
6. Geranyl acetate
7. β -Caryophyllene
8. Cinnamyl acetate
9. Germacrene D
10. Benzyl benzoate
11. Fanesol acetate
12. Benzyl salicylate



C577

new
new