

## Purge and Trap of BTEX Standard using PID



**Column:** DB-TPH  
30 m x 0.45 mm I.D., 1.0  $\mu$ m

**J&W P/N:** 124-1632

**Carrier:** Helium at 67 cm/sec, measured at 40°C

**Oven:** 40°C for 2 min  
40-260°C at 12°/min

**Injector:** Purge and trap (O.I.A. 4560)  
J&W Low Volume Injector (LVI)

**Purge:** 15 min at 85°C

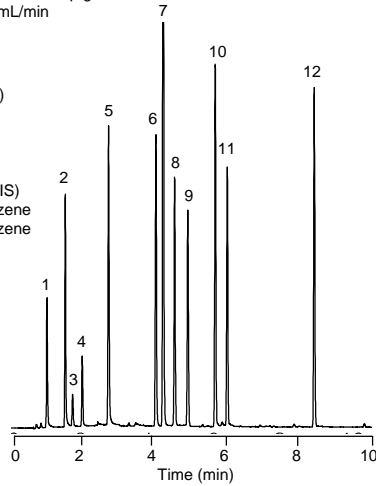
**Trap:** BTEX (Supelco) at 50°C during purge

**Desorb:** 2 min at 260°C

**Detector B:** PID, 200°C  
Nitrogen makeup gas  
at 30 mL/min

LVI featured  
on page 115

1. 2-Methylpentane
2. Benzene
3. Isooctane
4. Trifluorotoluene (IS)
5. Toluene
6. Ethylbenzene
7. *m,p*-Xylene
8. *o*-Xylene
9. Isopropylbenzene (IS)
10. 1,3,5-Trimethylbenzene
11. 1,2,4-Trimethylbenzene
12. Naphthalene



C547