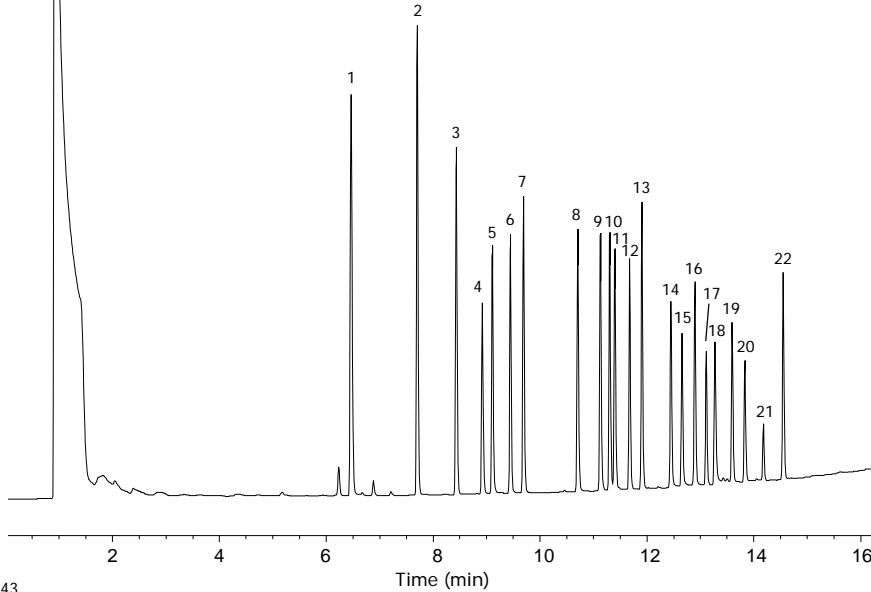


## Organochlorine Pesticides

**Column:** DB-35ms  
30 m x 0.25 mm I.D., 0.25 µm  
**J&W P/N:** 122-3832  
**Carrier:** Helium at 45 cm/sec, measured at 110°C  
**Oven:** 110°C for 0.5 min  
110-150°C at 25°/min  
150-260°C at 12°/min  
260-320°C at 15°/min  
320°C for 2 min

**Injector:** Splitless, 250°C  
30 sec purge activation time  
50 pg composite 8081 standard,  
and CLP-034 surrogate mix,  
Accustandard Inc.  
**Detector:** ECD, 350°C  
Nitrogen makeup gas at 40 mL/min



1. Tetrachloro-m-xylene (SS)
2.  $\alpha$ -BHC
3.  $\gamma$ -BHC
4.  $\beta$ -BHC
5. Heptachlor
6.  $\delta$ -BHC
7. Aldrin
8. Heptachlor epoxide
9.  $\gamma$ -Chlordane
10.  $\alpha$ -Chlordane
11. Endosulfan I
12. 4,4'-DDE
13. Dieldrin
14. Endrin
15. 4,4'-DDD
16. Endosulfan II
17. 4,4'-DDT
18. Endrin aldehyde
19. Endosulfan sulfate
20. Dibutylchlorodate (SS)
21. Methoxychlor
22. Endrin ketone

SS - Surrogate Standard