

## Methyl tert-butyl Ether (MTBE) FID, Extended 8020 Analysis

**Column:** DB-MTBE  
30 m x 0.45 mm I.D., 2.55  $\mu$ m

**J&W P/N:** 124-0034

**Carrier:** Helium at 10 mL/min

**Oven:** 35°C for 4 min

35-200°C at 20°/min

200°C for 5 min

**Injector:** Purge and trap (O.I.A. 4560)

J&W LVI

(Low Volume Injector), 150°C

40 ppb per component in

5 mL water

**Trap:** Tenax only

**Preheat:** 175°C

**Desorb:** 180°C for 3 min

**Detector:** FID (O.I.A. 4410), 200°C

15. 1,3,5-Trimethylbenzene

16. 1,2,4-Trimethylbenzene

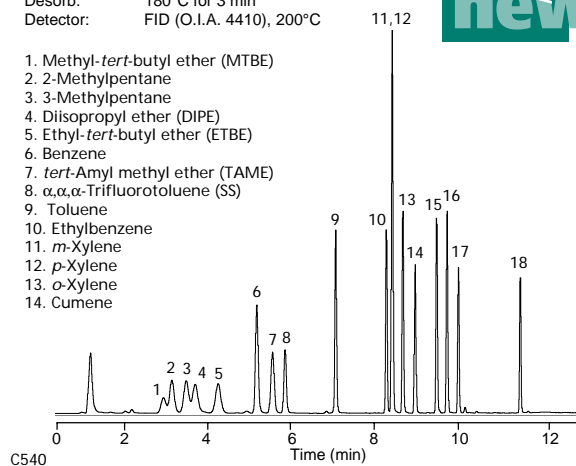
17. 1,2,3-Trimethylbenzene

18. Naphthalene

SS - Surrogate Standard



1. Methyl-*tert*-butyl ether (MTBE)
2. 2-Methylpentane
3. 3-Methylpentane
4. Diisopropyl ether (DIPE)
5. Ethyl-*tert*-butyl ether (ETBE)
6. Benzene
7. *tert*-Amyl methyl ether (TAME)
8.  $\alpha,\alpha,\alpha$ -Trifluorotoluene (SS)
9. Toluene
10. Ethylbenzene
11. *m*-Xylene
12. *p*-Xylene
13. *o*-Xylene
14. Cumene



C540