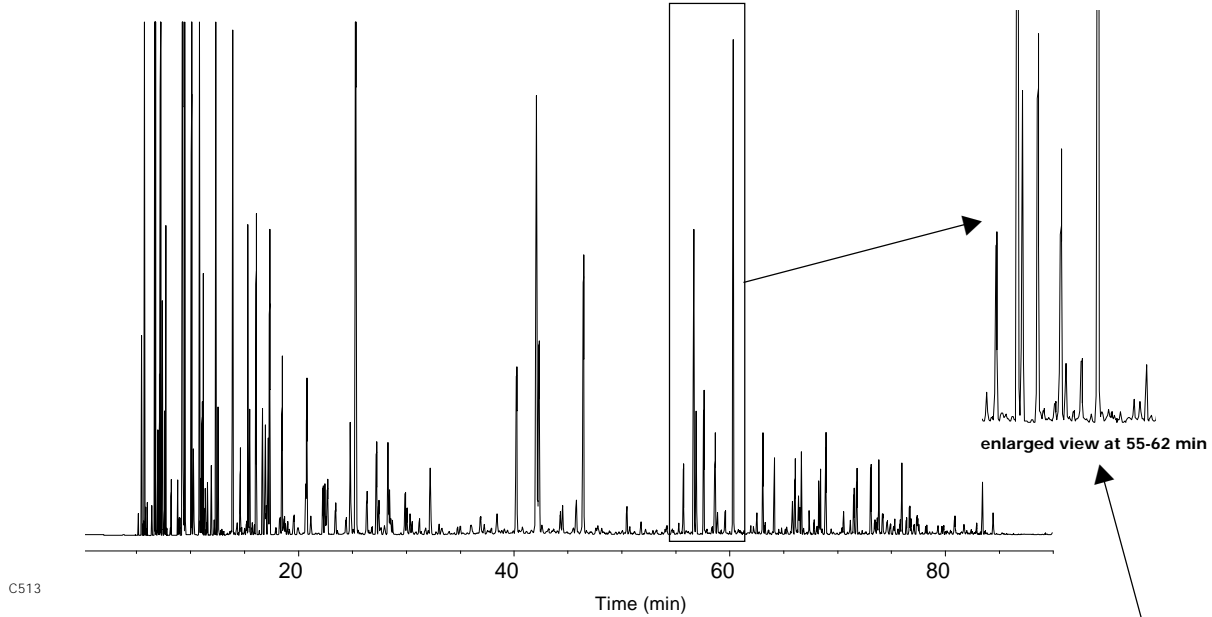


Regular Unleaded Gasoline (California Phase 1)-"Normal" GC Run

Column: DB-Petro100
100 m x 0.25 mm I.D., 0.5 µm
J&W P/N: 122-10A6
Carrier: Hydrogen at 31 cm/sec

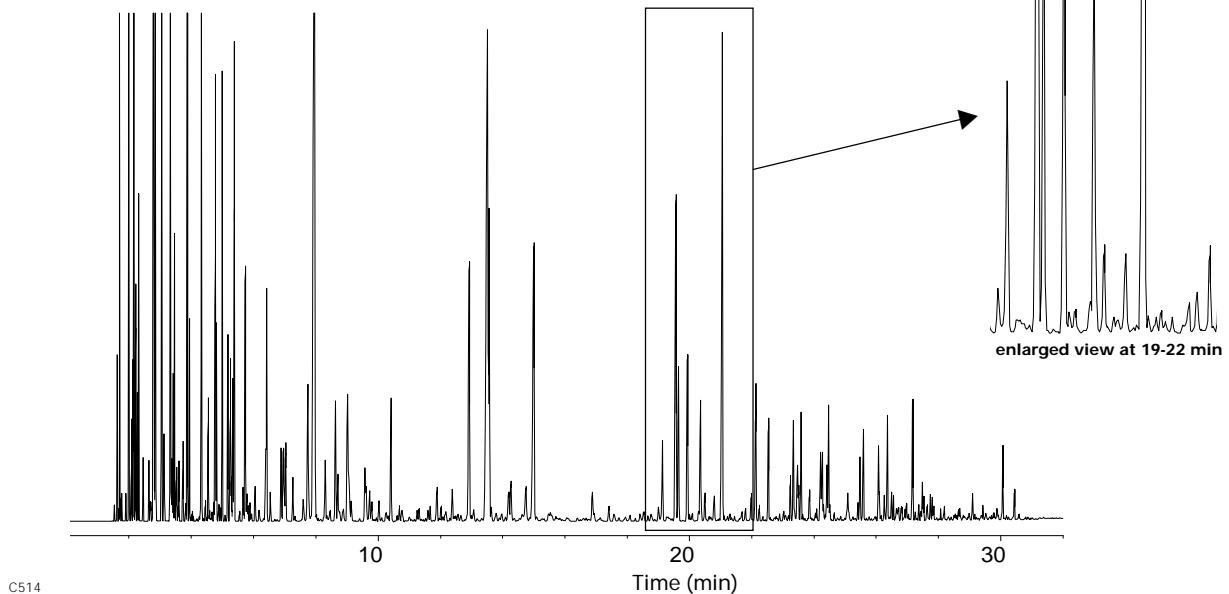
Oven: 35°C for 9.5 min
35-45°C at 13.3°/min
45°C for 11 min
45-60°C at 1.4°/min
60°C for 11 min
60-220°C at 2.7°/min
220°C for 3.6 min
Injector: Split 1:200, 0.2 µL
Detector: FID, 300°C



Regular Unleaded Gasoline (California Phase 1)-"Fast" GC Run

Column: DB-1
40 m x 0.10 mm I.D., 0.2 µm
J&W P/N: 127-1046
Carrier: Hydrogen at 34.8 cm/sec

Oven: 35°C for 3.6 min
35-45°C at 36.1°/min
45°C for 4.2 min
45-60°C at 3.9°/min
60°C for 4.2 min
60-220°C at 6.9°/min
220°C for 1.4 min
Injector: Split 1:400, 0.2 µL
Detector: FID, 300°C



Compare Resolution