

Rosemary Oil

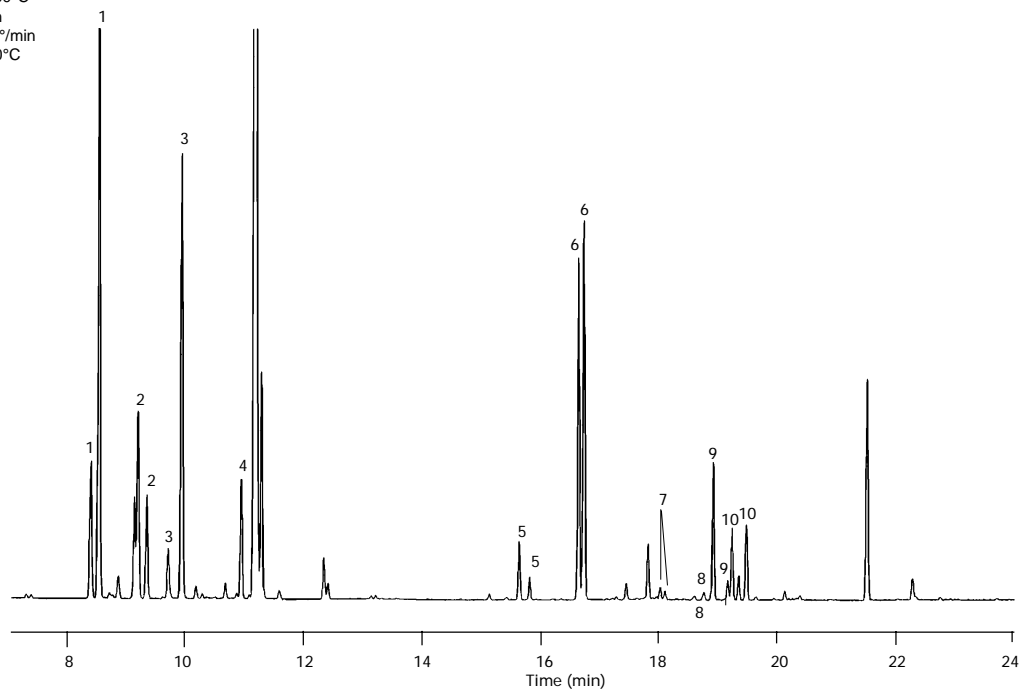
Column: **CycloSil-B**
30 m x 0.25 mm I.D., 0.25 μ m

J&W P/N: 122-6632
Carrier: Hydrogen at 40 cm/sec,
measured at 60°C

Oven: 55°C for 1 min
55-180°C at 5°/min

Injector: Split 50:1, 250°C
Detector: FID, 340°C

1. (+/-) α -Pinene
2. (+/-) Camphene
3. (+/-) β -Pinene
4. (+/-) Limonene
5. (+/-) Linalool
6. (+/-) Camphor
7. (+/-) Terpinene-4-ol
8. (+/-) Isoborneol
9. (+/-) Borneol
10. (+/-) α -Terpineol



C509