

**Extended Analyte List for EPA Method 8021
DB-624/VRX Dual Column**

**LVI featured on page 115
Method 8021 standards are found on page 143**

Columns: **DB-624**
75 m x 0.45 mm I.D., 2.55 µm
DB-VRX
75 m x 0.45 mm I.D., 2.55 µm
Guard column: 5 m x 0.53 mm I.D. deactivated fused silica
3-way universal glass union

J&W P/N: 009-1513
Carrier: Helium at 9 mL/min, measured at 35°C
Oven: 35°C for 12 min
35-60°C at 5°/min
60°C for 1 min
60-200°C at 17°/min
200°C for 5 min

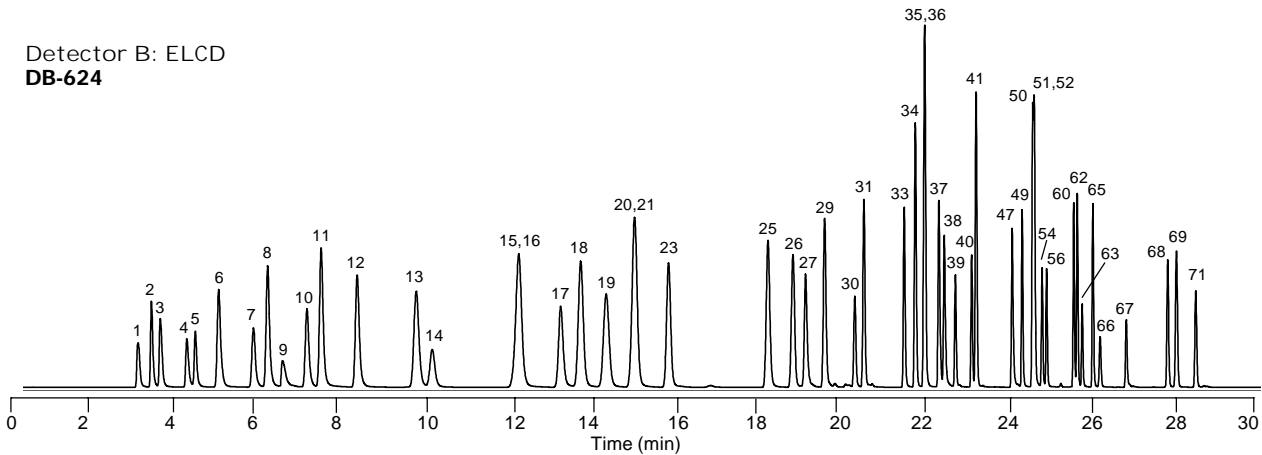
Injector: Purge and trap (O.I.A. 4560)
J&W LVI (Low Volume Injector), 150°C
20 ppb per component in 5 mL water

Trap: VOCARB™3000
Preheat: 175°C
Desorb: 260°C for 1 min
Detector A: PID (O.I.A. 4430), 200°C
Helium makeup gas at 20 mL/min
Detector B: ELCD (O.I.A. 4420), with NiCat™ reaction tube
in the halogen mode, 950°C reactor temperature

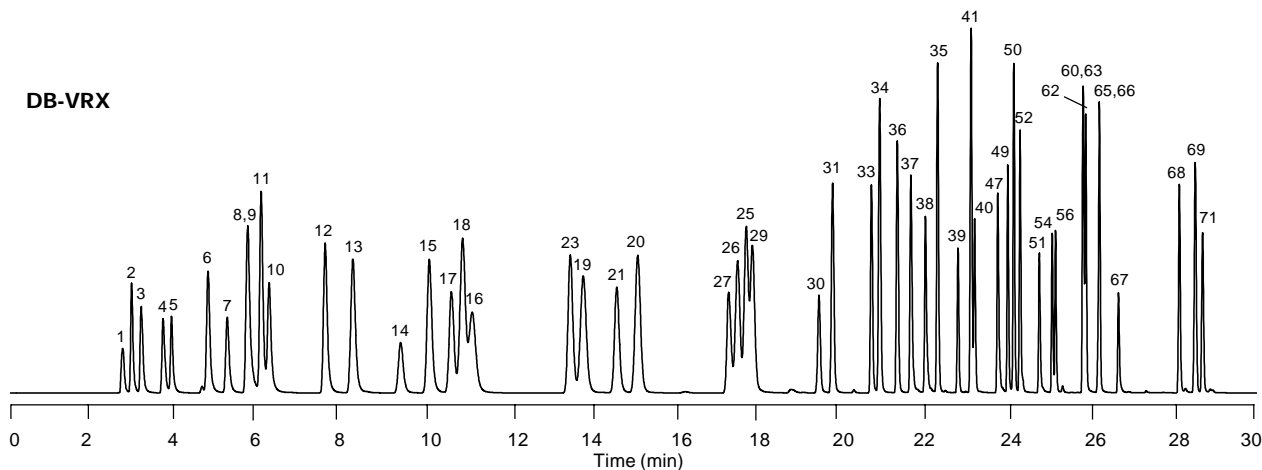
Compound list for all chromatograms

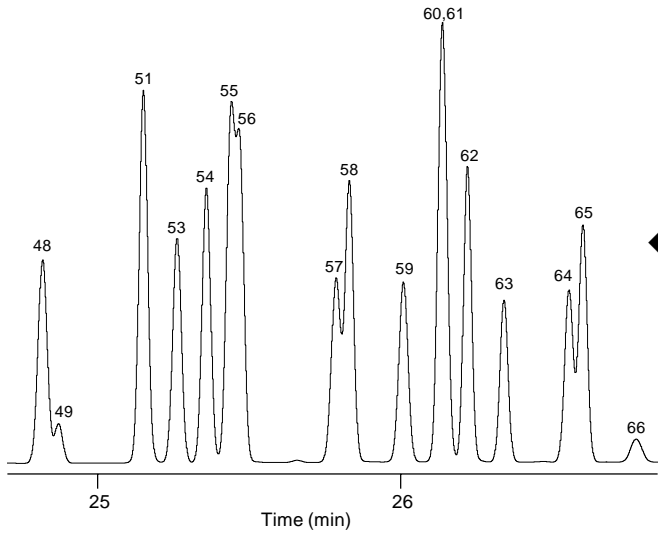
- | | | |
|----------------------------|---------------------------------------|--|
| 1. Dichlorodifluoromethane | 8. 1,1-Dichloroethene | 40. Chlorobenzene |
| 2. Chloromethane | 9. Iodomethane | 41. 1,1,1,2-Tetrachloroethane |
| 3. Vinyl chloride | 10. Allyl chloride | 42. Ethylbenzene |
| 4. Bromomethane | 11. Methylene chloride | 43. m-Xylene |
| 5. Chloroethane | 12. <i>trans</i> -1,2-Dichloroethene | 44. <i>p</i> -Xylene |
| 6. Trichlorofluoromethane | 13. 1,1-Dichloroethane | 45. Styrene |
| 7. 2-Chloropropane (IS) | 14. Chloroprene | 46. <i>o</i> -Xylene |
| | 15. <i>cis</i> -1,2-Dichloroethene | 47. Bromoform |
| | 16. 2,2-Dichloropropane | 48. Isopropylbenzene |
| | 17. Bromochloromethane | 49. <i>cis</i> -1,4-Dichlorobutene |
| | 18. Chloroform | 50. 1,1,2,2-Tetrachloroethane |
| | 19. 1,1,1-Trichloroethane | 51. Bromobenzene |
| | 20. Carbon tetrachloride | 52. 1,2,3-Trichloropropane |
| | 21. 1,1-Dichloropropene | 53. <i>n</i> -Propylbenzene |
| | 22. Benzene | 54. 2-Chlorotoluene |
| | 23. 1,2-Dichloroethane | 55. 1,3,5-Trimethylbenzene |
| | 24. Fluorobenzene (IS) | 56. 4-Chlorotoluene |
| | 25. Trichloroethene | 57. <i>tert</i> -Butylbenzene |
| | 26. 1,2-Dichloropropane | 58. 1,2,4-Trimethylbenzene |
| | 27. Dibromomethane | 59. <i>sec</i> -Butylbenzene |
| | 28. Trifluorotoluene (IS) | 60. 1,3-Dichlorobenzene |
| | 29. Bromodichloromethane | 61. <i>p</i> -Isopropyltoluene |
| | 30. 2-Chloroethyl vinyl ether | 62. 1,4-Dichlorobenzene |
| | 31. <i>cis</i> -1,3-Dichloropropene | 63. Benzyl chloride |
| | 32. Toluene | 64. <i>n</i> -Butylbenzene |
| | 33. <i>trans</i> -1,3-Dichloropropene | 65. 1,2-Dichlorobenzene |
| | 34. 1,1,2-Trichloroethane | 66. <i>bis</i> (2-Chloroisopropyl) ether |
| | 35. Tetrachloroethene | 67. 1,2-Dibromo-3-chloropropane |
| | 36. 1,3-Dichloropropane | 68. 1,2,4-Trichlorobenzene |
| | 37. Dibromochloromethane | 69. Hexachlorobutadiene |
| | 38. 1,2-Dibromoethane | 70. Naphthalene |
| | 39. 1-Chloro-3-fluorobenzene (IS) | 71. 1,2,3-Trichlorobenzene |

Detector B: ELCD
DB-624

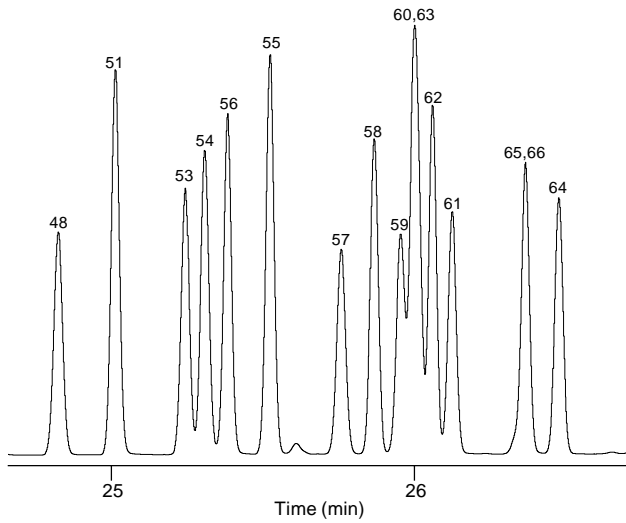
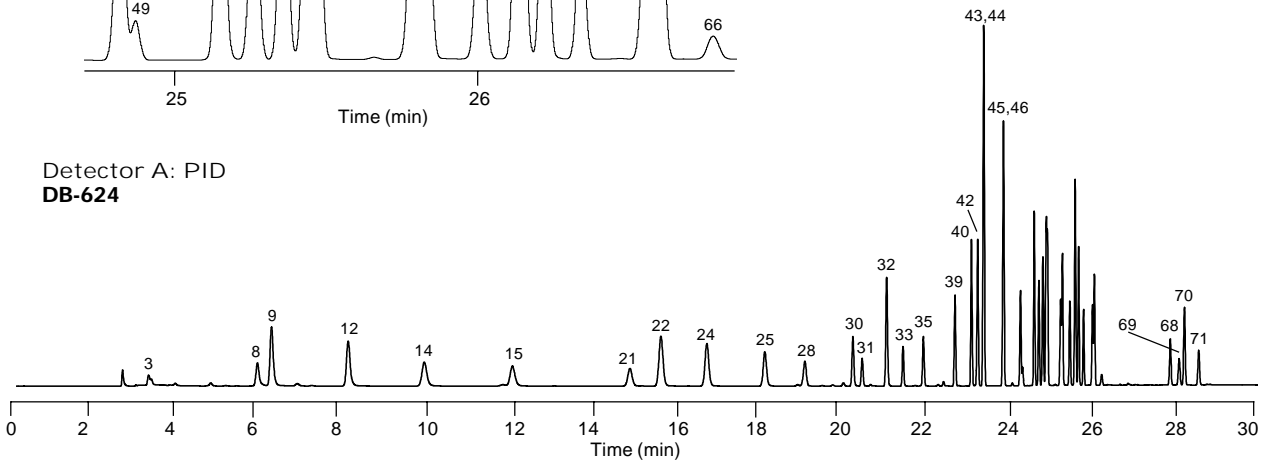


DB-VRX





Detector A: PID
DB-624



DB-VRX

