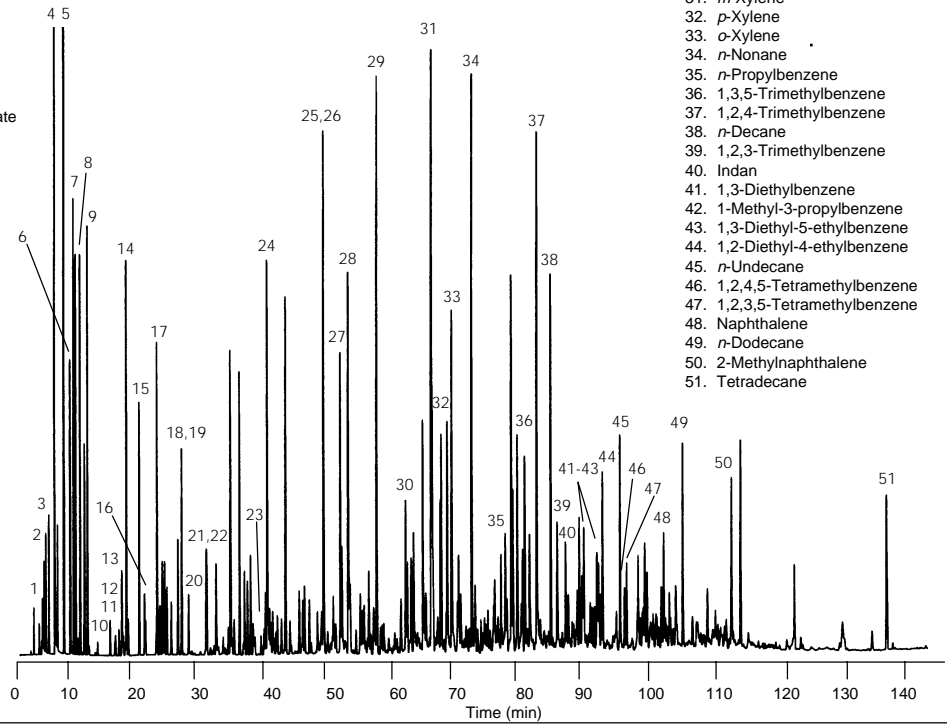


PONA Mix as Specified by AFNOR Method #2

Column: DB-Petro50
 50 m x 0.20 mm I.D., 0.5 μm
J&W P/N: 128-1056
 Carrier: Helium at 16.7 cm/sec,
 measured at 35°C
 Oven: 10°C for 15 min
 10-70°C at 1.3°/min
 70-250°C at 1.7°/min
 Injector: Split 1:200, 250°C
 0.3 μL petroleum reformat
 Detector: FID, 250°C
 Nitrogen makeup gas
 at 30 mL/min

1. Ethane
2. Propane
3. *n*-Butane
4. Ethanol
5. Isopentane
6. 1-Pentene
7. 2-Methyl-1-butene
8. *n*-Pentane
9. 2-Methyl-2-butene
10. 2,2-Dimethylbutane
11. 1-Cyclopentane
12. Cyclopentane
13. 2,3-Dimethylbutane
14. 2-Methylpentane
15. 3-Methylpentane
16. 2-Methyl-1-pentene
17. *n*-Hexane
18. 2,2-Dimethylpentane
19. Methylcyclopentane
20. 2,4-Dimethylpentane
21. Benzene
22. 1-Methyl-1-cyclopentane
23. Isooctane
24. *n*-Heptane
25. Toluene

26. 2,3,3-Trimethylpentane
27. 2-Methylheptane
28. 3-Methylheptane
29. *n*-Octane
30. Ethylbenzene
31. *m*-Xylene
32. *p*-Xylene
33. *o*-Xylene
34. *n*-Nonane
35. *n*-Propylbenzene
36. 1,3,5-Trimethylbenzene
37. 1,2,4-Trimethylbenzene
38. *n*-Decane
39. 1,2,3-Trimethylbenzene
40. Indan
41. 1,3-Diethylbenzene
42. 1-Methyl-3-propylbenzene
43. 1,3-Diethyl-5-ethylbenzene
44. 1,2-Diethyl-4-ethylbenzene
45. *n*-Undecane
46. 1,2,4,5-Tetramethylbenzene
47. 1,2,3,5-Tetramethylbenzene
48. Naphthalene
49. *n*-Dodecane
50. 2-Methylnaphthalene
51. Tetradecane



C421