

Fragrance Reference Standard

Conditions and compound list for all chromatograms:

Column: DB-WAX
30 m x 0.25 mm I.D., 0.25 µm

J&W P/N: 122-7032

Carrier: Helium at 25 cm/sec,
measured at 150°C

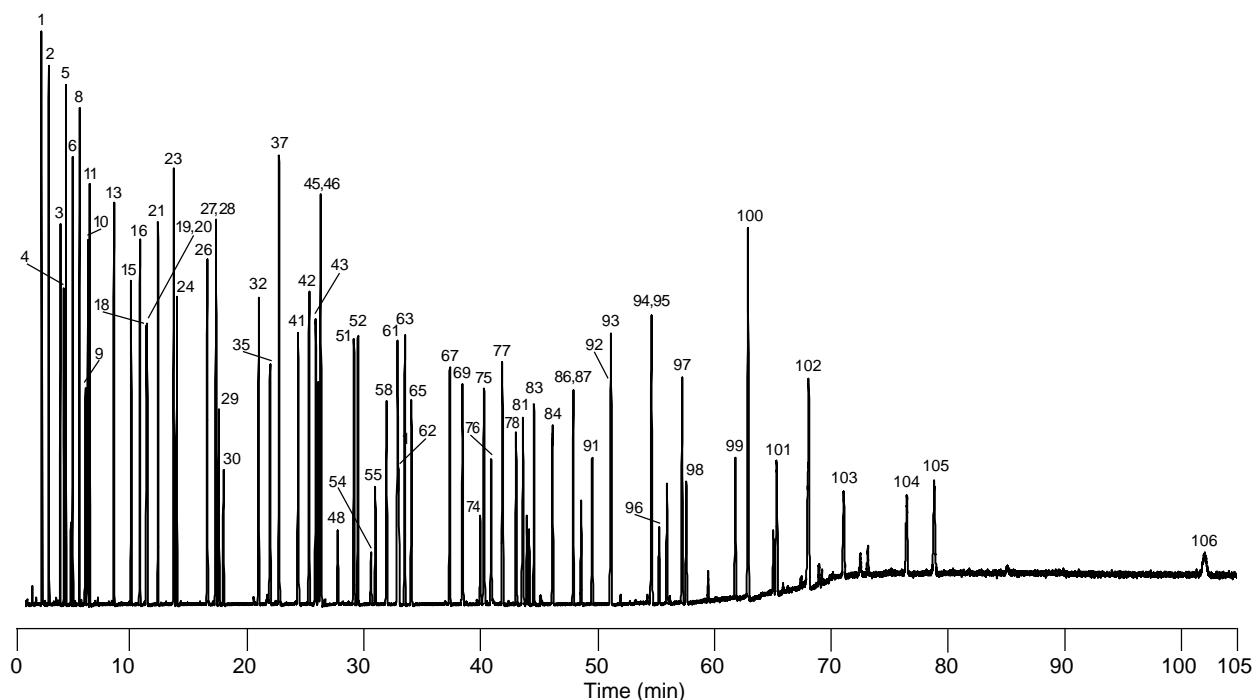
Oven: 45°C for 2 min
45-250°C at 3°/min
250°C for 34 min

Injector: Split 1:50, 250°C
1 µL of a 1:20 dilution
of neat sample in acetone

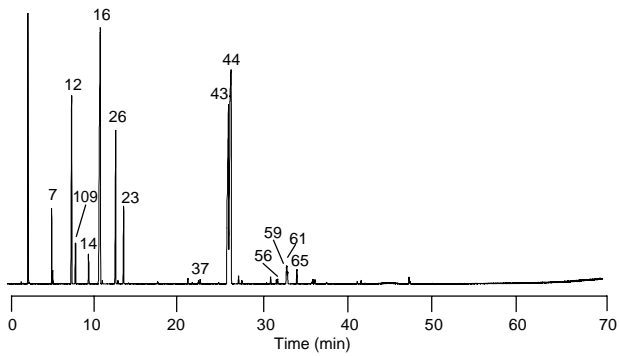
Detector: MSD, 250°C transfer line

Many thanks to Carl Frey, Manager of Analytical Services, Dragoco, and Kevin Myung, Director of Flavor and Perfumery Research, Bush Boake Allen, Inc. for contributing to this work.

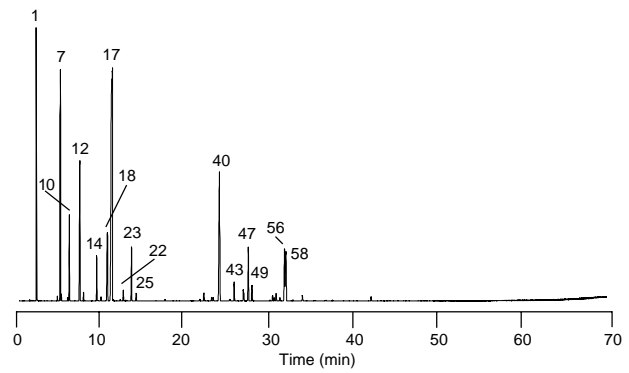
- | | | |
|----------------------------------------|--------------------------|-----------------------------------|
| 1. Acetone | 40. Camphor | 79. Citronellyl tiglate |
| 2. Ethyl acetate | 41. Benzaldehyde | 80. Eugenyl methyl ether |
| 3. Ethyl propionate | 42. Ethyl nonanoate | 81. γ-Nonalactone |
| 4. 2,3-Butanedione (diacetyl) | 43. Linalool | 83. Ethyl tetradecanoate |
| 5. Methyl butyrate | 44. Linalyl acetate | 84. n-Amyl salicylate |
| 6. Isobutyl acetate | 45. Vertenex (isomer 1) | 85. Geranyl tiglate |
| 7. α-Pinene | 46. Octanol | 86. Ethyl pentadecanoate |
| 8. Ethyl butyrate | 47. β-Caryophyllene | 87. Isopropylmyristate |
| 9. 2,3-Pentanedione (acetyl propionyl) | 48. Vertenex (isomer 2) | 90. Phenylethyl tiglate |
| 10. Camphene | 49. Terpinen-4-ol | 91. Rosatol (rosetone) |
| 11. Ethyl isovalerate | 50. Methyl benzoate | 92. Eugenyl acetate |
| 12. β-Pinene | 51. Hexylene glycol | 93. Ethyl hexadecanoate |
| 13. Ethyl pentanoate | 52. Ethyl decanoate | 94. γ-Dodecalactone |
| 14. Myrcene | 53. Citronellyl acetate | 95. Dibenzyl ether |
| 15. Allyl butyrate | 54. Isoborneol | 96. Tonalid |
| 16. Limonene | 55. Neral | 97. Ethyl octadecanoate |
| 17. 1,8-Cineol | 56. α-Terpineol | 98. Benzophenone |
| 18. 3,5,5-Trimethylhexanol | 57. Geranyl formate | 99. Benzyl benzoate |
| 19. 3-Methylbutyl alcohol | 58. Borneol | 100. Cetearyl octanoate |
| 20. 2-Methylbutyl alcohol | 59. β-Bisabolene | 101. Musk T (ethylene brassylate) |
| 21. Ethyl hexanoate | 60. Benzyl acetate | 102. Cetearyl decanoate |
| 22. γ-Terpinene | 61. Neryl acetate | 103. Frambione (raspberry ketone) |
| 23. p-Cymene | 62. Geranial | 104. Cinnamyl phenyl acetate |
| 24. Hexyl acetate | 63. Ethyl undecanoate | 105. Phenyl ethyl cinnamate |
| 25. Terpinolene | 64. δ-Cadinene | 106. Cinnamyl cinnamate |
| 26. Ethyl heptanoate | 65. Geranyl acetate | 107. Benzyl salicylate |
| 27. 2,6-Dimethylhept-5-enal (Melonal™) | 66. Citronellol | 108. Heneicosane |
| 28. Rose oxide, cis-rose | 67. Ethyl dodecanoate | 109. Sabinene |
| 29. Hexanol | 68. Geraniol | 110. Citronellyl formate |
| 30. Rose oxide, trans-rose | 69. Benzyl alcohol | |
| 31. Methyl-para-cresol | 70. Geranyl butyrate | |
| 32. Ethyl octanoate | 71. Nonadecane | |
| 33. cis-Linalool oxide | 72. Benzene ethanol | |
| 34. Menthone | 73. Nonadec-1-ene | |
| 35. Furfural | 74. Florazone (isomer 1) | |
| 36. trans-Linalool oxide | 75. Florazone (isomer 2) | |
| 37. Octyl acetate | 76. Hydroxycitronellal | |
| 38. Isomenthone | 77. Dodecanol | |
| 39. α-Copaene | 78. Diphenyl oxide | |



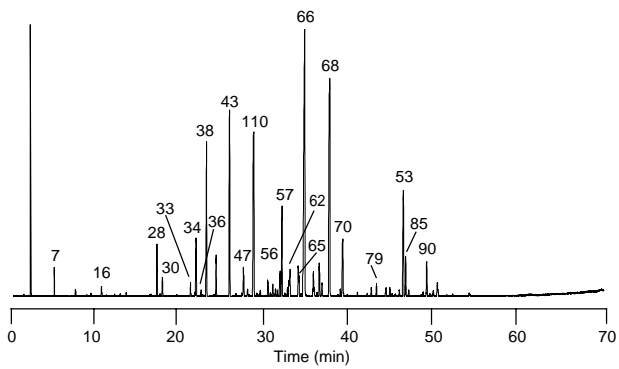
Bergamot Oil



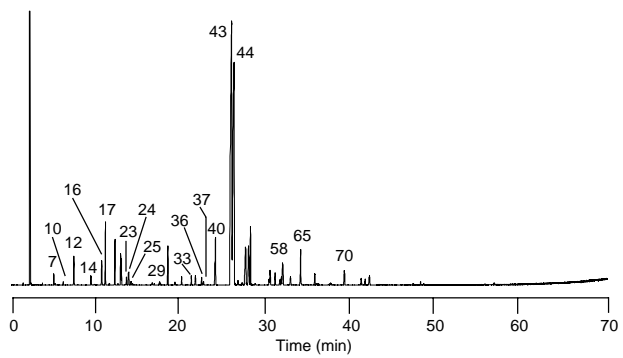
Rosemary Oil



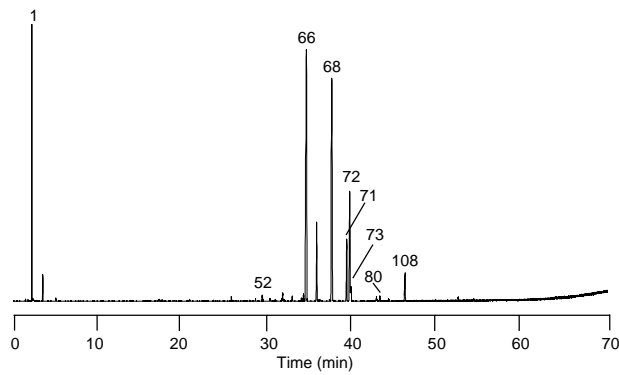
Geranium Oil



Lavender Oil



Rose Oil



Ylang Ylang Oil

