

## Purgeables Analysis Without Cryofocusing (EPA Method 502.2)

**Column:** DB-502.2

105 m x 0.53 mm I.D., 3.0 µm

**J&W P/N:** 125-14A4

**Carrier:** Helium at 10 mL/min, measured at 35°C

**Oven:** 35°C for 10 min  
35-200°C at 4°/min  
200°C for 5 min

**Injector:** Purge and trap (O.I.A. 4560)

40 ppb per component in 5 mL water

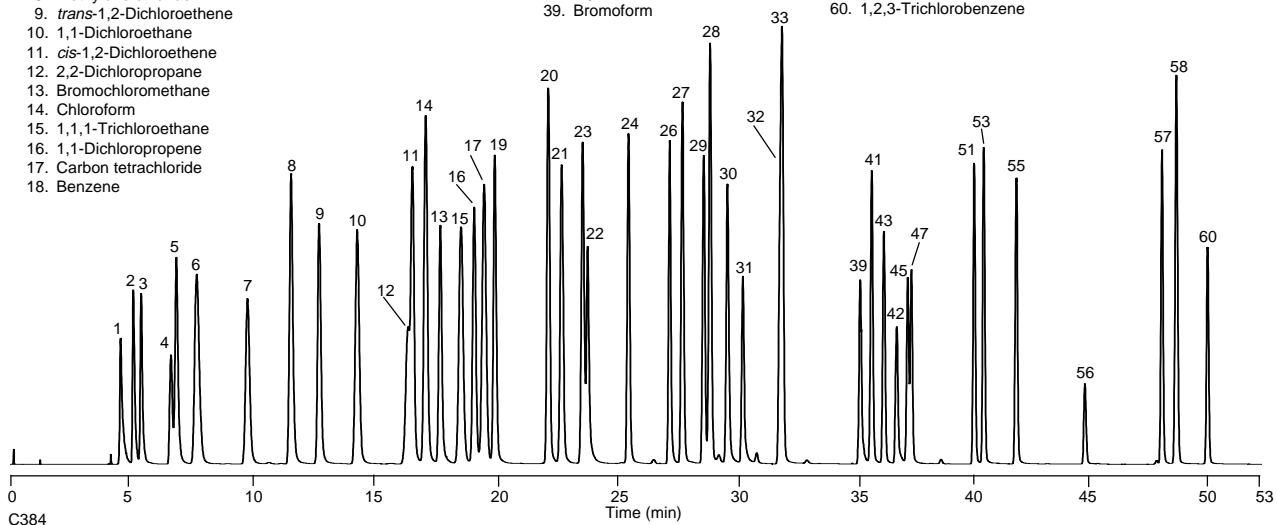
**Trap:** Tenax/Silica Gel/Charcoal

**Detector:** ELCD (O.I.A. 4420), with NiCatreaction tube in the halogen mode, 950°C reactor temperature.

1. Dichlorodifluoromethane
2. Chloromethane
3. Vinyl chloride
4. Bromomethane
5. Chloroethane
6. Trichlorofluoromethane
7. 1,1-Dichloroethene
8. Methylene chloride
9. *trans*-1,2-Dichloroethene
10. 1,1-Dichloroethane
11. *cis*-1,2-Dichloroethene
12. 2,2-Dichloropropane
13. Bromochloromethane
14. Chloroform
15. 1,1,1-Trichloroethane
16. 1,1-Dichloropropene
17. Carbon tetrachloride
18. Benzene

19. 1,2-Dichloroethane
20. Trichloroethene
21. 1,2-Dichloropropane
22. Dibromomethane
23. Bromodichloromethane
24. *cis*-1,3-Dichloropropene
25. Toluene
26. *trans*-1,3-Dichloropropene
27. 1,1,2-Trichloroethane
28. Tetrachloroethene
29. 1,3-Dichloropropane
30. Dibromochloromethane
31. 1,2-Dibromoethane
32. Chlorobenzene
33. 1,1,1,2-Tetrachloroethane
34. Ethylbenzene
35. *m*-Xylene
36. *p*-Xylene
37. *o*-Xylene
38. Styrene
39. Bromoform

40. Isopropylbenzene
41. 1,1,2,2-Tetrachloroethane
42. Bromobenzene
43. 1,2,3-Trichloropropane
44. *n*-Propylbenzene
45. 2-Chlorotoluene
46. 1,3,5-Trimethylbenzene
47. 4-Chlorotoluene
48. *tert*-Butylbenzene
49. 1,2,4-Trimethylbenzene
50. *sec*-Butylbenzene
51. 1,3-Dichlorobenzene
52. *p*-Isopropyltoluene
53. 1,4-Dichlorobenzene
54. *n*-Butylbenzene
55. 1,2-Dichlorobenzene
56. 1,2-Dibromo-3-chloropropane
57. 1,2,4-Trichlorobenzene
58. Hexachlorobutadiene
59. Naphthalene
60. 1,2,3-Trichlorobenzene



**Column:** DB-502.2

75 m x 0.45 mm I.D., 2.55 µm

**J&W P/N:** 124-1474

**Carrier:** Helium at 9 mL/min, measured at 35°C

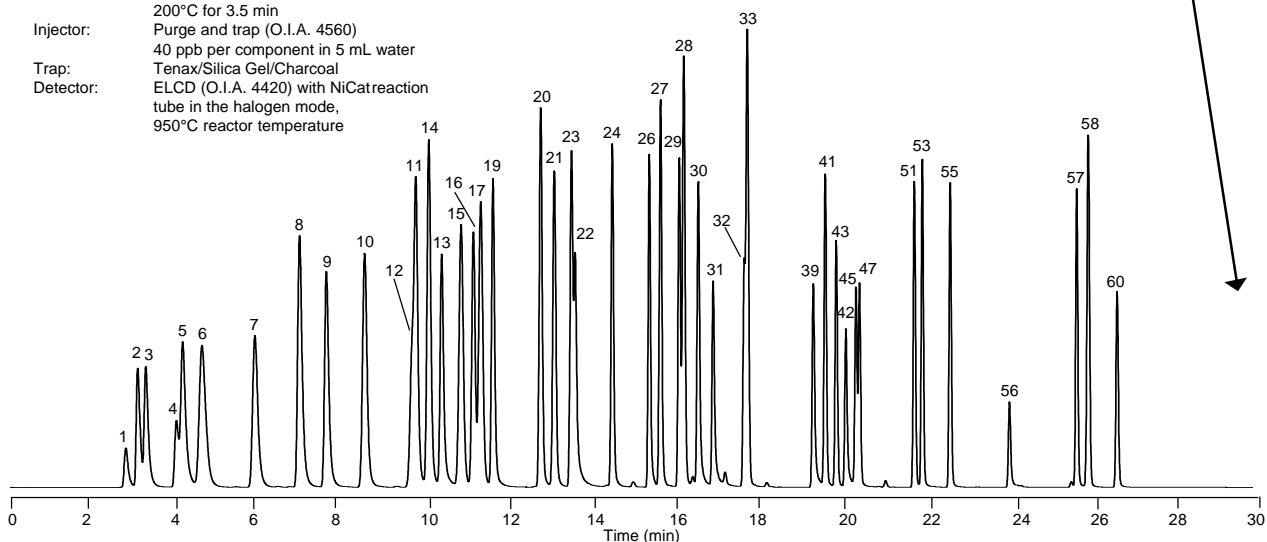
**Oven:** 35°C for 6 min  
35-200°C at 8°/min  
200°C for 3.5 min

**Injector:** Purge and trap (O.I.A. 4560)

40 ppb per component in 5 mL water

**Trap:** Tenax/Silica Gel/Charcoal

**Detector:** ELCD (O.I.A. 4420) with NiCatreaction tube in the halogen mode, 950°C reactor temperature



High Speed Megabare  
Saves 23 Minutes!