

## EPA Method 504 by GC/MS

### Column: DB-VRX

30 m x 0.25 mm I.D., 1.4  $\mu$ m

J&W P/N: 122-1534

Oven: 40°C for 0.5 min

40-200°C at 10°/min

Injector: Splitless, 200°C

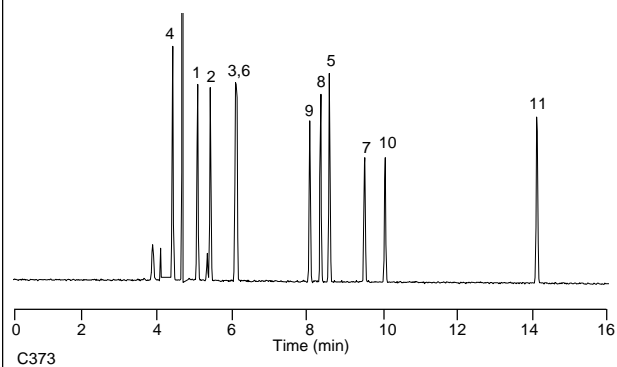
12 sec purge activation time

25 pg on-column of each component

Detector: MSD, 220°C transfer line, SIM

1. 1,1,1-Trichloroethane
2. Carbon tetrachloride
3. Trichloroethene
4. Chloroform
5. Tetrachloroethene
6. Bromodichloromethane
7. 1,2-Dibromopropane
8. 1,2-Dibromoethane (EDB)
9. Dibromochloromethane
10. Bromoform
11. 1,2-Dibromo-3-chloropropane (DBCP)

Method 504 standards are  
found on pages 131



C373