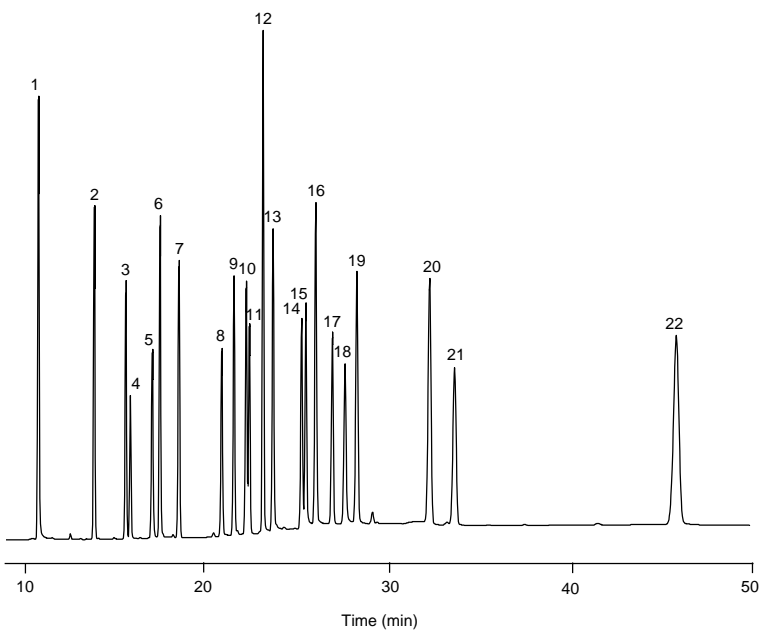
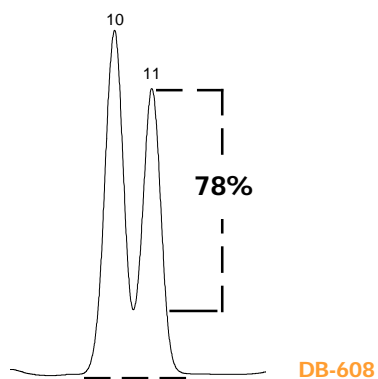


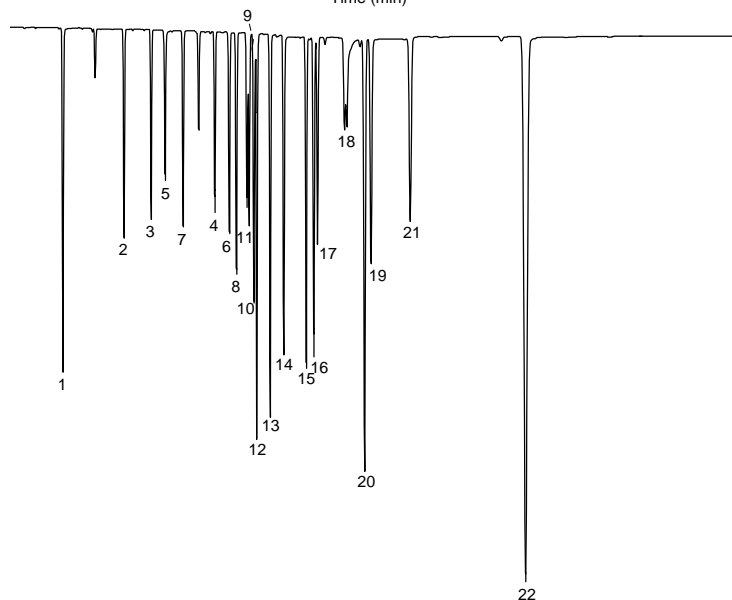
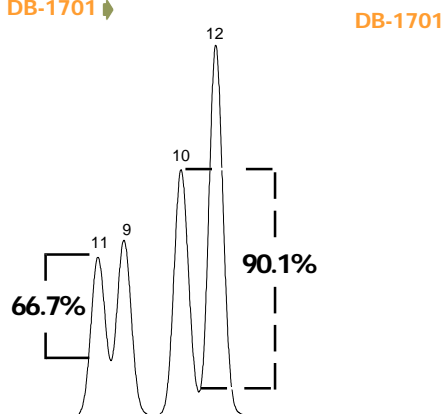
## Organochlorine Pesticides, DB-608/1701 Dual Column

**Column:** DB-608  
 30 m x 0.53 mm I.D., 0.83  $\mu$ m  
**J&W P/N:** 125-1730  
**Column:** DB-1701  
 30 m x 0.53 mm I.D., 1.0  $\mu$ m  
**J&W P/N:** 125-0732  
**Guard Column:** 2 m x 0.53 mm I.D.  
**J&W P/N:** 160-2535  
**3-way union**  
**J&W P/N:** 705-0803  
**Carrier:** Helium at 28.2 cm/sec, measured at 150°C  
**Oven:** 150-275°C at 5°/min  
 275°C for 23 min  
**Injector:** Megabore Direct, 1.5  $\mu$ L  
**Detector:** ECD, 325°C  
 Nitrogen makeup gas at 30 mL/min

### Enlarged view of critical pair on DB-608



### Enlarged view of critical pairs on DB-1701



Compounds at 25-100 pg/ $\mu$ L per component

- |                              |                             |
|------------------------------|-----------------------------|
| 1. Tetrachloro-m-xylene (IS) | 12. <i>p,p'</i> -DDE        |
| 2. $\alpha$ -BHC             | 13. Dieldrin                |
| 3. $\gamma$ -BHC             | 14. Endrin                  |
| 4. $\beta$ -BHC              | 15. <i>p,p'</i> -DDD        |
| 5. Heptachlor                | 16. Endosulfan II           |
| 6. $\delta$ -BHC             | 17. <i>p,p'</i> -DDT        |
| 7. Aldrin                    | 18. Endrin aldehyde         |
| 8. Heptachlor epoxide        | 19. Endosulfan sulfate      |
| 9. $\gamma$ -Chlordane       | 20. Methoxychlor            |
| 10. $\alpha$ -Chlordane      | 21. Endrin ketone           |
| 11. Endosulfan I             | 22. Decachlorobiphenyl (IS) |