

PAHs

Column:

DB-35ms

30 m x 0.25 mm I.D., 0.25 µm

J&W P/N:

122-3832

Carrier:

Helium at 33.3 cm/sec, measured at 150°C

Oven:

100°C for 0.1 min
100-325°C at 5°/min
325°C for 15 min

Injector:

Splitless, 0.5 µL of a 20 ng/µL
of EPA 610 PAH standard

Detector:

Ion Trap MS, 325°C transfer line

Tune Temp:

225°C

Target Value:

30,000

Scan Range:

45-450 amu

Background Mass:

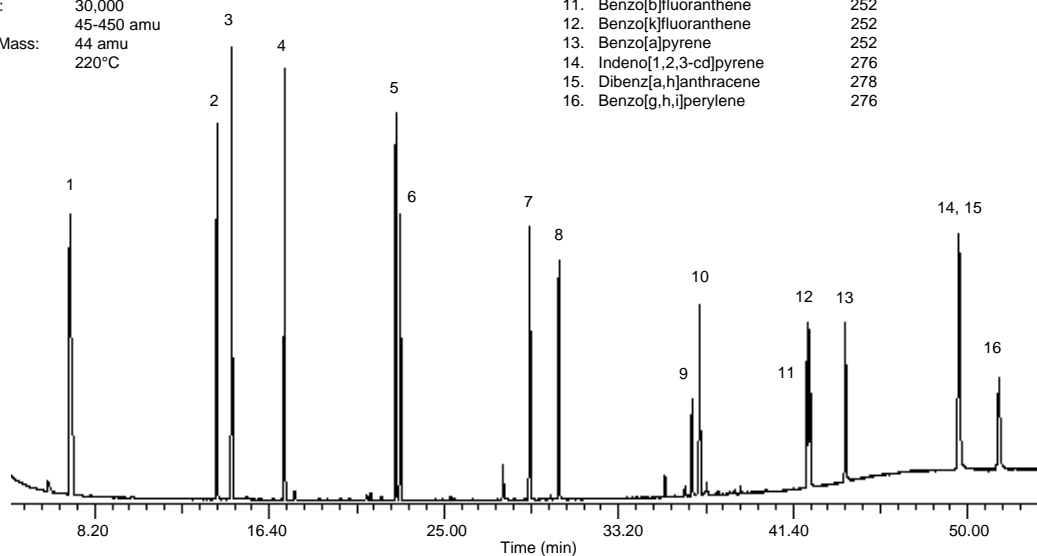
44 amu

Manifold:

220°C

Compound

| Compound | m/z |
|----------------------------|---------|
| 1. Naphthalene | 128 |
| 2. Acenaphthylene | 152 |
| 3. Acenaphthene | 154 |
| 4. Fluorene | 166,165 |
| 5. Phenanthrene | 178 |
| 6. Anthracene | 178 |
| 7. Fluoranthene | 202 |
| 8. Pyrene | 202 |
| 9. Benz[a]anthracene | 228 |
| 10. Chrysene | 228 |
| 11. Benzo[b]fluoranthene | 252 |
| 12. Benzo[k]fluoranthene | 252 |
| 13. Benzo[a]pyrene | 252 |
| 14. Indeno[1,2,3-cd]pyrene | 276 |
| 15. Dibenzo[a,h]anthracene | 278 |
| 16. Benzo[g,h,i]perylene | 276 |



C364