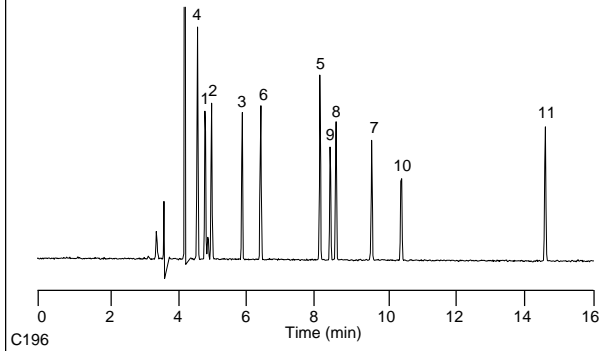


## EPA Method 504 by GC/MS

**Column:** DB-624  
30 m x 0.25 mm I.D., 1.4  $\mu$ m  
**J&W P/N:** 122-1334  
**Oven:** 40°C for 0.5 min  
40-200°C at 10°/min  
**Injector:** Splitless, 200°C  
12 sec purge activation time  
25 pg on-column of each component  
**Detector:** MSD, 220°C transfer line, SIM

- |                          |  |
|--------------------------|--|
| 1. 1,1,1-Trichloroethane | 6. Bromodichloromethane                |
| 2. Carbon tetrachloride  | 7. 1,2-Dibromopropane                  |
| 3. Trichloroethene       | 8. 1,2-Dibromoethane (EDB)             |
| 4. Chloroform            | 9. Dibromochloromethane                |
| 5. Tetrachloroethene     | 10. Bromoform                          |
|                          | 11. 1,2-Dibromo-3-chloropropane (DBCP) |



C196